



CONTENTS

05	FOREWORD	12	PRODUCT RANGE
07	TECHNOLOGY	57	ACCESSORIES
09	TUBULAR AND TUBULAR CLINCHER DESCRIPTION	60	TUFO AROUND THE WORLD
10	TUBELESS READY AND TUBE TYPE ROAD TYRES		
11	CLINCHER TYRE AND TUBELESS READY TYRE DESCRIPTION		



TECHNOLOGY YOU CAN FEEL WITH EVERY PEDAL PUSH

Cycling is constantly evolving: Bikes using advanced light materials get faster and trails become more challenging. Demands on bicycle tyres must keep up with the evolution. One thing still remains constant: contact with the surface – the key to safety, comfort and victory.

We are TUFO, a Czech brand with roots in performance cycling. Since 1991 we have been developing and manufacturing top-quality cycling tyres. From our humble beginnings in a garden shed to our modern production facilities in Zlín and Otrokovice, we have maintained our passion for cycling and our unwavering commitment to quality.

Our products aren't just the results of spreadsheets – they are made with hearth, experience and constant testing in real-world conditions. Laboratories, compound development, patented designs and direct feedback from professional and amateur cyclist worldwide – that's TUFO.

Whether you ride on asphalt, gravel or mud, we want you to be able to rely on TUFO. When the going gets tough, it's contact with the surface what makes the difference.

This catalogue showcases our full range of tyres, tubulars and accessories, proves that TUFO is a respected player on the global stage. Every product has been created with the highest standards of craftsmanship. Browse through our range and find exactly what you need. We look forward to level up your cycling skill set.



Nicolo Ferrazzo
#13

I've been using TUFO Tyres since the very first day I started riding gravel. My go-to tyres are the Thundero 44 HD, as they offer incredible versatility across all types of terrain. Whether it's loose gravel, muddy paths, or even some light singletrack, they provide great traction and durability. For faster races on hard-packed surfaces, I switch to the Speedero 40 tyres to enhance rolling efficiency and aerodynamics. These tyres allow me to maintain higher speeds while keeping control and stability.

TECHNOLOGY

CARBON BLACK TREAD COMPOUND

A durable tread compound that has proven its quality for years. This standard compound with a high content of Carbon black guarantees very good mileage for road tubulars, durability and puncture resistance in certain cyclo-cross tubulars and low weight for selected track tubulars.

SPC SILICA TREAD COMPOUND

We use this high performance road racing tread compound in the majority of our road tubulars and road tyres. With 66 Shore A hardness this well-balanced blend of synthetic and natural rubbers with Activated Silica filler provides tubulars with excellent wet grip and low rolling resistance.

NAN SILICA TREAD COMPOUND

This is an indoor wooden track specific compound for extra speed, grip and quick handling. Not suitable for wet conditions.

OIL SILICA TREAD COMPOUND

A soft compound (55 Shore A) developed for MTB cross country and marathon tubulars. Adding a reasonable amount of oil to a polymer blend with Activated Silica improves traction and reduces rolling resistance. Reasonable tread wear.

BIC SILICA TREAD COMPOUND

A compound for indoor sports on wooden or plastic floors. Used in Cycle-ball, Artistic cycling and wheelchairs sports tubulars for excellent traction and quick handling. Manufactured in many colours including black, this compound doesn't leave any colour marks on floors. Not suitable for wet conditions.

GRIP SILICA TREAD COMPOUND

Specially developed tread compound with nanostructure silica-treated rubber using advanced mixing technology. The main advantage of this compound is its adhesion. This mixture is further divided into other variants, each specially modified for different disciplines.

TUBELESS READY COMPOUND

Our standard TR mixture with nano blocks prevents gas permeability. The tubeless-ready tyre features an airtight rubber compound incorporated directly into the tyre carcass, which holds air pressure.

LIQUID RUBBER COMPOUND

Made with exceptional care using liquid rubber and nanostructured silica. This advanced carcass compound, with low hysteresis, is incorporated into Tufo's high-end road tyres.

LOW MODULUS COMPOUND

The low modulus combined with high tensile strength gives this compound excellent performance for road and track cycling.

PUNCTURE BARRIER VECTRAN™

The most durable material in our portfolio. A puncture barrier made from Vectran – a liquid crystal polymer (LCP) that is five times stronger than steel. It is the perfect protection against punctures, cuts and breakthroughs.

PUNCTURE BARRIER STANDARD

Our standard puncture barrier is made of an additional layer of rubberized carcass placed under the tread. It provides adequate protection along with good rolling resistance.

PUNCTURE BARRIER KEVLAR®

Based on our development, we add this Kevlar material to selected Tufo road models. Its excellent resistance to breakage, combined with a flexible structure, optimizes durability, comfort, handling, and rolling resistance.



Aramid beads developed for tubeless-ready tyres with focus on safety. The beads are specially treated to adhere and stay firmly fixed inside.



We implemented sidewall protection in our Gravel and XC range. A layer of nylon fabric on the sidewalls provides additional protection and stability at low pressures.



Before switching to TUFO tyres, I used various competitors' tyres, but I often suffered punctures and was unhappy with the handling. TUFO tyres have never let me down in a race and I know I can count on them 100%. I also use TUFO tyres for other bikes besides MTB. On the road, I can't get enough of the Endurance 7TR. When combined with a wide tubeless rim, it provides incredible comfort on our rutted roads and tremendous cornering grip. It makes me feel much more secure.

TUBULAR AND TUBULAR CLINCHER DESCRIPTION

The Construction of both types is essentially the same, consisting of closed tubular toroid. The difference is only in the installation of the tyre on the rim.

Tubular



Tubular Clincher



- 1 Separate inner tube
- 2 The carcass
- 3 Puncture barrier
- 4 Tread
- 5 Base tape
- 6 The bead profile (Tubular Clincher)
- 7 Protective rubber ply

TUBELESS READY AND TUBE TYPE ROAD TYRES

Tubeless Ready Tyres have an airtight rubber compound incorporated directly into the tyre carcass which holds the air pressure whereas conventional Clincher Tyres use a separate inner tube.

Tyre



Tubeless Tyre



- 1

Aramid beads - Tufo beads for tubeless ready tyres. Standard aramid beads for tube type tyres.
- 2

Bead protection
- 3

The carcass
- 4

Puncture barrier
- 5

Protective rubber ply
- 6

Tread
- 7

Inner tube

GRAVEL AND XC TUBELESS READY TYRE

Our GRAVEL and XC ranges consist of similar semi-finished product and constructions, with a few compound modifications for each, focusing mainly on good grip and rolling resistance.

Tubeless Tyre



Tubeless Tyre



- 1

Tufo aramid beads
- 2

Bead protection
- 3

Additional bead protection
- 4

The carcass
- 5

Puncture barrier
- 6

Sidewall protection
- 7

Tread

PRODUCT RANGE

/CLINCHER TYRES
/TUBELESS READY TYRES
/TUBULARS
/TUBULAR CLINCHERS



14

ROAD
CYCLING



30

TRACK
CYCLING



34

CYCLO-CROSS



38

WHEELCHAIR
SPORTS



42

GRAVEL



40

ARTISTIC CYCLING
CYCLE-BALL



48

MTB



56

ACCESSORIES



ROAD CYCLING



MATYÁŠ KOBLÍŽEK
European Junior Championships:
Madison European Champion
European Elimination Champion
World Junior Championship:
Madison 2.place
Elimination 2x 3.place

ROAD CYCLING

MATERIALS & TECHNOLOGY

CARBON BLACK
TREAD COMPOUND

PUNCTURE BARRIER
STANDARD

SPC SILICA
TREAD COMPOUND

GRIP SILICA
TREAD COMPOUND

TUBELESS READY
COMPOUND

LIQUID RUBBER
COMPOUND

PROTECTIVE
RUBBER PLY

PUNCTURE BARRIER
VECTRAN™



TUBELESS READY TYRES

	Size	Weight	Pressure	TPI Count Sidewall area / Under the tread	Colours
COMTURA PRIMA 25	25-622 700×25C	220 g	4–6.5 bar (60–95 p.s.i.)	210 / 375	
COMTURA PRIMA 28	28-622 700×28C	240 g	3.4 – 6.5 bar (45–95 p.s.i.)	210 / 375	
NEW COMTURA PRIMA 32	32-622 700×32C	260 g	2.5–5.5 bar (35–80 p.s.i.)	210 / 375	
NEW COMTURA PRIMA TT 28	28-622 700×28C	205 g	3–5.9 bar (45–85 p.s.i.)	400 / 665	
ENDURANCE 7TR 28	28-622 700×28C	295 g	3–6.5 bar (45–95 p.s.i.)	315 / 270	
NEW ENDURANCE 7TR 32	32-622 700×32C	325 g	2.5–5 bar (35–85 p.s.i.)	315 / 270	
COMTURA 4 TR 25	25-622 700×25C	260 g	5–7 bar (75–100 p.s.i.)	210 / 375	
COMTURA 4 TR 28	28-622 700×28C	280 g	4–6 bar (60–90 p.s.i.)	210 / 375	
COMTURA 4 TR 30	30-622 700×30C	300 g	2.5–5.5 bar (35–80 p.s.i.)	210 / 375	
COMTURA 5 TR 25	25-622 700×25C	280 g	5–7 bar (75–100 p.s.i.)	210 / 375	
COMTURA 5 TR 28	28-622 700×28C	300 g	4–6 bar (60–90 p.s.i.)	210 / 375	

CLINCHER TYRES

CALIBRA PLUS 25	25-622 700×25C	210 g	6–9 bar (90–130 p.s.i.)	120 / 240	
CALIBRA PLUS 28	28-622 700×28C	235 g	6–8 bar (90–115 p.s.i.)	120 / 240	
COMTURA DUO 25	25-622 700×25C	225 g	6–9 bar (90–130 p.s.i.)	120 / 240	
COMTURA DUO 28	28-622 700×28C	250 g	6–8 bar (90–115 p.s.i.)	120 / 240	
COMTURA AERO 25	25-622 700×25C	215 g	6–9 bar (90–130 p.s.i.)	120 / 240	
COMTURA AERO 28	28-622 700×28C	240 g	6–8 bar (90–115 p.s.i.)	120 / 240	

TUBULARS

ELITE RIDE	28" 23 mm	250 g	8–15 bar (115–220 p.s.i.)	210 / 375	
ELITE RIDE 25	28" 25 mm	290 g	6–10 bar (90–145 p.s.i.)	210 / 375	
S33 PRO	28" 21 mm	260 g	8–12 bar (115–175 p.s.i.)	60 / 90	
S33 PRO 24	28" 24 mm	310 g	6–8 bar (90–115 p.s.i.)	60 / 90	
HI-COMPOSITE CARBON	28" 23 mm	260 g	8–12 bar (115–175 p.s.i.)	120 / 240	
HI-COMPOSITE CARBON 25	28" 25 mm	300 g	6–8 bar (90–115 p.s.i.)	120 / 240	
HI-COMPOSITE CARBON 28	28" 28 mm	320 g	5–8 bar (70–115 p.s.i.)	120 / 240	
NEW ELITE PRIMA	28" 25 mm	220 g	6–10 bar (90–145 p.s.i.)	210 / 375	
ELITE JET <160 g	28" 20 mm	<160 g	10–15 bar (145–220 p.s.i.)	210 / 375	
ELITE S3 <225 g	28" 23 mm	<225 g	8–15 bar (115–220 p.s.i.)	210 / 375	
ELITE S3 25 <265 g	28" 25 mm	<265 g	6–10 bar (90–145 p.s.i.)	210 / 375	
NEW DIAMOND ALLROAD	28" 28 mm	320 g	5–8 bar (70–115 p.s.i.)	200 / 275	
ELITE PULSE	28" 22 mm	230 g	8–15 bar (115–220 p.s.i.)	210 / 375	
ELITE PULSE 25	28" 25 mm	280 g	6–10 bar (90–145 p.s.i.)	210 / 375	
S3 26" LITE <200 g	26" 21 mm	<200 g	8–15 bar (115–220 p.s.i.)	120 / 240	
S3 LITE <215 g	28" 21 mm	<215 g	8–15 bar (115–220 p.s.i.)	120 / 240	

TUBULAR CLINCHERS

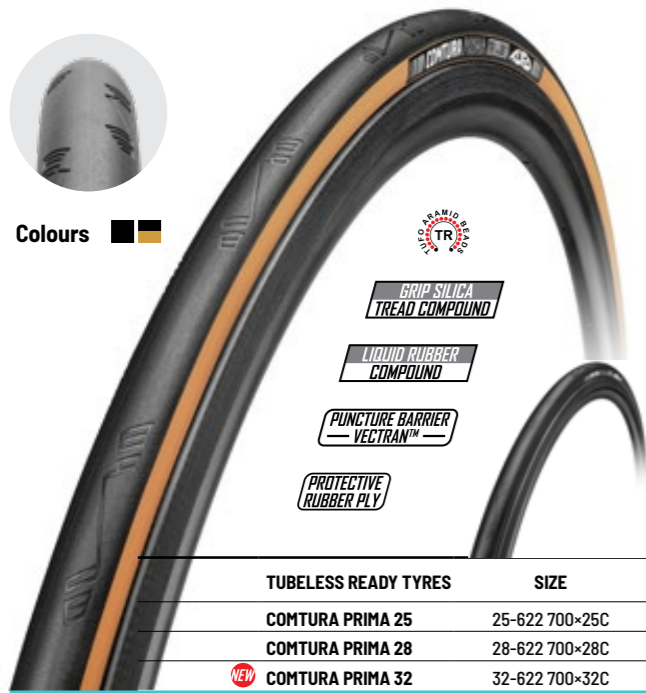
C S33 PRO	28" 21 mm	335 g	8–12 bar (115–175 p.s.i.)	60 / 90	
C S33 PRO 24	28" 24 mm	385 g	6–8 bar (90–115 p.s.i.)	60 / 90	
C ELITE RIDE	28" 23 mm	315 g	8–15 bar (115–220 p.s.i.)	210 / 375	
C ELITE RIDE 25	28" 25 mm	355 g	6–10 bar (90–145 p.s.i.)	210 / 375	
C HI-COMPOSITE CARBON	28" 23 mm	335 g	8–12 bar (115–175 p.s.i.)	120 / 240	
C HI-COMPOSITE CARBON 25	28" 25 mm	375 g	6–8 bar (90–115 p.s.i.)	120 / 240	

Due to the use of natural materials, the tyre weight can fluctuate ±5 %. For tyres with the weight specified on the tyre label, this weight is guaranteed as the highest. We reserve the right to carry out changes.

» COMTURA PRIMA

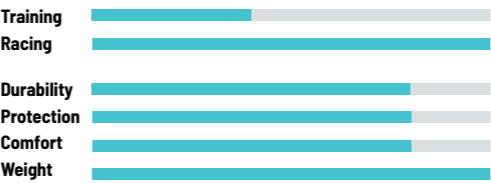


Colours



Tubeless ready road tyre for best the performance. Hookless compatible.

The new COMTURA PRIMA TR is an extension of our range of road tubeless tyres. We have developed completely new compounds for this model. The tread compound provides an excellent grip in all conditions, especially in wet weather. Hard to find competition in wet weather. Thanks to additional compounds, this tyre is able to achieve low rolling resistance and weight. The COMTURA PRIMA TR is the ideal choice for racing and performance cycling.



TUBELESS READY TYRES	SIZE	WEIGHT	PRESSURE	TPI Count <small>Sidewall area / Under the tread</small>
COMTURA PRIMA 25	25-622 700×25C	220 g	4-6.5 bar (60-95 p.s.i.)	210 / 375
COMTURA PRIMA 28	28-622 700×28C	240 g	3 - 6.5 bar (45-95 p.s.i.)	210 / 375
NEW COMTURA PRIMA 32	32-622 700×32C	265 g	2.5 - 5.5 bar (35-80 p.s.i.)	210 / 375

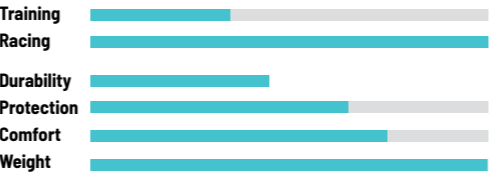
» COMTURA PRIMA TT



Colours

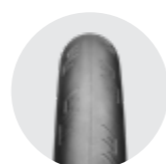


The Comtura Prima TT is TUFO's fastest road tyre - designed for riders who don't want to compromise between speed, grip and reliability. Thanks to its innovative construction, premium materials and latest technologies, it sets new standards in performance. Weighing just 205 grams in the 700x28C variant, it still offers exceptional strength, stability and comfort while maintaining a low profile.

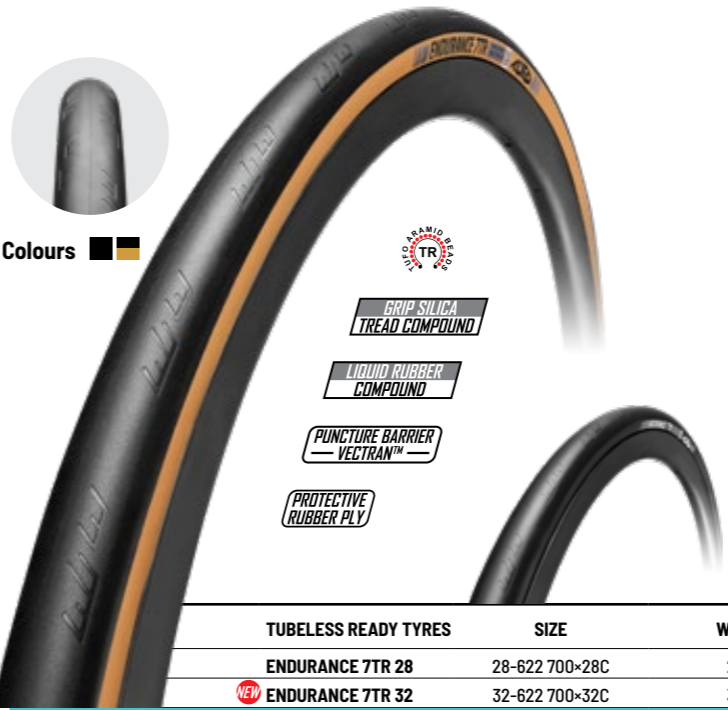


TUBELESS READY TYRES	SIZE	WEIGHT	PRESSURE	TPI Count <small>Sidewall area / Under the tread</small>
NEW COMTURA PRIMA TT 28	28-622 700×28C	205 g	3-5.9 bar (45-85 p.s.i.)	400 / 665

» ENDURANCE 7 TR



Colours



A tyre that redefines the limits of comfort, performance, and reliability. With its innovative construction, it offers exceptional stability, grip, and comfort, making it the perfect choice for anyone seeking maximum quality and performance on longer rides.



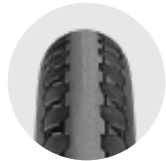
TUBELESS READY TYRES	SIZE	WEIGHT	PRESSURE	TPI Count <small>Sidewall area / Under the tread</small>
ENDURANCE 7TR 28	28-622 700×28C	295 g	3-6.5 bar (45-95 p.s.i.)	315 / 270
NEW ENDURANCE 7TR 32	32-622 700×32C	325 g	2.5-5 bar (35-85 p.s.i.)	315 / 270

TUFO PARDUS PROSTEJOV

The TUFO PARDUS Prostějov team is registered in the UCI Continental Teams category for the twelve years, TUFO has been their title partner throughout this period. TUFO branded tyres have helped the team to achieve many great results, including World and European Championships. TUFO is characterised by high reliability and offers all the necessary parameters for racing and training at the highest level.



» COMTURA 4 TR



Colours



SPC SILICA
TREAD COMPOUND

TUBELESS READY
COMPOUND

PUNCTURE BARRIER
VECTRAN™

PROTECTIVE
RUBBER PLY



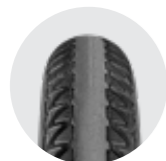
Tubeless ready road tyre for those who cannot be bothered with inner tubes anymore. Hookless compatible.

Comtura 4 TR is protected very well against flats by PUNCTURE BARRIER VECTRAN™ under the tread area. Great ride comfort and excellent mileage provided by this tyre should be a holy grail for each tubeless fan.



TUBELESS READY TYRES	SIZE	WEIGHT	PRESSURE	TPI Count <small>Sidewall area / Under the tread</small>
COMTURA 4 TR 25	25-622 700×25C	260 g	5-7 bar (75-100 p.s.i.)	210 / 375
COMTURA 4 TR 28	28-622 700×28C	280 g	4-6 bar (60-90 p.s.i.)	210 / 375
COMTURA 4 TR 30	30-622 700×30C	300 g	2.5-5.5 bar (30-80 p.s.i.)	210 / 375

» COMTURA 5 TR



Colours



SPC SILICA
TREAD COMPOUND

TUBELESS READY
COMPOUND

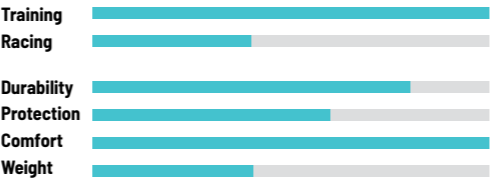
PUNCTURE BARRIER
STANDARD

PROTECTIVE
RUBBER PLY



Tubeless ready road tyre for those who cannot be bothered with inner tubes anymore. Hookless compatible.

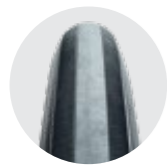
Comtura 5 TR was designed to provide tubeless fans with very reliable tyre, reasonable milage and good price. Although this model is our entry level tubeless tyre it is definitely pleasure to ride this tyre.



TUBELESS READY TYRES	SIZE	WEIGHT	PRESSURE	TPI Count <small>Sidewall area / Under the tread</small>
COMTURA 5 TR 25	25-622 700×25C	280 g	5-7 bar (75-100 p.s.i.)	210 / 375
COMTURA 5 TR 28	28-622 700×28C	300 g	4-6 bar (60-90 p.s.i.)	210 / 375



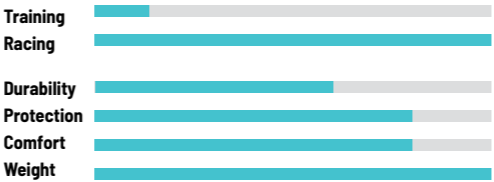
» CALIBRA PLUS



Colours



A very lightweight road racing clincher tyre. Slick tread centre with side grip pattern for extra speed and excellent riding properties on wet or dry pavement. Good puncture resistance.



CLINCHER TYRES	SIZE	WEIGHT	PRESSURE	TPI Count <small>Sidewall area / Under the tread</small>
CALIBRA PLUS 25	25-622 700×25C	210 g	6-9 bar (90-130 p.s.i.)	120 / 240
CALIBRA PLUS 28	28-622 700×28C	235 g	6-8 bar (90-115 p.s.i.)	120 / 240

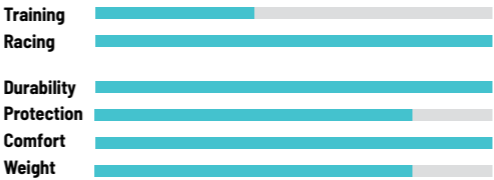
» COMTURA DUO



Colours

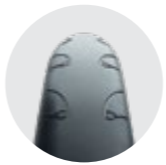


The most universal clincher tyre model in the Comtura line. Comtura Duo is a racing performance tyre with excellent puncture resistance over additional mileage. Performs wherever, whenever to your highest expectations. PUNCTURE BARRIER VECTRAN™ under the tyre tread not only provides the best possible puncture protection but also ensures cornering and stability.



CLINCHER TYRES	SIZE	WEIGHT	PRESSURE	TPI Count <small>Sidewall area / Under the tread</small>
COMTURA DUO 25	25-622 700×25C	225 g	6-9 bar (90-130 p.s.i.)	120 / 240
COMTURA DUO 28	28-622 700×28C	250 g	6-8 bar (90-115 p.s.i.)	120 / 240

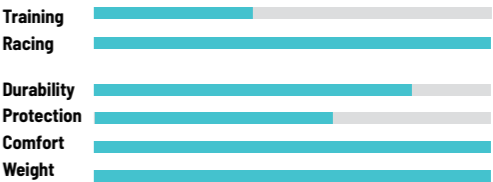
» COMTURA AERO



Colours

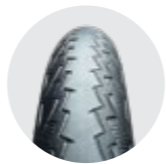


The lightest and fastest clincher tyre model in the Comtura line. Besides being one of the lightest tyres on the market, it still offers great mileage and great puncture protection. Comtura Aero is a racing performance tyre with amazing reliability. PUNCTURE BARRIER VECTRAN™ under the tyre tread not only provides the best possible puncture protection but also ensures cornering and stability.



CLINCHER TYRES	SIZE	WEIGHT	PRESSURE	TPI Count <small>Sidewall area / Under the tread</small>
COMTURA AERO 25	25-622 700×25C	215 g	6-9 bar (90-130 p.s.i.)	120 / 240
COMTURA AERO 28	28-622 700×28C	240 g	6-8 bar (90-115 p.s.i.)	120 / 240

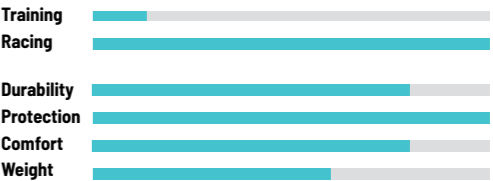
» ELITE RIDE



Colours

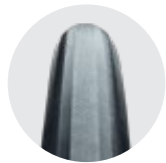


This tubular tyre model provides comfortable, smooth and fast ride with minimum of vibrations even in the most demanding conditions of road cycling. Wide tyre tread overlapping the sidewall and the puncture proof ply in the middle of the tread effectively decrease the possibility of flats.



TUBULARS	SIZE	WEIGHT	PRESSURE	TPI Count <small>Sidewall area / Under the tread</small>
ELITE RIDE	28" 23 mm	250 g	8-15 bar (115-220 p.s.i.)	210 / 375
ELITE RIDE 25	28" 25 mm	290 g	6-10 bar (90-145 p.s.i.)	210 / 375
TUBULAR CLINCHERS				
C ELITE RIDE	28" 23 mm	315 g	8-15 bar (115-220 p.s.i.)	210 / 375
C ELITE RIDE 25	28" 25 mm	355 g	6-10 bar (90-145 p.s.i.)	210 / 375

» S33 PRO



Colours



CARBON BLACK
TREAD COMPOUND



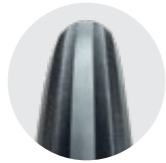
Very popular training tyre for all around use with higher inflation pressure.



TUBULARS	SIZE	WEIGHT	PRESSURE	TPI Count <small>Sidewall area / Under the tread</small>
S33 PRO	28" 21mm	260 g	8-12 bar (115-175 p.s.i.)	60 / 90
S33 PRO 24	28" 24 mm	310 g	6-8 bar (90-115 p.s.i.)	60 / 90
TUBULAR CLINCHERS				
C S33 PRO	28" 21mm	335 g	8-12 bar (115-175 p.s.i.)	60 / 90
C S33 PRO 24	28" 24 mm	385 g	6-8 bar (90-115 p.s.i.)	60 / 90

Rim size 28" 700 C E.T.R.T.O. 622-(13-15) mm

» HI-COMPOSITE CARBON

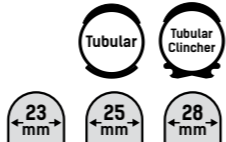


Colours

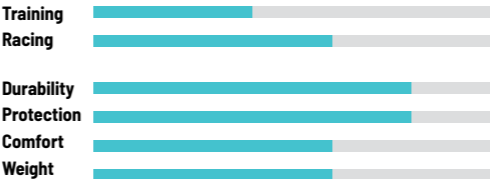


PUNCTURE BARRIER
STANDARD

SPG SILICA
TREAD COMPOUND



Application of composite puncture proof ply and high composite carbon tread compound made possible to use thinner tread and still maintain high mileage. Thinner tread also lowers rolling resistance while the tyre is maintaining ideal shock absorption properties and high puncture resistance.



TUBULARS	SIZE	WEIGHT	PRESSURE	TPI Count <small>Sidewall area / Under the tread</small>
HI-COMPOSITE CARBON	28" 23 mm	260 g	8-12 bar (115-175 p.s.i.)	120 / 240
HI-COMPOSITE CARBON 25	28" 25 mm	300 g	6-8 bar (90-115 p.s.i.)	120 / 240
HI-COMPOSITE CARBON 28	28" 28 mm	320 g	5-8 bar (70-115 p.s.i.)	120 / 240
TUBULAR CLINCHERS				
C HI-COMPOSITE CARBON	28" 23 mm	335 g	8-12 bar (115-175 p.s.i.)	120 / 240
C HI-COMPOSITE CARBON 25	28" 25 mm	375 g	6-8 bar (90-115 p.s.i.)	120 / 240

Rim size 28" 700 C E.T.R.T.O. 622-(13-15) mm

» ELITE PRIMA



Colours



GRIP SILICA
TREAD COMPOUND

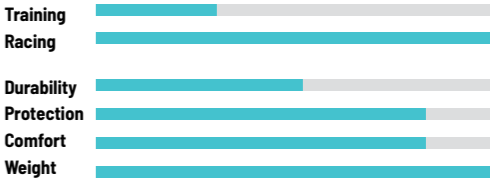
LOW MODULUS
COMPOUND

PUNCTURE BARRIER
VECTRAN™

PROTECTIVE
RUBBER PLY



Elite Prima takes the characteristics of our tubulars to the next level. The experience gained from the development of our tubeless tyres has been applied to the development of this model. By using a new construction, we have obtained better handling characteristics and lower rolling resistance.

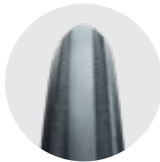


TUBULARS	SIZE	WEIGHT	PRESSURE	TPI Count <small>Sidewall area / Under the tread</small>
ELITE PRIMA	28" 25 mm	220 g	6-10 bar (90-145 p.s.i.)	210 / 375

JAN VONEŠ
Multiple Champion of the Czech Republic.
Elite Czech athlete and a participant in the 2024
Olympics in France.



» ELITE JET



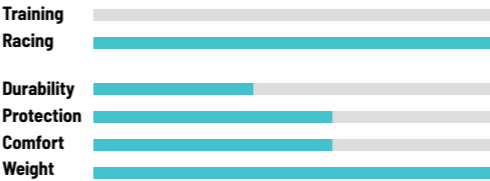
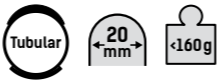
Colours 

PUNCTURE BARRIER
VECTRAN™

PROTECTIVE
RUBBER PLY

SPC SILICA
TREAD COMPOUND

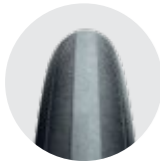
Guaranteed specified weight. Intended for time trials and road races with good surface. In spite of super low weight, this tyre has reasonable puncture resistance and mileage. Possibility of very high inflation pressure, resulting in absolute minimum rolling resistance. Puncture barrier vectran™ under the tyre tread not only provides the best possible puncture protection but also ensures cornering and stability.



TUBULARS	SIZE	WEIGHT	PRESSURE	TPI Count <small>Sidewall area / Under the tread</small>
ELITE JET <160 g	28" 20 mm	<160 g	10–15 bar (145–220 p.s.i.)	210 / 375

*For tyres with weight specified on the tyre label, this weight is guaranteed as the highest.

» ELITE S3



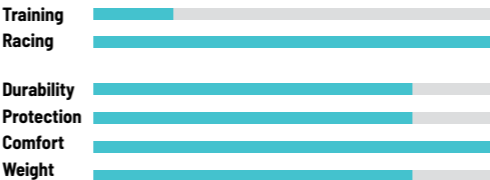
Colours 

VECTRAN™ for
PUNCTURE BARRIER

PROTECTIVE
RUBBER PLY

SPC SILICA
TREAD COMPOUND

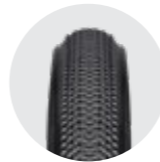
Guaranteed specified weight. In spite of low weight, this tyre has very good puncture resistance and mileage. Elite S3 <225 g is an enhanced successor of the Tufo's best-seller S3 Lite <215 g. In addition to improved tread pattern, it has a new carcass with higher 210/375 TPI count and wider base tape. The result is a supple ride and excellent handling. Puncture barrier vectran™ BARRIER under the tyre tread not only provides the best possible puncture protection but also ensures cornering and stability.



TUBULARS	SIZE	WEIGHT	PRESSURE	TPI Count <small>Sidewall area / Under the tread</small>
ELITE S3 <225 g	28" 23 mm	<225 g	8–15 bar (115–220 p.s.i.)	210 / 375
ELITE S3 25 <265 g	28" 25 mm	<265 g	6–10 bar (90–145 p.s.i.)	210 / 375

*For tyres with weight specified on the tyre label, this weight is guaranteed as the highest.

» DIAMOND ALLROAD



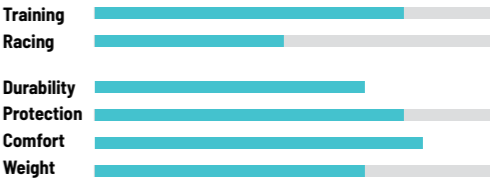
Colours 

GRIP SILICA
TREAD COMPOUND

LOW MODULUS
COMPOUND

PUNCTURE BARRIER
STANDARD

Experience the freedom of riding with the Diamond Allroad 28 mm – a tubular that redefines road cycling! Thanks to its legendary diamond tread pattern, you can seamlessly transition from smooth asphalt to rougher roads or even light gravel. The perfect choice for cyclists who demand speed, grip, and versatility in one tubular.

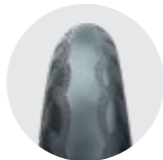


TUBULARS	SIZE	WEIGHT	PRESSURE	TPI Count <small>Sidewall area / Under the tread</small>
DIAMOND ALLROAD	28" 28 mm	320 g	5–8 bar (70–115 p.s.i.)	200 / 275





» ELITE PULSE



Colours ■

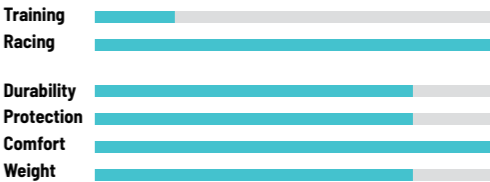


PUNCTURE BARRIER
STANDARD

PROTECTIVE
RUBBER PLY

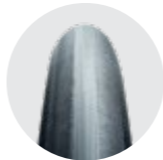
SPC SILICA
TREAD COMPOUND

The top of the line model for wide range of uses. Featuring ideal round tread profile and smooth tread-sidewall transition, this model has minimal aerodynamic head-on resistance. Fine tread pattern together with specially formulated tread compound provide excellent adhesion on wet or dry pavement and low rolling resistance.



TUBULARS	SIZE	WEIGHT	PRESSURE	TPI Count <small>Sidewall area / Under the tread</small>
ELITE PULSE	28" 22 mm	230 g	8-15 bar (115-220 p.s.i.)	210 / 375
ELITE PULSE 25	28" 25 mm	280 g	6-10 bar (90-145 p.s.i.)	210 / 375

» S3 LITE



Colours ■

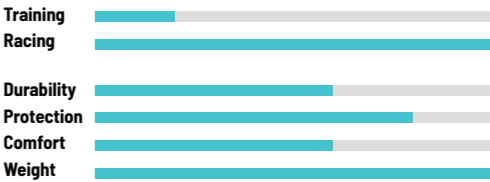


PUNCTURE BARRIER
STANDARD

PROTECTIVE
RUBBER PLY

SPC SILICA
TREAD COMPOUND

Guaranteed specified weight. For use on smooth pavement. Narrow tyre profile minimizes head on aerodynamic resistance. High inflation pressure decreases the rolling resistance significantly.



TUBULARS	SIZE	WEIGHT	PRESSURE	TPI Count <small>Sidewall area / Under the tread</small>
S3 26" LITE <200 g	26" 21mm	<200 g	8-15 bar (115-220 p.s.i.)	120 / 240
S3 LITE <215 g	28" 21mm	<215 g	8-15 bar (115-220 p.s.i.)	120 / 240

*For tyres with weight specified on the tyre label, this weight is guaranteed as the highest.



WOJCIECH PSZCZOLARSKI
3x European Champion in the points race
3rd place World Championship points race
3rd place European Championship Madison

MATERIALS & TECHNOLOGY

CARBON BLACK
TREAD COMPOUND

LOW MODULUS
COMPOUND

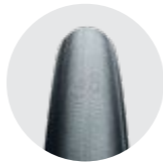
NAN SILICA
TREAD COMPOUND

TRACK CYCLING

TUBULARS	Size	Weight	Pressure	TPI Count <small>Sidewall area / Under the tread</small>	Colours
S3 PRO	28" 21 mm	195 g	8-15 bar (115-220 p.s.i.)	60 / 90	
ELITE <125 g	28" 19 mm	<125 g	10-15 bar (145-220 p.s.i.)	210 / 315	
ELITE <135 g	28" 22 mm	<135 g	10-15 bar (145-220 p.s.i.)	210 / 315	
ELITE <150 g	28" 19 mm	<150 g	10-15 bar (145-220 p.s.i.)	210 / 315	
ELITE <160 g	28" 22 mm	<160 g	10-15 bar (145-220 p.s.i.)	210 / 315	
NEW TRACK PULSE	28" 22 mm	130 g	10-15 bar (145-220 p.s.i.)	400 / 600	

Due to the use of natural materials, the tyre weight can fluctuate ±5 %. For tyres with the weight specified on the tyre label, this weight is guaranteed as the highest. We reserve the right to carry out changes.

» S3 PRO



Colours

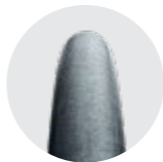


Training
Racing

Ideal track training tyre. High inflation pressures, excellent traction on all types of surfaces and good mileage.

TUBULARS	SIZE	WEIGHT	PRESSURE	TPI Count <small>Sidewall area / Under the tread</small>
S3 PRO	28" 21 mm	195 g	8-15 bar (115-220 p.s.i.)	60 / 90

» ELITE



Colours



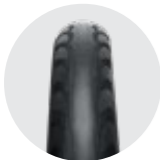
Training
Racing

Guaranteed specified weight. Excellent traction on all track surfaces. Sufficient mileage for intensive racing. Suitable for all track disciplines.

TUBULARS	SIZE	WEIGHT	PRESSURE	TPI Count <small>Sidewall area / Under the tread</small>
ELITE <125 g	28" 19 mm	<125 g	10-15 bar (145-220 p.s.i.)	210 / 315
ELITE <135 g	28" 22 mm	<135 g	10-15 bar (145-220 p.s.i.)	210 / 315
ELITE <150 g	28" 19 mm	<150 g	10-15 bar (145-220 p.s.i.)	210 / 315
ELITE <160 g	28" 22 mm	<160 g	10-15 bar (145-220 p.s.i.)	210 / 315

*For tyres with weight specified on the tyre label, this weight is guaranteed as the highest.

» TRACK PULSE



Colours ■



LOW MODULUS
COMPOUND

NAN SILICA
TREAD COMPOUND



For our new track tubular, we have used a high TPI carcass (200 TPI) for the first time. We have achieved very low rolling resistance by combining this cord with the new compound. The tread compound was developed primarily for good adhesion and low rolling resistance. Tubular is designed exclusively for racing purposes due to its high inflation and excellent performance. Designed for dry surfaces only!



TUBULARS	SIZE	WEIGHT	PRESSURE	TPI Count <small>Sidewall area / Under the tread</small>
TRACK PULSE	28" 22 mm	130 g	10-15 bar (145-220 p.s.i.)	400 / 600

TJ FAVORIT BRNO
TUFO has been working closely with **TJ FAVORIT BRNO** to test new tyres under real racing conditions. The goal is to push performance limits together and bring innovation to both professional and amateur cycling.





MATERIALS & TECHNOLOGY

GRIP SILICA
TREAD COMPOUND

LOW MODULUS
COMPOUND

CARBON BLACK
TREAD COMPOUND

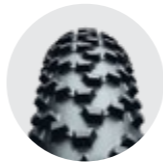
OIL SILICA
TREAD COMPOUND

CYCLO
-CROSS

TUBULARS	Size	Weight	Pressure	TPI Count <small>Sidewall area / Under the tread</small>	Colours
CUBUS 33 SG	28" 33 mm	400 g	max. 4.5 bar (65 p.s.i.)	60 / 90	■
FLEXUS CUBUS 33 SG	28" 33 mm	380 g	max. 3 bar (45 p.s.i.)	210 / 315	■
PRIMUS 33 SG	28" 33 mm	400 g	max. 4.5 bar (65 p.s.i.)	60 / 90	■
FLEXUS DRY PLUS	28" 32 mm	370 g	max. 4.5 bar (65 p.s.i.)	210 / 315	■
DRY PLUS	28" 32 mm	370 g	max. 4.5 bar (65 p.s.i.)	60 / 90	■
FLEXUS PRIMUS 33 SG	28" 33 mm	380 g	max. 3 bar (45 p.s.i.)	210 / 315	■
ELITE PRIMUS	28" 33 mm	380 g	max. 3 bar (45 p.s.i.)	400 / 400	■
ELITE CUBUS	28" 33 mm	380 g	max. 3 bar (45 p.s.i.)	400 / 400	■
ELITE DRY PLUS	28" 32 mm	380 g	max. 3 bar (45 p.s.i.)	400 / 400	■

Due to the use of natural materials, the tyre weight can fluctuate ±5 %. For tyres with the weight specified on the tyre label, this weight is guaranteed as the highest. We reserve the right to carry out changes.

» CUBUS SG



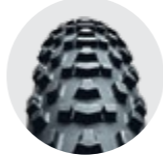
Colours ■



TUBULARS	SIZE	WEIGHT	PRESSURE	TPI Count <small>Sidewall area / Under the tread</small>
CUBUS 33 SG	28" 33 mm	400 g	max. 4.5 bar (65 p.s.i.)	60 / 90
FLEXUS CUBUS 33 SG	28" 33 mm	380 g	max. 3 bar (45 p.s.i.)	210 / 315

Flexus Cubus 33 SG is the universal model suitable for most conditions including the most difficult cyclocross terrains. In spite of the aggressive tread pattern, this model has very low rolling resistance and can be used also on dry terrain and hard pack. Specially formulated soft tread compound enhances the tyre shock absorption.

» PRIMUS SG



Colours ■



TUBULARS	SIZE	WEIGHT	PRESSURE	TPI Count <small>Sidewall area / Under the tread</small>
PRIMUS 33 SG	28" 33 mm	400 g	max. 4.5 bar (65 p.s.i.)	60 / 90
FLEXUS PRIMUS 33 SG	28" 33 mm	380 g	max. 3 bar (45 p.s.i.)	210 / 315

Flexus Primus 33 SG is the top of the line model suitable for most conditions except deep mud. Unique new self cleaning tread pattern ensures excellent traction, special side knobs provide for stable cornering. Specially formulated soft tread compound enhances the tyre shock absorption.

» DRY PLUS



Colours ■

DRY PLUS
CARBON BLACK
TREAD COMPOUND

FLEXUS DRY PLUS
GRIP SILICA
TREAD COMPOUND

Tubular 32 mm

Flexus Dry Plus is model suitable specially for dry and sandy, also for snow and frozen terrain. Fine tread pattern with special side knobs make the ride light, with sure handling in corners. Specially formulated soft tread compound enhances the tyre shock absorption. Extremely low weight, high TPI count, good resistance against flats.

TUBULARS	SIZE	WEIGHT	PRESSURE	TPI Count <small>Sidewall area / Under the tread</small>
DRY PLUS	28" 32 mm	370 g	max. 4.5 bar (65 p.s.i.)	60 / 90
FLEXUS DRY PLUS	28" 32 mm	370 g	max. 4.5 bar (65 p.s.i.)	210 / 315

» ELITE PRIMUS



Colours ■

GRIP SILICA
TREAD COMPOUND

LOW MODULUS
COMPOUND

Tubular 33 mm

TOP model for maximum performance - Suitable for most terrains except deep mud

Training

Racing

TUBULARS	SIZE	WEIGHT	PRESSURE	TPI Count <small>Sidewall area / Under the tread</small>
ELITE PRIMUS 33	28" 33 mm	380 g	max. 3 bar (45 p.s.i.)	400 / 400

» ELITE CUBUS



Colours ■

GRIP SILICA
TREAD COMPOUND

LOW MODULUS
COMPOUND

Tubular 33 mm

TOP model for maximum performance - - Suitable for most terrains including the toughest cyclocross conditions

Training

Racing

TUBULARS	SIZE	WEIGHT	PRESSURE	TPI Count <small>Sidewall area / Under the tread</small>
ELITE CUBUS 33	28" 33 mm	380 g	max. 3 bar (45 p.s.i.)	400 / 400

» ELITE DRY PLUS



Colours ■

GRIP SILICA
TREAD COMPOUND

LOW MODULUS
COMPOUND

Tubular 32 mm

TOP model for maximum performance - Suitable specially for dry and sandy, also for snow and frozen terrain

Training

Racing

TUBULARS	SIZE	WEIGHT	PRESSURE	TPI Count <small>Sidewall area / Under the tread</small>
ELITE DRY PLUS	28" 32 mm	380 g	max. 3 bar (45 p.s.i.)	400 / 400



LEO PEKKA TAHTI
The world's fastest wheelchair
racer, record holder in 100 m event.

MATERIALS & TECHNOLOGY

CARBON BLACK
TREAD COMPOUND

SPC SILICA
TREAD COMPOUND

BIC SILICA
TREAD COMPOUND

PUNCTURE BARRIER
STANDARD

PROTECTIVE
RUBBER PLY

WHEELCHAIR
SPORTS

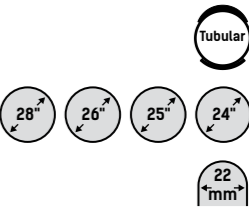
TUBULARS	Size	Weight	Pressure	TPI Count Sidewall area / Under the tread	Colours
MS3 28"	28" 22 mm	330 g	12-16 bar (175-230 p.s.i.)	60 / 120	■
MS3 26"	26" 22 mm	315 g	12-16 bar (175-230 p.s.i.)	60 / 120	■
MS3 25"	25" 22 mm	315 g	12-16 bar (175-230 p.s.i.)	60 / 120	■
MS3 24"	24" 22 mm	300 g	12-16 bar (175-230 p.s.i.)	60 / 120	■
S3 20" LITE <100 g	20" 18 mm	<100 g	10-15 bar (145-220 p.s.i.)	210 / 315	■
S3 26" ROAD	26" 26 mm	230 g	8-15 bar (115-220 p.s.i.)	210 / 375	■
S3 24" ROAD	24" 26 mm	220 g	8-15 bar (115-220 p.s.i.)	210 / 375	■
S3 22" ROAD	22" 26 mm	210 g	8-15 bar (115-220 p.s.i.)	210 / 375	■
S3 20" ROAD	20" 26 mm	200 g	8-15 bar (115-220 p.s.i.)	210 / 375	■

Due to the use of natural materials, the tyre weight can fluctuate ±5 %. For tyres with the weight specified on the tyre label, this weight is guaranteed as the highest.
We reserve the right to carry out changes.

» MS3



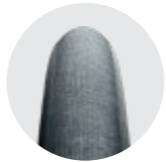
Colours ■



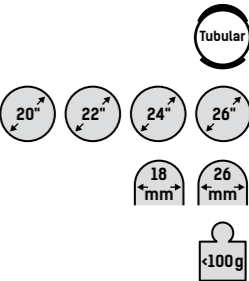
Tubular tyre for clincher rim of specific dimensions. The tyre has specially constructed sidewall and after inflation it holds against the rim lips and will not slip on the rim. The tyre sits mostly inside of the rim, protecting it from a side impact damage. No need to glue on the rim.

TUBULARS	SIZE	WEIGHT	PRESSURE	TPI Count Sidewall area / Under the tread
MS3 28"	28" 22 mm	330 g	12-16 bar (175-230 p.s.i.)	60 / 120
Rim size 28" E.T.R.T.O. 622x21 mm				
MS3 26"	26" 22 mm	315 g	12-16 bar (175-230 p.s.i.)	60 / 120
Rim size 26" E.T.R.T.O. 590x21 mm				
MS3 25"	25" 22 mm	315 g	12-16 bar (175-230 p.s.i.)	60 / 120
Rim size 25" E.T.R.T.O. 559x21 mm				
MS3 24"	24" 22 mm	300 g	12-16 bar (175-230 p.s.i.)	60 / 120
Rim size 24" E.T.R.T.O. 540x21 mm				

» S3

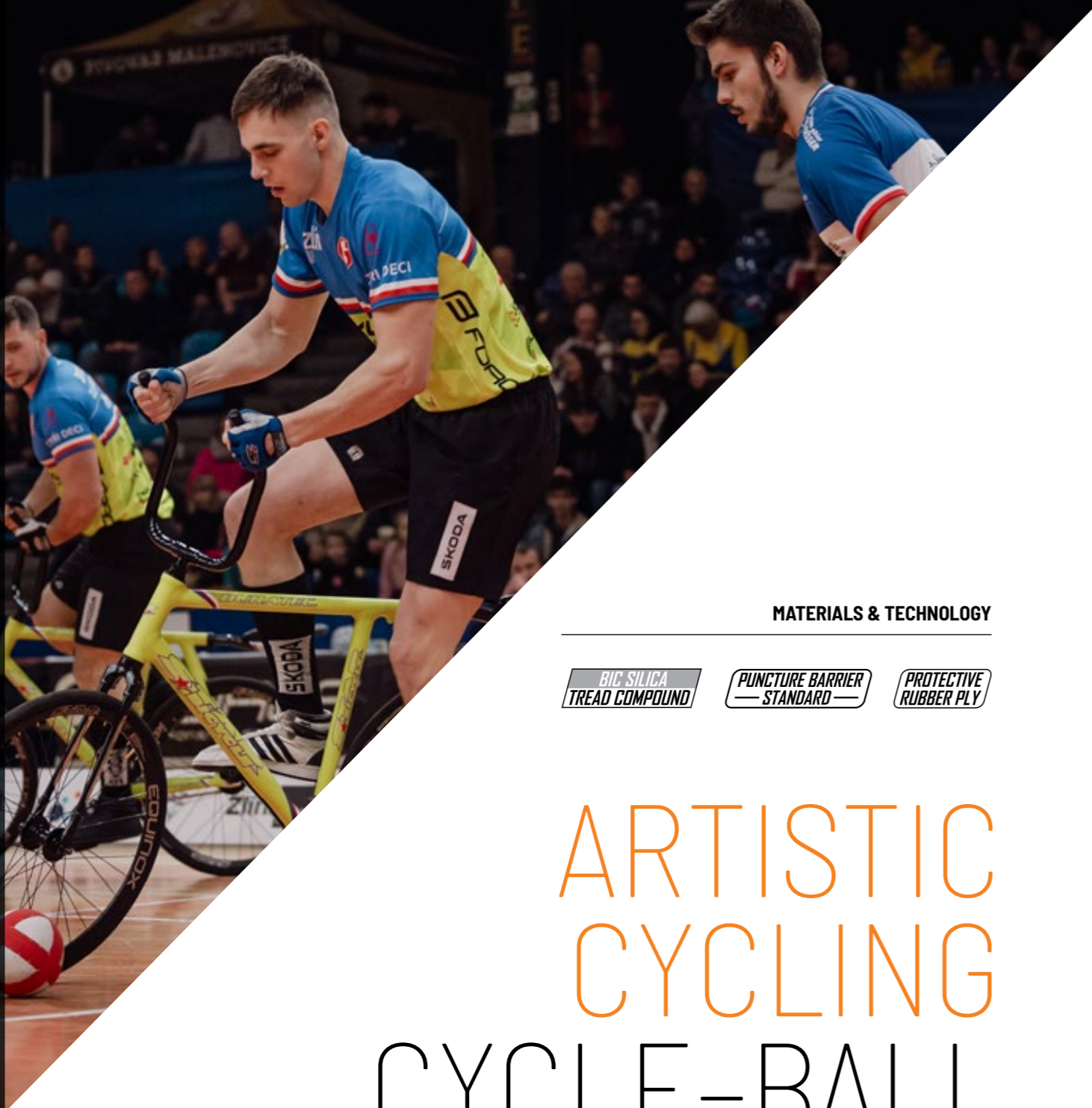


Colours ■



Guaranteed specified weight for LITE model - intended for a front wheel of racing wheelchairs. ROAD models are for wheelchairs and kick scooters.

TUBULARS	SIZE	WEIGHT	PRESSURE	TPI Count Sidewall area / Under the tread
S3 20" LITE <100 g	20" 18 mm	<100 g	10-15 bar (145-220 p.s.i.)	210 / 315
S3 26" ROAD	26" 26 mm	230 g	8-15 bar (115-220 p.s.i.)	210 / 375
S3 24" ROAD	24" 26 mm	220 g	8-15 bar (115-220 p.s.i.)	210 / 375
S3 22" ROAD	22" 26 mm	210 g	8-15 bar (115-220 p.s.i.)	210 / 375
S3 20" ROAD	20" 26 mm	200 g	8-15 bar (115-220 p.s.i.)	210 / 375



MATERIALS & TECHNOLOGY

BIC SILICA
TREAD COMPOUND

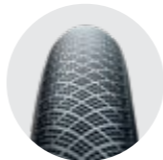
PUNCTURE BARRIER
— STANDARD —

PROTECTIVE
RUBBER PLY

ARTISTIC
CYCLING
CYCLE-BALL

TUBULARS	Size	Weight	Pressure	TPI Count <small>Sidewall area / Under the tread</small>	Colours
ARTISTIC CYCLING 26×1	26×1"	260 g	8–16 bar (115–230 p.s.i.)	210 / 315	■
ARTISTIC CYCLING 26×1 ^{1/8}	26×1 ^{1/8} "	300 g	8–16 bar (115–230 p.s.i.)	210 / 315	■
B3 26×1"	26×1"	350 g	8–16 bar (115–230 p.s.i.)	60 / 120	■ ■ ■ ■ ■
B3 24×1"	24×1"	320 g	8–16 bar (115–230 p.s.i.)	60 / 120	■ ■ ■ ■ ■
B3 22×1"	22×1"	290 g	8–16 bar (115–230 p.s.i.)	60 / 120	■ ■ ■ ■ ■
B3 20×1"	20×1"	260 g	8–16 bar (115–230 p.s.i.)	60 / 120	■ ■ ■ ■ ■
B33 26×1 ^{1/8}	26×1 ^{1/8} "	430 g	8–16 bar (115–230 p.s.i.)	60 / 120	■ ■ ■ ■ ■

» ARTISTIC CYCLING



Colours ■



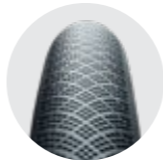
BIC SILICA
TREAD COMPOUND

TUBULARS	SIZE	WEIGHT	PRESSURE	TPI Count <small>Sidewall area / Under the tread</small>
ARTISTIC CYCLING 26×1	26×1"	260 g	8–16 bar (115–230 p.s.i.)	210 / 315
ARTISTIC CYCLING 26×1 ^{1/8}	26×1 ^{1/8} "	300 g	8–16 bar (115–230 p.s.i.)	210 / 315



Specially developed tubular model for artistic cycling. The bicycle is very easy and smoothly to maneuver due to the round tread profile. The optimal tread compound provides excellent adhesion on all types of surfaces. This tubular will help you to master the most difficult exercises.

» B



Colours ■ ■ ■ ■ ■



PUNCTURE BARRIER
— STANDARD —

BIC SILICA
TREAD COMPOUND

TUBULARS	SIZE	WEIGHT	PRESSURE	TPI Count <small>Sidewall area / Under the tread</small>
B3 26×1"	26×1"	350 g	8–16 bar (115–230 p.s.i.)	60 / 120
B3 24×1"	24×1"	320 g	8–16 bar (115–230 p.s.i.)	60 / 120
B3 22×1"	22×1"	290 g	8–16 bar (115–230 p.s.i.)	60 / 120
B3 20×1"	20×1"	260 g	8–16 bar (115–230 p.s.i.)	60 / 120
B33 26×1 ^{1/8}	26×1 ^{1/8} "	430 g	8–16 bar (115–230 p.s.i.)	60 / 120



Optimally dimensioned tread compound together with ideal tread pattern guarantee excellent adhesion on all types of surfaces. Matter of course is long tubular life and exceptional riding properties. Thanks to a special textile protection of the sidewall and reinforcement of the tread part, these tubulars are exceptionally resistant to punctures and damages. Proven Cycle-Ball champion.

*These models are with original tread pattern - not pictured here.



MATERIALS & TECHNOLOGY

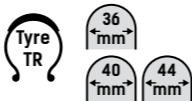


GRAVEL

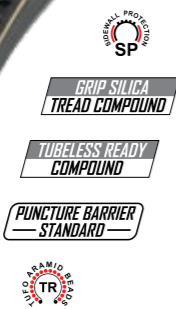
TUBELESS READY TYRES

	Size	Weight	Pressure	TPI Count Sidewall area / Under the tread	Colours
GRAVEL SWAMPERO	36-622 (700x36C)	390 g	2-5 bar (30-70 p.s.i.)	210 / 375	
GRAVEL SWAMPERO	40-622 (700x40C)	430 g	2-5 bar (30-70 p.s.i.)	210 / 375	
GRAVEL SWAMPERO	44-622 (700x44C)	450 g	1.7-4 bar (24.7-58 p.s.i.)	210 / 375	
GRAVEL SWAMPERO HD	36-622 (700x36C)	420 g	2-5 bar (30-70 p.s.i.)	130 / 255	
GRAVEL SWAMPERO HD	40-622 (700x40C)	460 g	2-5 bar (30-70 p.s.i.)	130 / 255	
GRAVEL SWAMPERO HD	44-622 (700x40C)	480 g	1.7-4 bar (25-60 p.s.i.)	130 / 255	
GRAVEL SPEEDERO	36-622 (700x36C)	390 g	2-5 bar (30-70 p.s.i.)	210 / 375	
GRAVEL SPEEDERO	40-622 (700x40C)	430 g	2-5 bar (30-70 p.s.i.)	210 / 375	
GRAVEL SPEEDERO	44-622 (700x44C)	450 g	1.7-4 bar (24.7-58 p.s.i.)	210 / 375	
GRAVEL SPEEDERO HD	36-622 (700x40C)	420 g	2-5 bar (30-70 p.s.i.)	130 / 255	
GRAVEL SPEEDERO HD	40-622 (700x40C)	460 g	2-5 bar (30-70 p.s.i.)	130 / 255	
GRAVEL SPEEDERO HD	44-622 (700x40C)	480 g	2-5 bar (30-70 p.s.i.)	130 / 255	
GRAVEL THUNDERO	36-622 (700x36C)	390 g	2-5 bar (30-70 p.s.i.)	210 / 375	
GRAVEL THUNDERO	40-622 (700x40C)	430 g	2-5 bar (30-70 p.s.i.)	210 / 375	
GRAVEL THUNDERO	44-622 (700x44C)	450 g	1.7-4 bar (24.7-58 p.s.i.)	210 / 375	
GRAVEL THUNDERO	48-622 (700x48C)	470 g	1.4-3.2 bar (20-45 p.s.i.)	210 / 375	
GRAVEL THUNDERO HD	36-622 (700x40C)	420 g	2-5 bar (30-70 p.s.i.)	130 / 255	
GRAVEL THUNDERO HD	40-622 (700x40C)	460 g	2-5 bar (30-70 p.s.i.)	130 / 255	
GRAVEL THUNDERO HD	44-622 (700x40C)	480 g	1.7-4 bar (30-70 p.s.i.)	130 / 255	
GRAVEL THUNDERO HD	48-622 (700x40C)	500 g	1.4-3.2 bar (20-45 p.s.i.)	130 / 255	

» GRAVEL SWAMPERO



Colours



THE PERFECT TUBELESS READY TYRE FOR THE MOST CHALLENGING CONDITIONS. NO NEED TO WORRY ABOUT THE WEATHER. HOOKLESS COMPATIBLE.

A directional arrow-shaped tread pattern with overlapping central knobs guarantees fast rolling, exceptional grip and self-cleaning properties. The wide tread and the durable flexible Jubena layer covering the sidewalls protect the tyre from receiving damage from stones. A Puncture proof ply under the tread minimizes the risk of punctures and contributes to the overall reliability of the tyre. The high TPI casing construction, together with the soft tread compound, smoothes out any surface and prevents the tyre from bouncing on uneven surfaces. The Swampero is also made to be long lasting and guarantees high mileage.

TUBELESS READY TYRES	SIZE	WEIGHT	PRESSURE	TPI Count <small>Sidewall area / Under the tread</small>
GRAVEL SWAMPERO	36-622 (700x36C)	390 g	2-5 bar (30-70 p.s.i.)	210/375
GRAVEL SWAMPERO	40-622 (700x40C)	430 g	2-5 bar (30-70 p.s.i.)	210/375
GRAVEL SWAMPERO	44-622 (700x44C)	450 g	1.7-4 bar (24.7-58 p.s.i.)	210/375

» GRAVEL SWAMPERO HD



Colours



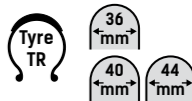
THE PERFECT TUBELESS READY TYRE FOR THE MOST CHALLENGING CONDITIONS. NO NEED TO WORRY ABOUT THE WEATHER. HOOKLESS COMPATIBLE.

A directional arrow-shaped tread pattern with overlapping central knobs guarantees fast rolling, exceptional grip and self-cleaning properties. The wide tread and the durable flexible Jubena layer covering the sidewalls protect the tyre from receiving damage from stones. A Puncture proof ply under the tread minimizes the risk of punctures and contributes to the overall reliability of the tyre. The Swampero is also made to be long lasting and guarantees high mileage.

This HD version extends the existing gravel range with focus on higher loads and operating pressures. Modified construction with stronger warp threads achieves higher durability with only a 30 grams weight increase.

TUBELESS READY TYRES	SIZE	WEIGHT	PRESSURE	TPI Count <small>Sidewall area / Under the tread</small>
GRAVEL SWAMPERO HD	36-622 (700x40C)	420 g	2-5 bar (30-70 p.s.i.)	130/255
GRAVEL SWAMPERO HD	40-622 (700x40C)	460 g	2-5 bar (30-70 p.s.i.)	130/255
GRAVEL SWAMPERO HD	44-622 (700x40C)	480 g	1.7-4 bar (30-70 p.s.i.)	130/255

» GRAVEL SPEEDERO



Colours

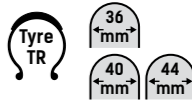


MADE FOR SPEED. IT DOESN'T MATTER IF YOU RIDE ON ASPHALT, COBBLES, FOREST PATHS, SAND, GRASS OR GRAVEL. TUBELESS READY. HOOKLESS COMPATIBLE.

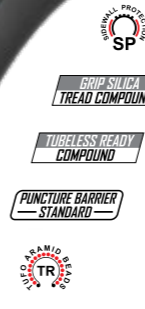
The tubeless ready Speedero always provides uncompromising acceleration and ease of riding with plenty of grip and cornering safety. The wide tread and the durable flexible Jubena layer covering the sidewalls, protect the tyre from receiving damage from stones. A Puncture proof ply under the tread minimizes the risk of punctures and contributes to the overall reliability of the tyre. The high TPI casing construction, together with the soft tread compound, smoothes out any surface and prevents the tyre from bouncing on uneven surfaces. The Speedero is also made to be long lasting and guarantees high mileage.

TUBELESS READY TYRES	SIZE	WEIGHT	PRESSURE	TPI Count <small>Sidewall area / Under the tread</small>
GRAVEL SPEEDERO	36-622 (700x36C)	390 g	2-5 bar (30-70 p.s.i.)	210/375
GRAVEL SPEEDERO	40-622 (700x40C)	430 g	2-5 bar (30-70 p.s.i.)	210/375
GRAVEL SPEEDERO	44-622 (700x44C)	450 g	1.7-4 bar (24.7-58 p.s.i.)	210/375

» GRAVEL SPEEDERO HD



Colours



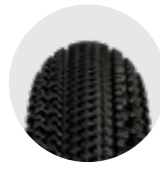
MADE FOR SPEED. IT DOESN'T MATTER IF YOU RIDE ON ASPHALT, COBBLES, FOREST PATHS, SAND, GRASS OR GRAVEL. TUBELESS READY, HOOKLESS COMPATIBLE.

The tubeless ready Speedero always provides uncompromising acceleration and ease of riding with plenty of grip and cornering safety. The wide tread and the durable flexible Jubena layer covering the sidewalls, protect the tyre from receiving damage from stones. A Puncture proof ply under the tread minimizes the risk of punctures and contributes to the overall reliability of the tyre. The Speedero is also made to be long lasting and guarantees high mileage.

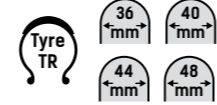
This HD version extends the existing gravel range with focus on higher loads and operating pressures. Modified construction with stronger warp threads achieves higher durability with only a 30 grams weight increase.

TUBELESS READY TYRES	SIZE	WEIGHT	PRESSURE	TPI Count <small>Sidewall area / Under the tread</small>
GRAVEL SPEEDERO HD	36-622 (700x40C)	420 g	2-5 bar (30-70 p.s.i.)	130/255
GRAVEL SPEEDERO HD	40-622 (700x40C)	460 g	2-5 bar (30-70 p.s.i.)	130 / 255
GRAVEL SPEEDERO HD	44-622 (700x40C)	480 g	1.7-4 bar (25-60 p.s.i.)	130 / 255

» GRAVEL THUNDERO



Colours

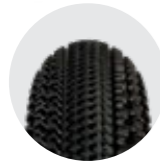


A UNIVERSAL TREAD PATTERN FOR THOSE WHO DON'T WANT TO THINK ABOUT WHERE TO GO. HOOKLESS COMPATIBLE.

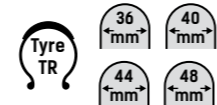
The tubeless ready Thundero can do it all. The middle part of the tread, composed of tightly packed cubes, creates speed and surprisingly quiet rolling with three indented rows of knobs on the outer tread, which bite literally into any surface. This provides excellent grip even on unpaved surfaces and allows you to turn sharply. The wide tread and the durable flexible Jubena layer covering the sidewalls protect the tyre from receiving damage from stones. A Puncture proof ply under the tread minimizes the risk of punctures and contributes to the overall reliability of the tyre. The high TPI casing construction, together with the soft tread compound, smoothes out any surface and prevents the tyre from bouncing on uneven surfaces. The Thundero is also made to be long lasting and guarantees high mileage.

TUBELESS READY TYRES	SIZE	WEIGHT	PRESSURE	TPI Count <small>Sidewall area / Under the tread</small>
GRAVEL THUNDERO	36-622 (700x36C)	390 g	2-5 bar (30-70 p.s.i.)	210/375
GRAVEL THUNDERO	40-622 (700x40C)	430 g	2-5 bar (30-70 p.s.i.)	210/375
GRAVEL THUNDERO	44-622 (700x44C)	450 g	1.7-4 bar (24.7-58 p.s.i.)	210/375
GRAVEL THUNDERO	48-622 (700x48C)	470 g	1.4-3.2 bar (20-45 p.s.i.)	210/375

» GRAVEL THUNDERO HD



Colours



A UNIVERSAL TREAD PATTERN FOR THOSE WHO DON'T WANT TO THINK ABOUT WHERE TO GO. HOOKLESS COMPATIBLE.

The tubeless ready Thundero can do it all. The middle part of the tread, composed of tightly packed cubes, creates speed and surprisingly quiet rolling with three indented rows of knobs on the outer tread, which bite literally into any surface. This provides excellent grip even on unpaved surfaces and allows you to turn sharply. The wide tread and the durable flexible Jubena layer covering the sidewalls protect the tyre from receiving damage from stones. A Puncture proof ply under the tread minimizes the risk of punctures and contributes to the overall reliability of the tyre. The Thundero is also made to be long lasting and guarantees high mileage.

This HD version extends the existing gravel range with focus on higher loads and operating pressures. Modified construction with stronger warp threads achieves higher durability with only a 30 grams weight increase.

TUBELESS READY TYRES	SIZE	WEIGHT	PRESSURE	TPI Count <small>Sidewall area / Under the tread</small>
GRAVEL THUNDERO HD	36-622 (700x40C)	420 g	2-5 bar (30-70 p.s.i.)	130 / 255
GRAVEL THUNDERO HD	40-622 (700x40C)	460 g	2-5 bar (30-70 p.s.i.)	130/255
GRAVEL THUNDERO HD	44-622 (700x40C)	480 g	1.7-4 bar (30-70 p.s.i.)	130 / 255
GRAVEL THUNDERO HD	48-622 (700x40C)	500 g	1.4-3.2 bar (20-45 p.s.i.)	130 / 255






















MTB



I have been using TUFO tyres and tubulars for more than 8 years. From asphalt to mud. In mountain biking and cyclocross they have helped me to achieve many good results and podium finishes. For me, these are products that excel in durability and longevity and do so at a great weight.

MTB

TUBELESS READY TYRES	Size	Weight	Pressure	TPI Count <small>Sidewall area / Under the tread</small>	Colours
XC11 TR 29" SG	29x2.35"	650 g	2-3.5 bar (30-50 p.s.i.)	210 / 375	
XC12 TR 29" SG	29x2.35"	650 g	2-3.5 bar (30-50 p.s.i.)	210 / 375	
XC13 TR 29" SG	29x2.35"	650 g	2-3.5 bar (30-50 p.s.i.)	210 / 375	
XC14 TR 29" SG	29x2.10"	600 g	2-3.5 bar (30-50 p.s.i.)	210 / 375	
XC14 TR 29" SG	29x2.35"	650 g	2-3.5 bar (30-50 p.s.i.)	210 / 375	
TUBULARS	Size	Weight	Pressure	TPI Count <small>Sidewall area / Under the tread</small>	Colours
XC2 29" PLUS	29x2.00"	515 g	max. 3 bar (45 p.s.i.)	210 / 375	
XC2 29" PLUS SP	29x2.00"	545 g	max. 3 bar (45 p.s.i.)	210 / 375	
XC2 27.5" PLUS	27.5x2.00"	480 g	max. 3 bar (45 p.s.i.)	210 / 375	
XC2 27.5" PLUS SP	27.5x2.00"	510 g	max. 3 bar (45 p.s.i.)	210 / 375	
XC2 26" PLUS	26x2.00"	465 g	max. 3 bar (45 p.s.i.)	210 / 375	
XC2 26" PLUS SP	26x2.00"	495 g	max. 3 bar (45 p.s.i.)	210 / 375	
XC4 29" SP	29x2.20"	610 g	max. 3 bar (45 p.s.i.)	210 / 375	
XC4 26" SP	26x2.20"	560 g	max. 3 bar (45 p.s.i.)	210 / 375	
XC5 29"	29x2.00"	595 g	max. 3 bar (45 p.s.i.)	120 / 180	
XC5 27.5"	27.5x2.00"	560 g	max. 3 bar (45 p.s.i.)	120 / 180	
XC6 29" SP	29x2.20"	610 g	max. 3 bar (45 p.s.i.)	210 / 375	
XC6 27.5" SP	27.5x2.20"	580 g	max. 3 bar (45 p.s.i.)	210 / 375	

Due to the use of natural materials, the tyre weight can fluctuate ±5 %. For tyres with the weight specified on the tyre label, this weight is guaranteed as the highest. We reserve the right to carry out changes.

MATERIALS & TECHNOLOGY

GRIP SILICA
TREAD COMPOUND

OIL SILICA
TREAD COMPOUND

GRIP SILICA
TREAD COMPOUND

TUBELESS READY
COMPOUND

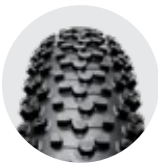
TUBELESS READY
COMPOUND



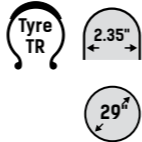
PUNCTURE BARRIER
— STANDARD —



» XC11 TR SG



Colours



Tubeless ready all purpose MTB tyre intended for XC and marathons. The tread pattern of the XC11 TR tyre provides low rolling resistance, self cleaning and good grip. Hookless compatible.

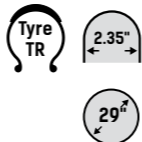


TUBELESS READY TYRES	SIZE	WEIGHT	PRESSURE	TPI Count <small>Sidewall area / Under the tread</small>
XC11 TR 29" SG	29×2.35"	650 g	2-3.5 bar (30-50 p.s.i.)	210 / 375

» XC12 TR SG



Colours

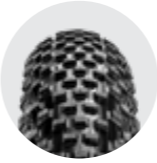


Tubeless ready tyre intended for XC and marathons. The tread pattern is designed for speed and excellent cornering in mixed conditions except deep and sticky mud. Very good shock absorbance provided by this tyre makes this model ideal for using on the roots and bumpy terrain. True XC champion tyre. Design based on our highly appreciated MTB tubular tyres. Hookless compatible.

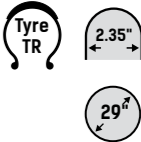


TUBELESS READY TYRES	SIZE	WEIGHT	PRESSURE	TPI Count <small>Sidewall area / Under the tread</small>
XC12 TR 29" SG	29×2.35"	650 g	2-3.5 bar (30-50 p.s.i.)	210 / 375

» XC13 TR SG



Colours

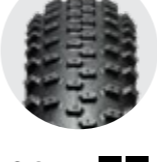


Tubeless ready MTB tyre intended for XC and marathons. The tread pattern of the XC13 TR tyre provides low rolling resistance and good grip. Designed for speed and comfort. For dry conditions and not very demanding terrain. Tyre construction based on our highly appreciated MTB tubular tyres. Hookless compatible.

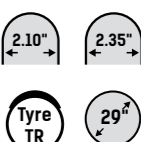


TUBELESS READY TYRES	SIZE	WEIGHT	PRESSURE	TPI Count <small>Sidewall area / Under the tread</small>
XC13 TR 29" SG	29×2.35"	650 g	2-3.5 bar (30-50 p.s.i.)	210 / 375

» XC14 TR SG



Colours

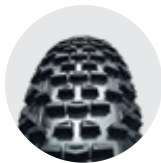


A tubeless ready tyre intended especially for XC races with mixed terrain conditions. A directional arrow-shaped tread pattern provides outstanding grip and fast cornering. Even wet roots and stones won't slow you down. A proven tyre at the World Cup. Hookless compatible.



TUBELESS READY TYRES	SIZE	WEIGHT	PRESSURE	TPI Count <small>Sidewall area / Under the tread</small>
XC14 TR 29" SG	29×2.10"	600 g	2-3.5 bar (30-50 p.s.i.)	210 / 375
XC14 TR 29" SG	29×2.35"	650 g	2-3.5 bar (30-50 p.s.i.)	210 / 375

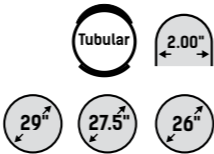
» XC 2



Colours ■

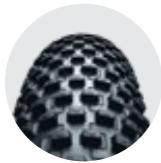


TUBULARS	SIZE	WEIGHT	PRESSURE	TPI Count <small>Sidewall area / Under the tread</small>
XC2 29" PLUS	29×2.00"	515 g	max. 3 bar (45 p.s.i.)	210 / 375
XC2 29" PLUS SP	29×2.00"	545 g	max. 3 bar (45 p.s.i.)	210 / 375
XC2 27.5" PLUS	27.5×2.00"	480 g	max. 3 bar (45 p.s.i.)	210 / 375
XC2 27.5" PLUS SP	27.5×2.00"	510 g	max. 3 bar (45 p.s.i.)	210 / 375
XC2 26" PLUS	26×2.00"	465 g	max. 3 bar (45 p.s.i.)	210 / 375
XC2 26" PLUS SP	26×2.00"	495 g	max. 3 bar (45 p.s.i.)	210 / 375



Super high end racing model for cross country. Tubular construction and extremely low weight give your ride speed, acceleration, dynamics and lightness so far not experienced. Universal tread pattern for all types of terrain except very deep mud. Placement of the tread blocks provides for effective traction when climbing and accelerating.

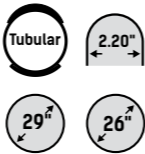
» XC 4



Colours ■



TUBULARS	SIZE	WEIGHT	PRESSURE	TPI Count <small>Sidewall area / Under the tread</small>
XC4 29" SP	29×2.20"	610 g	max. 3 bar (45 p.s.i.)	210 / 375
XC4 26" SP	26×2.20"	560 g	max. 3 bar (45 p.s.i.)	210 / 375



Wider tubular with universal tread pattern for hard pack and rocky terrain. Very good shock absorption, sure ride and high puncture resistance even at very low pressures. This tubular makes "ride on the edge" possible. For cross country and marathon.

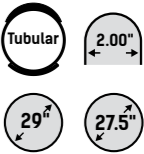
» XC 5



Colours ■

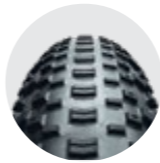


TUBULARS	SIZE	WEIGHT	PRESSURE	TPI Count <small>Sidewall area / Under the tread</small>
XC5 29"	29×2.00"	595 g	max. 3 bar (45 p.s.i.)	120 / 180
XC5 27.5"	27.5×2.00"	560 g	max. 3 bar (45 p.s.i.)	120 / 180



This tubular is constructed for all types of terrain – especially for mud. Suitable for highly demanding and aggressive terrain. Unique self cleaning tread pattern ensures excellent traction, special side knobs provide for stable cornering. Coarse tread makes the ride confident, tubular has very good shock absorbency and high puncture resistance.

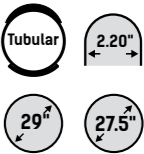
» XC 6



Colours ■



TUBULARS	SIZE	WEIGHT	PRESSURE	TPI Count <small>Sidewall area / Under the tread</small>
XC6 29" SP	29×2.20"	610 g	max. 3 bar (45 p.s.i.)	210 / 375
XC6 27.5" SP	27.5×2.20"	580 g	max. 3 bar (45 p.s.i.)	210 / 375



Tubular tyre for dry and hard pack surfaces. Specially designed low profile knobs make the ride dynamic, fast and light at the same time. The knobs layout will perfectly holds you either on pavement or dirt and will not let you down while cornering. Advanced and technically skilled riders can use this tyre in rougher terrain conditions.



Jo Pirotte

Confident on every surface thanks to TUFO

Jo Pirotte I fully trust **TUFO** tyres, both on MTB and gravel. On the mountain bike, I ride the **XC11/XC12** combo. For gravel, my go-to is the **Gravel Thundero**: 44mm rear, 48mm HD in the front. This setup offers the perfect mix of **durability**, **comfort**, and **speed**. The tougher rubber and wider size absorb shocks and reduce puncture risk, without compromising performance.

With TUFO, I've claimed **multiple Belgian MTB titles in XCC, XC & XCM**. Became **Age Group Gravel World Champion** in Leuven 2024, and won the **TRAKA 100** under brutal conditions.

ACCESSORIES



ELITE REPAIR KIT

1x cleaning tool, 1x plug install tool, 10x adhesive tyre plug - black



TPU TUBE

Road TPU Tube	25mm-32mm	47g
Gravel TPU Tube	36mm-43mm	69g
Gravel TPU Tube	44mm-52mm	77g
MTB TPU Tube	2,1"-2,5"	84g



TUFO TUBELESS RIM TAPE

25 mm × 9.4 m
25 mm × 66 m
30 mm × 9.4 m
30 mm × 60 m



TUBELESS VALVE

2 × tubeless valve 40 or 60mm
2 × valve key



ALUMINUM ALLOY VALVE EXTENSIONS

As the extension is provided with an o ring seal, no self deflation is possible.
Valve extension 21 / 28 / 31mm.



VALVE CORE

Replacement valve core with o-ring seal.



VALVE TOOL

For valve extensions (cut out).
For valve cores (opening).



DANIEL POLMAN

I have relied on TUFO tyres and tubulars for 11 years. I set the current Czech record for 24-hour riding on the Elite Ride 23 tubulars (911.68 km). I have completed many successful races with TUFO MTB XC11 and XC12 tyres including, for example, winning the 400 Ultra race twice.

ACCESSORIES



FLAT TYRE PREVENTION SEALANT

Product for repair of flats of all TUFO tubulars. It can be used preventively when applied to the inside of the tyre before use.

When a flat occurs the sealant seals the puncture so the rider does not even detect getting a flat. It increases safety considerably, since fast loss of air does not occur and, consequently, rider's stability is not affected. Application through the valve stem.

ACCESSORIES: valve tool, 50 ml, for 1 to 3 repairs.



CARBON SEALANT

Proven highly effective product for instant repair of flats of all TUFO tubulars and TUFO tubeless ready tyres. It can be used after getting a flat ONLY. Application through the valve stem.

ACCESSORIES: valve tool, 50ml, for 1 to 2 repairs



TUBELESS READY SEALANT

Our product for TUFO tubeless ready tyres installation and prevention of flats. Tufo Tubeless Ready Sealant has been developed especially for TUFO tubeless ready tyres. Tubeless Ready Sealant can also be used for other brands of tyres.

ACCESSORIES: valve tool, 50ml, 220ml, 1 liter



GLUING TAPE 22mm FOR TUBULAR ROAD TYRES

For one tubular tyre.



GLUING TAPE 19mm FOR TUBULAR ROAD TYRES

For one tubular tyre.



GLUING TAPE 25mm FOR TUBULAR MTB TYRES

For tubular MTB tyre.

TUFO AROUND THE WORLD

We very much appreciate the hard work of all our active distributors across the globe. Most of them have been with us more than decade and already have become our friends. Without all these people TUFO hardly be riding AROUND THE WORLD.

THANK YOU!



- | | | | | |
|----------------------|-------------------------------|-------------------------|---------------------------|--|
| 1 a:G sports | 5 K&V Cycling | 9 KCK CYKLOSPORT | 13 Petal-Spann Kit | 17 Positive SPORTS SOLUTIONS |
| 2 VELO STAR | 6 Chimpance | 10 POREBA | 14 TSA BELTRAMI | 18 TRI SPORTS |
| 3 D'Bike | 7 VELOX | 11 RIDE AHEAD | 15 POOLATO.EU | 19 LEGEND CYCLING |
| 4 CYCLING PRO | 8 Roadsport Components | 12 sgrafit | 16 WOLFI'S | 20 Pro Cycling Imports Pty Ltd. |

AND MANY MORE ...

ACCESSORIES



TUFO BACKPACK

10 Litres volume, 450 g



TUFO FLOOR PUMP

Max. pressure 260 psi/18 bar.

Built-in air tank for easy tubeless tyres set up.



BIDON TUFO LIGHT

51 grams, 550ml capacity



TUFO COTTON CAP