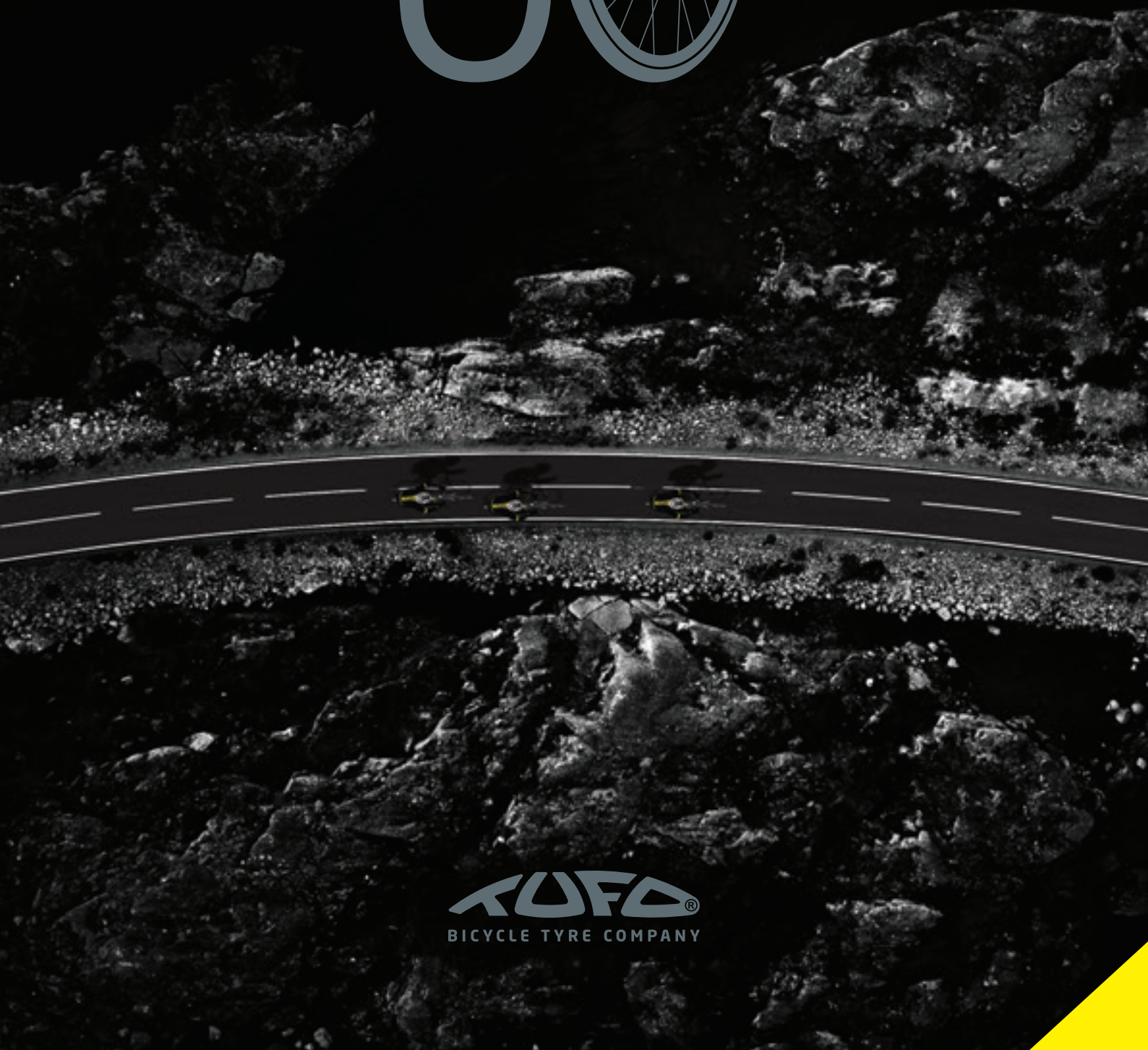


30 YEARS



KUFC®
BICYCLE TYRE COMPANY

A low-angle, silhouette photograph of a cyclist in a racing position, set against a clear blue sky. The cyclist's legs, arms, and the frame of the bicycle are visible. The image is split diagonally, with the right side transitioning into a dark grey area where the text is located.

CONTENTS

04 FOREWORD

06 FROM HISTORY TO THE PRESENT

11 TECHNOLOGY

13 TUBULAR AND TUBULAR CLINCHER

15 RACING TYRE AND TUBELESS TYRE

16 PRODUCTS

57 ACCESSORIES

60 TUFO AROUND THE WORLD

FOREWORD

After 1989, free enterprise was allowed in our country. As a former cycling racer, I was very close to the tubulars and during 1990 I started thinking about the possibility of changing the design of the tubulars so that their useful properties could be improved. It happened on January 13, 1991, I made the first ugly but functional tubular tyre on a very primitive device. After a few modifications and the expansion of production equipment, which I placed in my garden house, I employed the first 5 employees. This was enough for us to sell the products first in the immediate vicinity and then in the whole of what was then Czechoslovakia. A year later, in 1992, we started exporting our tubulars to the USA. The American market was crucial for the real launch of the Tufo brand. From the very beginning, we paid special attention to the quality of our products, using strict checks of each manufactured piece and also by testing the tubulars in our own dynamic testing laboratory. In 1993, we could already afford to rent a larger production and office space in Otrokovice. We then expanded the range with the Tufo sealant, which we developed and the Tufo adhesive tape for gluing tubulars to the rim. In the same year, we launched and patented a world first in bicycle tyres, namely a tubular for a clincher rim - the so-called tubular clincher. In 1994, we managed to enter into the Australian and Japanese markets, and we gradually gained distributors in other Asian countries. We were still doing well in America and we were already able to cover all branches of cycling with our tubulars. We bought the leased premises in Otrokovice and in 1996 we started to build a new Tufo headquarters with production, storage and office space. In 2006, we were forced to further expand the production part of the building and that's how Tufo headquarters got its present appearance. In 2008, we invested in the purchase of an old production building in the original Baťa plant in Zlín and by 2011 we began to develop and produce bicycle tyres there. Gradually, we acquired production for mixing rubber compounds and set up a modern physical and mechanical laboratory. Because of our extensive research and product development, we were able to add tubeless tyres to our production in 2018.

PŘEDMLUVA

Po roce 1989 bylo v naší zemi umožněno svobodné podnikání. Jako bývalý cyklistický závodník jsem měl velmi blízko ke galuskám a v průběhu roku 1990 jsem začal uvažovat o možnosti změnit konstrukci galusek tak, aby byly zlepšeny jejich užité vlastnosti. Na velmi primitivním zařízení jsem vyrobil první nevzhlednou, ale funkční galusku. Stalo se tak dne 13.1.1991. Po úpravách a rozšíření výrobního zařízení, které jsem umístil do zahradního domku a kde posléze začalo pracovat prvních 5 spolupracovníků, nám tohle postačovalo k prodeji výrobků nejprve v nejbližším okolí a poté v celém tehdejší Československu. O rok později, v roce 1992, jsme již vyváželi naše galusky i do USA. Americký trh byl pro skutečný rozjezd značky Tufo zcela zásadní. Od samého počátku jsme věnovali mimořádnou pozornost kvalitě našich výrobků, jednak přísnou kontrolou každého vyrobeného kusu a také testováním galusek na vlastní dynamické zkušebně. V roce 1993 jsme si již mohli dovolit pronajmout větší výrobní a kancelářské prostory v Otrokovících. Sortiment jsme rozšířili o námi vyvinutý opravný prostředek Tufotmel a o lepicí pásku Tufo na lepení galusky na ráfek. V téže roce jsme uvedli na trh a patentovali světovou novinku v obouvání kol a to galusku na plášťový klinčrový ráfek - tzv. plášťovku. V roce 1994 se nám podařilo dostat i na australský a japonský trh, postupně jsme získávali distributory i v dalších asijských zemích. V Americe se nám stále dobře dařilo a již jsme byli schopni pokrýt našimi galuskami a plášťovkami všechna odvětví cyklistiky. Pronajaté prostory jsme koupili a v roce 1996 jsme začali stavět nové sídlo Tufo s výrobními, skladovými a kancelářskými prostory. V roce 2006 jsme byli nuceni výrobní část budovy dále rozšířit a tak sídlo Tufa dostalo dnešní podobu. V roce 2008 investujeme do koupě staré výrobní budovy v původních Baťových závodech ve Zlíně, kde zahajujeme vývoj a výrobu veloplášťů v roce 2011. Postupně zde pořizujeme linky na míchání kaučukových směsí a zřizujeme moderní fyzikálně mechanickou laboratoř. To nám kromě rozsáhlého základního výzkumu a vývoje výrobků umožnilo v roce 2018 přidat do výroby bezdušové pláště.



Founder of TUFO /Zakladatel firmy TUFO
Ing. Miloslav KLABAL



Miloslav's racing career
Závodní kariéra Miloslava Klabala



My tubular cycling stage began in 1961, when my parents bought me a racing bike with tubular tyres. From that moment on, there wasn't day when I wouldn't ride a bike. Once the first successes in the form of medals arrived, I couldn't be stopped.

After 1989, when it was possible to start a business freely in our country, I decided to develop and implement the production of tubular tyres of my own design and its production technology.

Today we have a number of great co-workers in all areas of the company's operations. It is also thanks to them that we can have such a wide range of products for all branches of cycling and export to all continents of the world.



Moje cyklistická galusková etapa začala v roce 1961, kdy mi rodiče koupili závodní kolo na galuskách.

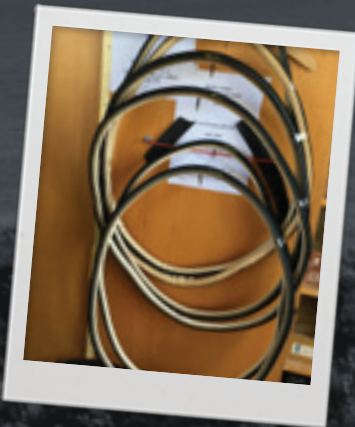
Od toho okamžiku nebyl den, kdy bych neseseděl na kole. Jakmile se dostavily první úspěchy v podobě medailí tak jsem nebyl k zastavení.

Po roce 1989, kdy v naší zemi bylo možné začít svobodně podnikat, jsem se rozhodl pro vývoj a pro realizaci výroby galusek vlastní konstrukce a technologie výroby.

Dnes máme řadu skvělých spolupracovníků na všech úsecích činnosti firmy. A je také jejich zásluhou, že můžeme mít tak široký sortiment výrobků pro všechna odvětví cyklistického sportu a export na všechny kontinenty světa.

From HISTORY to the PRESENT

» 1991



The very first Tufo tubular production made by a unique technology without the bottom seam.

První Tufo galusky vyráběné unikátní technologií bez šití.



First tubular mould S1.
První forma na galusku S1.



„Production line“ in the garden house.
„Výrobní linka“ v zahradním domku na Žlutavě

» 1992



Tufo patented the tubular clincher construction.
Patentovali jsme si unikátní konstrukci plášťovky.



Our very first ad in a US magazine.
Historicky první reklama TUFO v americkém časopise.

» 1997



We built the new HQ TUFO.
We were employing 20 people.
Yearly production was 60K tubulars.
Postavili jsme novou centrálu TUFO.
Ročně jsme vyráběli 60 tis. galusek.
Zaměstnávali jsme 20 lidí.



We bought the original production building in the former Tomas Bata shoe factory in Zlin.
Koupili jsme původní výrobní budovu v areálu Batových závodů ve Zlině.

» 2002



Lada Kozlikova winning the World Track Championship in Copenhagen on Tufo.
Světová šampionka Lada Kozliková získala zlatou medaili na dráhovém MS v Kodani na Tufo galuskách.



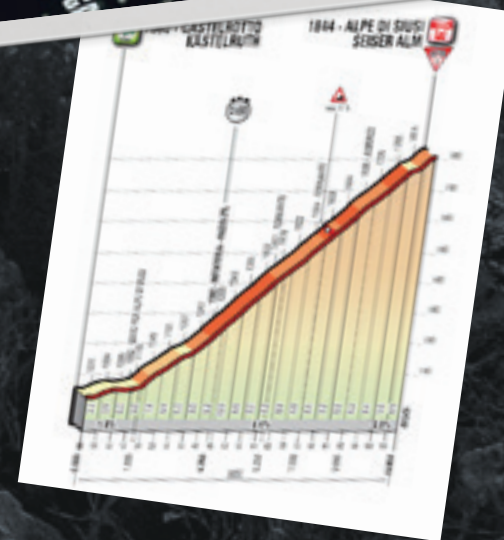
A young Peter Sagan after winning a gold medal at the MTB World Championship in Val di Sole on Tufo's.
Peter Sagan získal na Tufo galuskách zlatou medaili na Mistrovství světa v horských kolech ve Val di Sole.

» 2008

» 2016

Alexander Foliforov won the 15th stage at Giro d' Italia on Tufo tubulars.

Alexander Foliforov vyhrál 15. etapu Giro d' Italia na galuskách Tufo.



» 2021

Production and development nowadays.
Dnešní výroba a vývoj.



How we see the FUTURE

... and how do we see Tufo's FUTURE?

We might either place this question to Mr. Elon Musk because he surely knows ... Ooor we can just stick to our high quality production standards, be always ready to produce for you just

the right tyres according to your needs and have fun with all of you on the roads, on the forest paths, on the muddy courses and everywhere else. We are opting for „B“ :)

2027 2050 3000

... a jak vidíme BUDOUCNOST Tufo?

Bud' bychom tuto otázku mohli položit panu Elonu Muskovi, protože ten určitě ví ... Nebo si můžeme držet vysoko nastavenou kvalitu výroby, být vždy připraveni vyrábět pro Vás ty správné

pneumatiky podle Vašich potřeb a užívat si to s Vámi všemi na silnicích, lesních cestách, blátivých okruzích a všude jinde. Volíme určitě „B“ :)

TUFO AMBASSADOR » JIRKA JEZEK



Jirka Jezek

All my professional career, Six Gold Medals at Paralympic Games and Six UCI ParaCycling World Champion titles on TUFO tires! What else to say...

Celá moje profesionální kariéra, šest zlatých medailí na paralympijských hrách a šest titulů mistra světa UCI ParaCycling na TUFECH! Co k tomu dodat ...

TECHNOLOGY

CARBON BLACK TREAD COMPOUND

A durable tread compound that has proven its quality for years. This standard compound with a high content of Carbon black guarantees very good mileage for road tubulars, durability and puncture resistance in certain cyclo-cross tubulars and low weight for selected track tubulars.

SPC SILICA TREAD COMPOUND

We use this high performance road racing tread compound in the majority of our road tubulars and road tyres. With 66 Shore A hardness this well-balanced blend of synthetic and natural rubbers with Activated Silica filler provides tubulars with excellent wet grip and low rolling resistance.

NAN SILICA TREAD COMPOUND

This is an indoor wooden track specific compound for extra speed, grip and quick handling. Not suitable for wet conditions.

OIL SILICA TREAD COMPOUND

A soft compound (60 Shore A) developed for MTB cross country and marathon tubulars. Adding a reasonable amount of oil to a polymer blend with Activated Silica improves traction and reduces rolling resistance. Reasonable tread wear.

BIC SILICA TREAD COMPOUND

A compound for indoor sports on wooden or plastic floors. Used in Cycle-ball, Artistic cycling and wheelchairs sports tubulars for excellent traction and quick handling. Manufactured in many colours including black, this compound doesn't leave any colour marks on floors. Not suitable for wet conditions.



A very light rubber/polyester composite antipuncture layer. This is used in Calibra tyres to enhance sidewall durability.

VECTRAN™ for PUNCTURE BARRIER

This most effective anti-puncture system is placed directly under the tread area. A core of the anti-puncture system is made from VECTRANTM – liquid crystal polymer (LCP) fibres which are five times stronger than steel. VECTRANTM offers also outstanding cut resistance and high impact resistance at a low weight – highly demanding properties for high-end bicycle tyres. VECTRANTM for PUNCTURE BARRIER not only provides the best possible puncture protection but also ensures cornering and stability.



A specially formulated slippery sidewall strip protects the most vulnerable part of certain MTB tubulars and road tyres. This special sidewall strip allows the tyre to slide off sharp edges without damaging the tyre carcass.

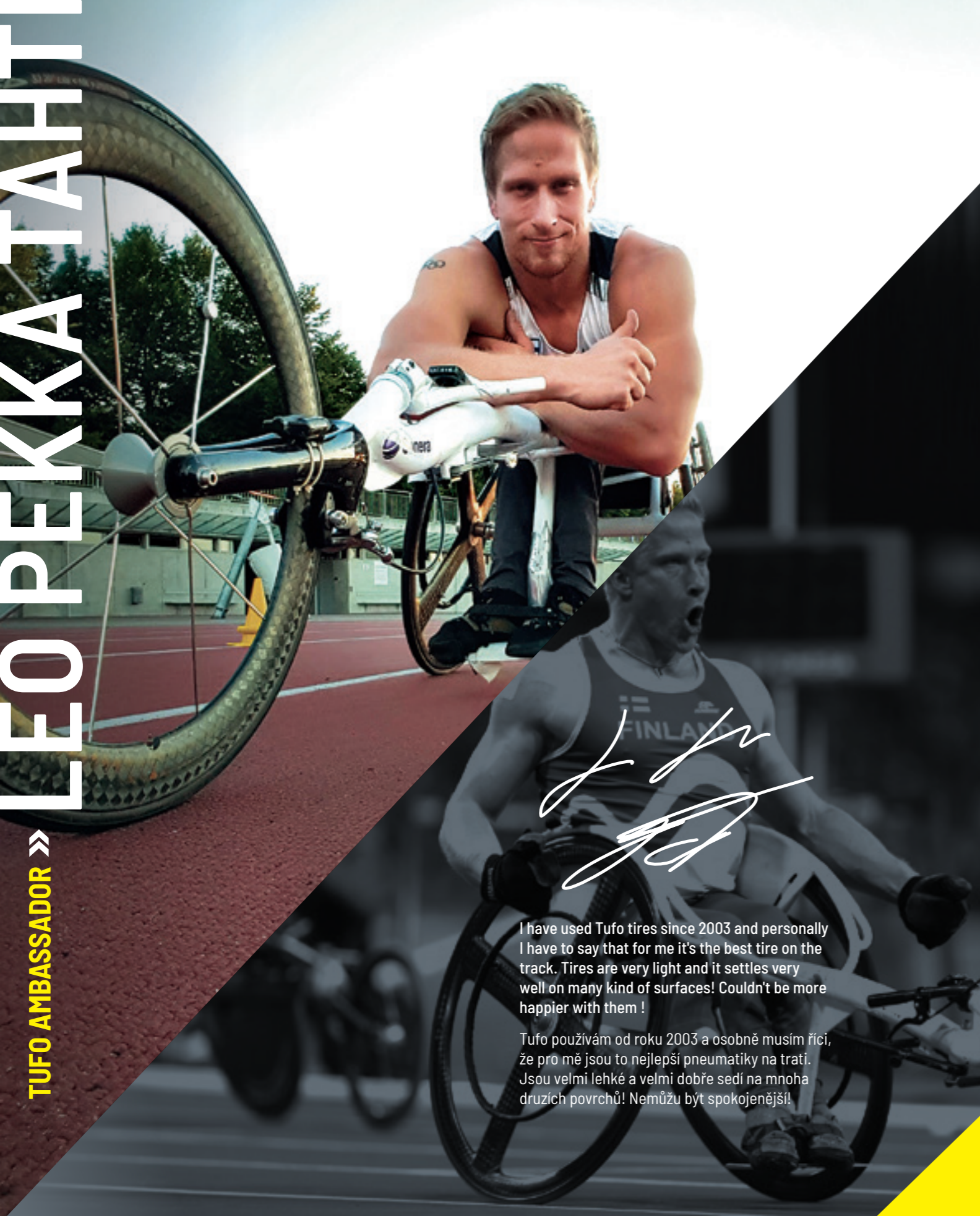
CRCA

CRCA (CARCASS RUBBER COMPOUND WITH LONG ARAMID FIBRES) is a special composite material, by means of which the high modulus long aramid fibres are introduced into the tyre carcass during the technological process.

CRCA increases the puncture resistance and total carcass strength.

CRCA improves riding comfort and decreases vibrations. In all models.





I have used Tufo tires since 2003 and personally I have to say that for me it's the best tire on the track. Tires are very light and it settles very well on many kind of surfaces! Couldn't be more happier with them !

Tufo používám od roku 2003 a osobně musím říci, že pro mě jsou to nejlepší pneumatiky na trati. Jsou velmi lehké a velmi dobře sedí na mnoha druzích povrchů! Nemůžu být spokojenější!

TUBULAR AND TUBULAR CLINCHER

The Construction of both types is essentially the same, consisting of closed tubular toroid. The difference is only in the installation of the tyre on the rim.

Tubular



- 1 The bead profile reinforcement of tubular clincher tyres provides easy tyre installation and prevents the tyre from unseating in extreme situations.
- 2 The bead profile itself copies the shape of the rim and after inflation provides a perfect joint between them. Also protects the rim lips from damage.
- 3 The base tape is made of cotton. It absorbs the glue evenly, resulting in optimal bond between the rim and the tyre.
- 4 Inside airtight layer is made of a special butyl-rubber compound. Very low air permeability of this layer means long intervals between tyre inflations. Solid bond between the airtight layer and the tyre carcass means lower rolling resistance.
- 5 The carcass consists of two layers of rubber cord composite with reverse bearing cord orientation in each layer, joined and strengthened with CRCA. The carcass TPI varies from 60 to 210 for different tyre models.
- 6 The carcass plies are overlapped and joined underneath the tread, creating increased TPI (threads per inch) value and better tyre puncture resistance.
- 7 Puncture proof ply - made of rubber cord composite strengthened with CRCA.
- 8 Protective rubber ply - located underneath the tread, indicates also tyre wear and higher possibility of punctures when showing through the tread (only in specified models).
- 9 Tread - produced either with rubber compound of activated silica, silica or carbon black (specified for each model).



Tubular Clincher



Junior World Champion, World Cup winner, multiple Czech Cup winner and Czech National Champion.

Juniorský mistr světa, vítěz Světového poháru, několikanásobný vítěz Českého poháru a mistr České republiky.

RACING TYRE AND TUBELESS RACING TYRE

Tubeless Racing Tyres have an airtight rubber compound incorporated directly into the tyre carcass which holds the air pressure whereas conventional Racing Tyres use a separate inner tube. Our Tubeless Racing Tyres have a Vectran Puncture Barrier from bead to bead to increase tyre safety and to minimize air loss caused by sidewall damage during use.

Racing Tyre



1 Separate inner tube

2 VECTRAN™ for PUNCTURE BARRIER Under the tread protection

3 Tread – produced with rubber compound of activated silica

4 Protective rubber ply – located underneath the tread, indicates also tyre wear and higher possibility of punctures when showing through the tread (only in specified models).

5 The carcass plies are overlapped and joined underneath the tread, creating increased TPI (threads per inch) value and better tyre puncture resistance.

6 The carcass consists of two layers of rubber cord composite with reverse bearing cord orientation in each layer, joined and strengthened with CRCA.

7 Bead protection

8 Foldable aramid beads

9 Airtight rubber compound

10 VECTRAN™ for PUNCTURE BARRIER Bead to bead protection



Tubeless Racing Tyre

PRODUCTS

TYRES / TUBULARS
TUBULAR CLINCHERS

22

ROAD
CYCLING

40

WHEELCHAIR
SPORTS

32

TRIATHLON

42

ARTISTIC CYCLING
CYCLE-BALL

34

TRACK
CYCLING

44

GRAVEL

36

CYCLO-
CROSS

48

MTB

NEW



ROAD CYCLING



ROAD CYCLING

Gazprom-RusVelo
Professional Continental Team

MATERIALS & TECHNOLOGY

CARBON BLACK
TREAD COMPOUND

SPC SILICA
TREAD COMPOUND

CRCA

PUNCTURE
PROOF PLY

PROTECTIVE
RUBBER PLY

VECTRAN™ for
PUNCTURE BARRIER

SIDE
SKIN
PROTECTION

SIDEWALL PROTECTION
SP

ARAMID BEADS
FOLDABLE

TYRES	Size	Weight	Pressure	TPI Count	Colours
				Sidewall area / Under the tread	
CALIBRA	23-622 700×23C	205 g	6-10 bar (90-145 p.s.i.)	120 / 240	
CALIBRA 25	25-622 700×25C	235 g	6-9 bar (90-130 p.s.i.)	120 / 240	
CALIBRA PLUS	23-622 700×23C	180 g	6-10 bar (90-145 p.s.i.)	120 / 240	
CALIBRA PLUS 25	25-622 700×25C	210 g	6-9 bar (90-130 p.s.i.)	120 / 240	
CALIBRA PLUS 28	28-622 700×28C	235 g	6-8 bar (90-115 p.s.i.)	120 / 240	
CALIBRA LITE <150 g	23-622 700×23C	<150 g	6-10 bar (90-145 p.s.i.)	120 / 240	
COMTURA DUO 25	25-622 700×25C	225 g	6-9 bar (90-130 p.s.i.)	120 / 240	
COMTURA DUO 28	28-622 700×28C	250 g	6-8 bar (90-115 p.s.i.)	120 / 240	
COMTURA TRIO 25	25-622 700×25C	245 g	6-9 bar (90-130 p.s.i.)	120 / 240	
COMTURA TRIO 28	28-622 700×28C	275 g	6-8 bar (90-115 p.s.i.)	120 / 240	
COMTURA AERO 25	25-622 700×25C	215 g	6-9 bar (90-130 p.s.i.)	120 / 240	
COMTURA AERO 28	28-622 700×28C	240 g	6-8 bar (90-115 p.s.i.)	120 / 240	
COMTURA 3 TR 25	25-622 700×25C	270 g	5-7 bar (75-100 p.s.i.)	210 / 375	
COMTURA 3 TR 28	28-622 700×28C	290 g	4-6 bar (60-90 p.s.i.)	210 / 375	
COMTURA 4 TR 25	25-622 700×25C	260 g	5-7 bar (75-100 p.s.i.)	210 / 375	
COMTURA 4 TR 28	28-622 700×28C	280 g	4-6 bar (60-90 p.s.i.)	210 / 375	
COMTURA 5 TR 25	25-622 700×25C	280 g	5-7 bar (75-100 p.s.i.)	210 / 375	
COMTURA 5 TR 28	28-622 700×28C	300 g	4-6 bar (60-90 p.s.i.)	210 / 375	
STATUS EST 24	24-622 700×24C	265 g	6-9 bar (90-130 p.s.i.)	120 / 240	
TUBULARS					
S33 PRO	28" 21 mm	260 g	8-12 bar (115-175 p.s.i.)	60 / 90	
S33 PRO 24	28" 24 mm	310 g	6-8 bar (90-115 p.s.i.)	60 / 90	
HI-COMPOSITE CARBON	28" 23 mm	260 g	8-12 bar (115-175 p.s.i.)	120 / 240	
HI-COMPOSITE CARBON 25	28" 25 mm	300 g	6-8 bar (90-115 p.s.i.)	120 / 240	
HI-COMPOSITE CARBON 28	28" 28 mm	320 g	5-8 bar (70-115 p.s.i.)	120 / 240	
ELITE RIDE	28" 23 mm	250 g	8-15 bar (115-220 p.s.i.)	210 / 375	
ELITE RIDE 25	28" 25 mm	290 g	6-10 bar (90-145 p.s.i.)	210 / 375	
ELITE JET <160 g	28" 20 mm	<160 g	10-15 bar (145-220 p.s.i.)	210 / 375	
ELITE S3 <225 g	28" 23 mm	<225 g	8-15 bar (115-220 p.s.i.)	210 / 375	
ELITE S3 25 <265 g	28" 25 mm	<265 g	6-10 bar (90-145 p.s.i.)	210 / 375	
TUBULAR CLINCHERS					
C S33 PRO	28" 21 mm	335 g	8-12 bar (115-175 p.s.i.)	60 / 90	
C S33 PRO 24	28" 24 mm	385 g	6-8 bar (90-115 p.s.i.)	60 / 90	
C HI-COMPOSITE CARBON	28" 23 mm	335 g	8-12 bar (115-175 p.s.i.)	120 / 240	
C HI-COMPOSITE CARBON 25	28" 25 mm	375 g	6-8 bar (90-115 p.s.i.)	120 / 240	

Due to the use of natural materials, the tyre weight can fluctuate ±5 %. For tyres with the weight specified on the tyre label, this weight is guaranteed as the highest. We reserve the right to carry out changes.

» COMTURA 3 TR



Colours ■



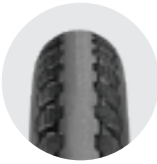
Tubeless ready all purpose road tyre for those who cannot be bothered with inner tubes anymore. Comtura 3 TR is another evolutionary step in the Comtura product line. The unique carcass construction together with the protection layers allow for low tyre pressures which provide greater comfort and excellent grip.

VECTRAN™ for PUNCTURE BARRIER protects the tyre from bead to bead and provides the best possible protection under the tread and in the sidewalls. Danger of punctures is significantly reduced and pinch flats are eliminated. True tyre for tubeless newcomers fans who will be surprised by achieved mileage.



TYRES	SIZE	WEIGHT	PRESSURE	TPI Count <small>Sidewall area / Under the tread</small>
COMTURA 3 TR 25	25-622 700×25C	270 g	5-7 bar (75-100 p.s.i.)	210 / 375
COMTURA 3 TR 28	28-622 700×28C	290 g	4-6 bar (60-90 p.s.i.)	210 / 375

» COMTURA 4 TR



Colours ■ ■ ■



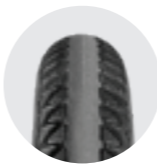
Tubeless ready road tyre for those who cannot be bothered with inner tubes anymore.

Comtura 4 TR is protected very well against flats by VECTRAN™ for PUNCTURE BARRIER under the tread area. Great ride comfort and excellent mileage provided by this tyre should be a holy grail for each tubeless fan.



TYRES	SIZE	WEIGHT	PRESSURE	TPI Count <small>Sidewall area / Under the tread</small>
COMTURA 4 TR 25	25-622 700×25C	260 g	5-7 bar (75-100 p.s.i.)	210 / 375
COMTURA 4 TR 28	28-622 700×28C	280 g	4-6 bar (60-90 p.s.i.)	210 / 375

» COMTURA 5 TR

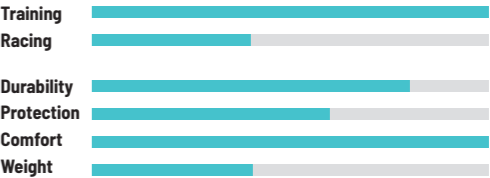


Colours ■ ■ ■



Tubeless ready road tyre for those who cannot be bothered with inner tubes anymore.

Comtura 5 TR was designed to provide tubeless fans with very reliable tyre, reasonable mileage and good price. Although this model is our entry level tubeless tyre it is definitely pleasure to ride this tyre.



TYRES	SIZE	WEIGHT	PRESSURE	TPI Count <small>Sidewall area / Under the tread</small>
COMTURA 5 TR 25	25-622 700×25C	280 g	5-7 bar (75-100 p.s.i.)	210 / 375
COMTURA 5 TR 28	28-622 700×28C	300 g	4-6 bar (60-90 p.s.i.)	210 / 375

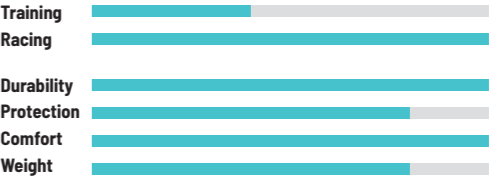
» COMTURA DUO



Colours ■ ■ ■ ■ ■



The most universal tyre model in the Comtura line. Comtura Duo is a racing performance tyre with excellent puncture resistance over additional mileage. Performs wherever, whenever to your highest expectations. VECTRAN™ for PUNCTURE BARRIER under the tyre tread not only provides the best possible puncture protection but also ensures cornering and stability.



TYRES	SIZE	WEIGHT	PRESSURE	TPI Count <small>Sidewall area / Under the tread</small>
COMTURA DUO 25	25-622 700×25C	225 g	6-9 bar (90-130 p.s.i.)	120 / 240
COMTURA DUO 28	28-622 700×28C	250 g	6-8 bar (90-115 p.s.i.)	120 / 240

» COMTURA TRIO



Colours ■



VECTRAN™ for
PUNCTURE BARRIER

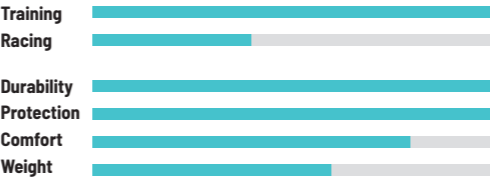
PROTECTIVE
RUBBER PLY

SPC SILICA
TREAD COMPOUND

SIDEL WALL PROTECTION
SP

ARAMID BEADS
FOLDABLE

The most durable tyre model in the Comtura line. We transferred the benefits of our powerful Sidewall Protection on MTB tubulars into the lighter application used for road tyre Comtura Trio. Specially formulated slippery sidewall strips protect the most vulnerable part of a tyre. VECTRAN™ for PUNCTURE BARRIER under the tyre tread not only provides the best possible puncture protection but also ensures cornering and stability.



TYRES	SIZE	WEIGHT	PRESSURE	TPI Count <small>Sidewall area / Under the tread</small>
COMTURA TRIO 25	25-622 700×25C	245 g	6-9 bar (90-130 p.s.i.)	120 / 240
COMTURA TRIO 28	28-622 700×28C	275 g	6-8 bar (90-115 p.s.i.)	120 / 240



» COMTURA AERO



Colours ■



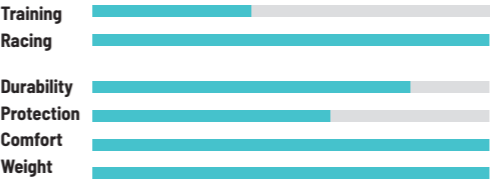
VECTRAN™ for
PUNCTURE BARRIER

PROTECTIVE
RUBBER PLY

SPC SILICA
TREAD COMPOUND

ARAMID BEADS
FOLDABLE

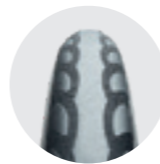
The lightest and fastest tyre model in the Comtura line. Besides being one of the lightest tyres on the market, it still offers great mileage and great puncture protection. Comtura Aero is a racing performance tyre with amazing reliability. VECTRAN™ for PUNCTURE BARRIER under the tyre tread not only provides the best possible puncture protection but also ensures cornering and stability.



TYRES	SIZE	WEIGHT	PRESSURE	TPI Count <small>Sidewall area / Under the tread</small>
COMTURA AERO 25	25-622 700×25C	215 g	6-9 bar (90-130 p.s.i.)	120 / 240
COMTURA AERO 28	28-622 700×28C	240 g	6-8 bar (90-115 p.s.i.)	120 / 240



» CALIBRA



Colours ■



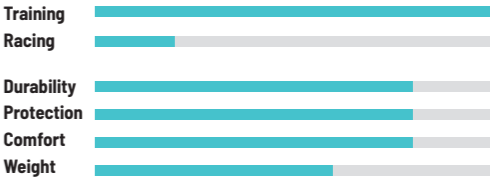
PUNCTURE
PROOF PLY

SPC SILICA
TREAD COMPOUND

SIDE
SKIN
PROTECTION

ARAMID BEADS
FOLDABLE

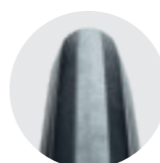
All-around racing/training tyre. Bead to bead sidewall protection and puncture proof ply under the tread effectively decrease the possibility of flats. Fine tread pattern together with activated silica tread compound provide excellent adhesion on wet or dry pavement.



TYRES	SIZE	WEIGHT	PRESSURE	TPI Count <small>Sidewall area / Under the tread</small>
CALIBRA	23-622 700×23C	205 g	6-10 bar (90-145 p.s.i.)	120 / 240
CALIBRA 25	25-622 700×25C	235 g	6-9 bar (90-130 p.s.i.)	120 / 240



» CALIBRA PLUS



Colours ■

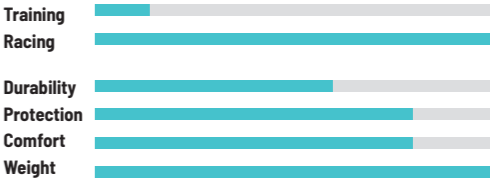


PUNCTURE
PROOF PLY

SPC SILICA
TREAD COMPOUND

ARAMID BEADS
FOLDABLE

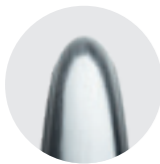
A very lightweight road racing tyre. Slick tread centre with side grip pattern for extra speed and excellent riding properties on wet or dry pavement. Good puncture resistance.



TYRES	SIZE	WEIGHT	PRESSURE	TPI Count <small>Sidewall area / Under the tread</small>
CALIBRA PLUS	23-622 700×23 C	180 g	6-10 bar (90-145 p.s.i.)	120 / 240
CALIBRA PLUS 25	25-622 700×25C	210 g	6-9 bar (90-130 p.s.i.)	120 / 240
CALIBRA PLUS 28	28-622 700×28C	235 g	6-8 bar (90-115 p.s.i.)	120 / 240



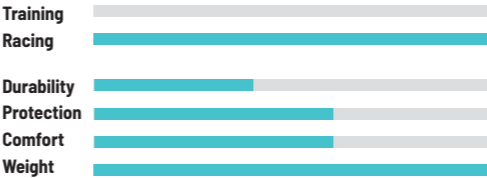
» CALIBRA LITE



Colours ■



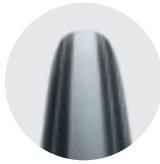
Guaranteed specified weight. Intended for time trials and road races with good surface. In spite of super low weight this tyre has good puncture resistance. Slick tread contributes to low rolling resistance.



TYRES	SIZE	WEIGHT	PRESSURE	TPI Count <small>Sidewall area / Under the tread</small>
CALIBRA LITE <150 g	23-622 700×23C	<150 g*	6-10 bar (90-145 p.s.i.)	120 / 240

*For tyres with weight specified on the tyre label, this weight is guaranteed as the highest.

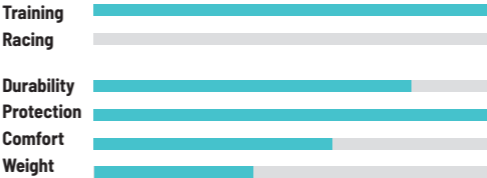
» STATUS EST



Colours ■



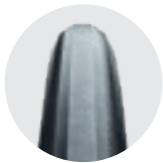
Tyre model with classic chevron tyre treadpattern. Good performance and price ratio.



TYRES	SIZE	WEIGHT	PRESSURE	TPI Count <small>Sidewall area / Under the tread</small>
STATUS EST 24	24-622 700×24C	265 g	6-9 bar (90-130 p.s.i.)	120 / 240



» S33 PRO



Colours



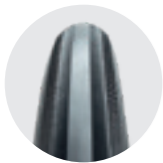
Very popular training tyre for all around use with higher inflation pressure.



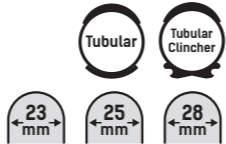
TUBULARS	SIZE	WEIGHT	PRESSURE	TPI Count <small>Sidewall area / Under the tread</small>
S33 PRO	28" 21mm	260 g	8-12 bar (115-175 p.s.i.)	60 / 90
S33 PRO 24	28" 24 mm	310 g	6-8 bar (90-115 p.s.i.)	60 / 90
TUBULAR CLINCHERS				
C S33 PRO	28" 21mm	335 g	8-12 bar (115-175 p.s.i.)	60 / 90
C S33 PRO 24	28" 24 mm	385 g	6-8 bar (90-115 p.s.i.)	60 / 90

Rim size 28" 700 C E.T.R.T.O. 622-(13-15) mm

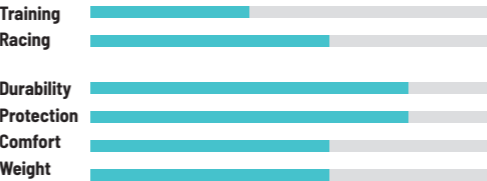
» HI-COMPOSITE CARBON



Colours



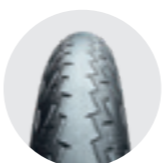
Application of composite puncture proof ply and high composite carbon tread compound made possible to use thinner tread and still maintain high mileage. Thinner tread also lowers rolling resistance while the tyre is maintaining ideal shock absorption properties and high puncture resistance.



TUBULARS	SIZE	WEIGHT	PRESSURE	TPI Count <small>Sidewall area / Under the tread</small>
HI-COMPOSITE CARBON	28" 23 mm	260 g	8-12 bar (115-175 p.s.i.)	120 / 240
HI-COMPOSITE CARBON 25	28" 25 mm	300 g	6-8 bar (90-115 p.s.i.)	120 / 240
HI-COMPOSITE CARBON 28	28" 28 mm	320 g	5-8 bar (70-115 p.s.i.)	120 / 240
TUBULAR CLINCHERS				
C HI-COMPOSITE CARBON	28" 23 mm	335 g	8-12 bar (115-175 p.s.i.)	120 / 240
C HI-COMPOSITE CARBON 25	28" 25 mm	375 g	6-8 bar (90-115 p.s.i.)	120 / 240

Rim size 28" 700 C E.T.R.T.O. 622-(13-15) mm

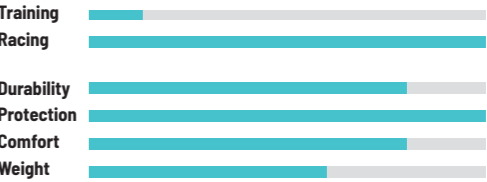
» ELITE RIDE



Colours



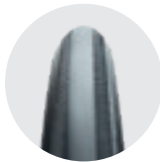
This tyre model provides comfortable, smooth and fast ride with minimum of vibrations even in the most demanding conditions of road cycling. Wide tyre tread overlapping the sidewall and the puncture proof ply in the middle of the tread effectively decrease the possibility of flats.



TUBULARS	SIZE	WEIGHT	PRESSURE	TPI Count <small>Sidewall area / Under the tread</small>
ELITE RIDE	28" 23 mm	250 g	8-15 bar (115-220 p.s.i.)	210 / 375
ELITE RIDE 25	28" 25 mm	290 g	6-10 bar (90-145 p.s.i.)	210 / 375



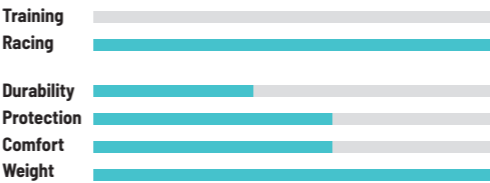
» ELITE JET



Colours



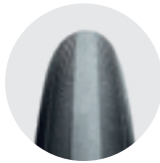
Guaranteed specified weight. Intended for time trials and road races with good surface. In spite of super low weight, this tyre has reasonable puncture resistance and mileage. Possibility of very high inflation pressure, resulting in absolute minimum rolling resistance. VECTRAN™ for PUNCTURE BARRIER under the tyre tread not only provides the best possible puncture protection but also ensures cornering and stability.



TUBULARS	SIZE	WEIGHT	PRESSURE	TPI Count <small>Sidewall area / Under the tread</small>
ELITE JET <160 g	28" 20 mm	<160 g	10–15 bar (145–220 p.s.i.)	210 / 375

*For tyres with weight specified on the tyre label, this weight is guaranteed as the highest.

» ELITE S3



Colours



Guaranteed specified weight. In spite of low weight, this tyre has very good puncture resistance and mileage. Elite S3 <225 g is an enhanced successor of the Tufo's best-seller S3 Lite <215 g. In addition to improved tread pattern, it has a new carcass with higher 210/375 TPI count and wider base tape. The result is a supple ride and excellent handling. VECTRAN™ for PUNCTURE BARRIER under the tyre tread not only provides the best possible puncture protection but also ensures cornering and stability.



TUBULARS	SIZE	WEIGHT	PRESSURE	TPI Count <small>Sidewall area / Under the tread</small>
ELITE S3 <225 g	28" 23 mm	<225 g	8–15 bar (115–220 p.s.i.)	210 / 375
ELITE S3 25 <265 g	28" 25 mm	<265 g	6–10 bar (90–145 p.s.i.)	210 / 375

*For tyres with weight specified on the tyre label, this weight is guaranteed as the highest.





Petr Vabrousek
2 × World Cup Winner in long distance Triathlon (2006 a 2011)
81 × TOP 10 in IRONMAN WTC races (world record)
21 × TOP 10 in CHALLENGE races (world record)
15 × in series professional participation in Hawaii
47 × wins in Ironman races
13 × National Champion in long distance Triathlon
205 × finished Ironman races
Winner of Marathon and 100 km ultra in Antarctica in record times (2013)
Winner of North Pole Marathon 2015
Participated on Marathon Des Sables 2016 (21st place)
Winner of Ultraman Florida 2018 and Ultra 515 Czech (2019, 2020)
World record holder on Ultraman tracks 20:56
3rd place MS Ultraman Hawaii 2018
2 × second place at World Marathon Challenge (2017, 2019)

MATERIALS & TECHNOLOGY

CARBON BLACK
TREAD COMPOUND

SPC SILICA
TREAD COMPOUND

NAN SILICA
TREAD COMPOUND

CRCA

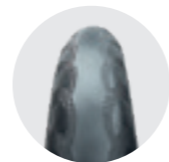
PUNCTURE
PROOF PLY

PROTECTIVE
RUBBER PLY

TRIATHLON

TUBULARS	Size	Weight	Pressure	TPI Count Sidewall area / Under the tread	Colours
ELITE PULSE	28" 22 mm	230 g	8-15 bar (115-220 p.s.i.)	210 / 375	■
ELITE PULSE 25	28" 25 mm	280 g	6-10 bar (90-145 p.s.i.)	210 / 375	■
S3 26" LITE <200 g	26" 21 mm	<200 g	8-15 bar (115-220 p.s.i.)	120 / 240	■
S3 LITE <215 g	28" 21 mm	<215 g	8-15 bar (115-220 p.s.i.)	120 / 240	■

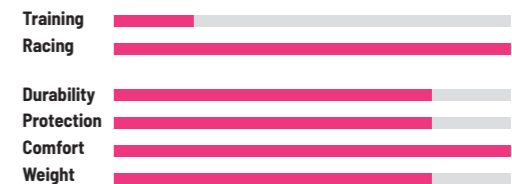
» ELITE PULSE



Colours ■

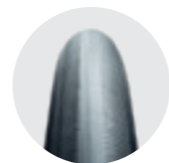


The top of the line model for wide range of uses. Featuring ideal round tread profile and smooth tread-sidewall transition, this model has minimal aerodynamic head-on resistance. Fine tread pattern together with specially formulated tread compound provide excellent adhesion on wet or dry pavement and low rolling resistance.



TUBULARS	SIZE	WEIGHT	PRESSURE	TPI Count Sidewall area / Under the tread
ELITE PULSE	28" 22 mm	230 g	8-15 bar (115-220 p.s.i.)	210 / 375
ELITE PULSE 25	28" 25 mm	280 g	6-10 bar (90-145 p.s.i.)	210 / 375

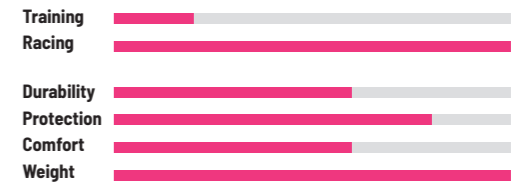
» S3 LITE



Colours ■



Guaranteed specified weight. For use on smooth pavement. Narrow tyre profile minimizes head on aerodynamic resistance. High inflation pressure decreases the rolling resistance significantly.



TUBULARS	SIZE	WEIGHT	PRESSURE	TPI Count Sidewall area / Under the tread
S3 26" LITE <200 g	26" 21 mm	<200 g	8-15 bar (115-220 p.s.i.)	120 / 240
S3 LITE <215 g	28" 21 mm	<215 g	8-15 bar (115-220 p.s.i.)	120 / 240

*For tyres with weight specified on the tyre label, this weight is guaranteed as the highest.



Jirka JEZEK

The six-time Paralympic winner and six-time world champion. The most successful cyclist in Paralympic history. Šestinásobný paralympijský vítěz a šestinásobný mistr světa. Nejúspěšnější cyklista paralympijské historie.

MATERIALS & TECHNOLOGY

CARBON BLACK
TREAD COMPOUND

SPC SILICA
TREAD COMPOUND

NAN SILICA
TREAD COMPOUND

CRCA

PUNCTURE
PROOF PLY

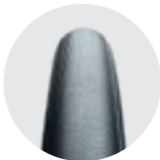
PROTECTIVE
RUBBER PLY

TRACK
CYCLING

TUBULARS	Size	Weight	Pressure	TPI Count Sidewall area / Under the tread	Colours
S3 PRO	28" 21mm	195 g	8-15 bar (115-220 p.s.i.)	60 / 90	■ ■ ■
ELITE <125 g	28" 19mm	<125 g	10-15 bar (145-220 p.s.i.)	210 / 315	■ ■ ■
ELITE <135 g	28" 22mm	<135 g	10-15 bar (145-220 p.s.i.)	210 / 315	■ ■ ■
ELITE <150 g	28" 19mm	<150 g	10-15 bar (145-220 p.s.i.)	210 / 315	■ ■ ■
ELITE <160 g	28" 22mm	<160 g	10-15 bar (145-220 p.s.i.)	210 / 315	■ ■ ■

Due to the use of natural materials, the tyre weight can fluctuate ±5 %. For tyres with the weight specified on the tyre label, this weight is guaranteed as the highest. We reserve the right to carry out changes.

» S3 PRO



Colours ■ ■ ■



CARBON BLACK
TREAD COMPOUND

TUBULARS	SIZE	WEIGHT	PRESSURE	TPI Count Sidewall area / Under the tread
S3 PRO	28" 21mm	195 g	8-15 bar (115-220 p.s.i.)	60 / 90



Ideal track training tyre. High inflation pressures, excellent traction on all types of surfaces and good mileage.



» ELITE



Colours ■ ■ ■



ELITE <125 g, ELITE <135 g
CARBON BLACK
TREAD COMPOUND

ELITE <150 g, ELITE <160 g
NAN SILICA
TREAD COMPOUND

TUBULARS	SIZE	WEIGHT	PRESSURE	TPI Count Sidewall area / Under the tread
ELITE <125 g	28" 19mm	<125 g	10-15 bar (145-220 p.s.i.)	210 / 315
ELITE <135 g	28" 22mm	<135 g	10-15 bar (145-220 p.s.i.)	210 / 315
ELITE <150 g	28" 19mm	<150 g	10-15 bar (145-220 p.s.i.)	210 / 315
ELITE <160 g	28" 22mm	<160 g	10-15 bar (145-220 p.s.i.)	210 / 315



Guaranteed specified weight. Excellent traction on all track surfaces. Sufficient mileage for intensive racing. Suitable for all track disciplines.



*For tyres with weight specified on the tyre label, this weight is guaranteed as the highest.



CYCLO-CROSS

MATERIALS & TECHNOLOGY

CARBON BLACK
TREAD COMPOUND

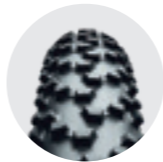
OIL SILICA
TREAD COMPOUND

CRCA

TUBULARS	Size	Weight	Pressure	TPI Count <small>Sidewall area / Under the tread</small>	Colours
CUBUS 33 SG	28" 33 mm	400 g	max. 4.5 bar (65 p.s.i.)	60 / 90	■
FLEXUS CUBUS 33 SG	28" 33 mm	350 g	max. 3 bar (45 p.s.i.)	210 / 315	■
PRIMUS 33 SG	28" 33 mm	400 g	max. 4.5 bar (65 p.s.i.)	60 / 90	■
FLEXUS PRIMUS 33 SG	28" 33 mm	350 g	max. 3 bar (45 p.s.i.)	210 / 315	■
DRY PLUS	28" 32 mm	370 g	max. 4.5 bar (65 p.s.i.)	60 / 90	■
FLEXUS DRY PLUS	28" 32 mm	340 g	max. 4.5 bar (65 p.s.i.)	210 / 315	■

Due to the use of natural materials, the tyre weight can fluctuate ±5 %. For tyres with the weight specified on the tyre label, this weight is guaranteed as the highest. We reserve the right to carry out changes.

» CUBUS SG



Colours ■



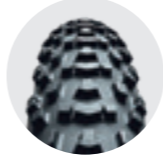
CUBUS 33 SG
CARBON BLACK
TREAD COMPOUND

FLEXUS CUBUS 33 SG
OIL SILICA
TREAD COMPOUND

TUBULARS	SIZE	WEIGHT	PRESSURE	TPI Count <small>Sidewall area / Under the tread</small>
CUBUS 33 SG	28" 33 mm	400 g	max. 4.5 bar (65 p.s.i.)	60 / 90
FLEXUS CUBUS 33 SG	28" 33 mm	350 g	max. 3 bar (45 p.s.i.)	210 / 315

Flexus Cubus 33 SG is the universal model suitable for most conditions including the most difficult cyclocross terrains. In spite of the aggressive tread pattern, this model has very low rolling resistance and can be used also on dry terrain and hard pack. Specially formulated soft tread compound enhances the tyre shock absorption.

» PRIMUS SG



Colours ■



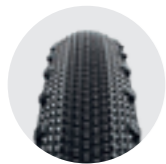
PRIMUS 33 SG
CARBON BLACK
TREAD COMPOUND

FLEXUS PRIMUS 33 SG
OIL SILICA
TREAD COMPOUND

TUBULARS	SIZE	WEIGHT	PRESSURE	TPI Count <small>Sidewall area / Under the tread</small>
PRIMUS 33 SG	28" 33 mm	400 g	max. 4.5 bar (65 p.s.i.)	60 / 90
FLEXUS PRIMUS 33 SG	28" 33 mm	350 g	max. 3 bar (45 p.s.i.)	210 / 315

Flexus Primus 33 SG is the top of the line model suitable for most conditions except deep mud. Unique new self cleaning tread pattern ensures excellent traction, special side knobs provide for stable cornering. Specially formulated soft tread compound enhances the tyre shock absorption.

» DRY PLUS



Colours



Flexus Dry Plus is model suitable specially for dry and sandy, also for snow and frozen terrain. Fine tread pattern with special side knobs make the ride light, with sure handling in corners. Specially formulated soft tread compound enhances the tyre shock absorption. Extremely low weight, high TPI count, good resistance against flats.



TUBULARS	SIZE	WEIGHT	PRESSURE	TPI Count <small>Sidewall area / Under the tread</small>
DRY PLUS	28" 32 mm	370 g	max. 4.5 bar (65 p.s.i.)	60 / 90
FLEXUS DRY PLUS	28" 32 mm	340 g	max. 4.5 bar (65 p.s.i.)	210 / 315

Martin BINA
Junior World Champion, World Cup winner, multiple Czech Cup winner and Czech National Champion.
Juniorský mistr světa, vítěz Světového poháru, několikanásobný vítěz Českého poháru a mistr České republiky.





Leo Pekka TAHTI
The world's fastest wheelchair
racer, record holder in 100 m event.
Nejrychlejší závodník na invalidním
vozíku na světě, držitel rekordu na 100 m.

MATERIALS & TECHNOLOGY

CARBON BLACK
TREAD COMPOUND

SPC SILICA
TREAD COMPOUND

BIC SILICA
TREAD COMPOUND

CRCA

PUNCTURE
PROOF PLY

PROTECTIVE
RUBBER PLY

WHEELCHAIR
SPORTS

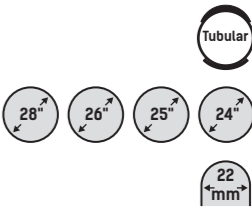
TUBULARS	Size	Weight	Pressure	TPI Count Sidewall area / Under the tread	Colours
MS3 28"	28" 22 mm	330 g	12-16 bar (175-230 p.s.i.)	60 / 120	■
MS3 26"	26" 22 mm	315 g	12-16 bar (175-230 p.s.i.)	60 / 120	■
MS3 25"	25" 22 mm	315 g	12-16 bar (175-230 p.s.i.)	60 / 120	■
MS3 24"	24" 22 mm	300 g	12-16 bar (175-230 p.s.i.)	60 / 120	■
S3 20" LITE <100 g	20" 18 mm	<100 g	10-15 bar (145-220 p.s.i.)	210 / 315	■
S3 26" ROAD	26" 26 mm	230 g	8-15 bar (115-220 p.s.i.)	210 / 375	■
S3 24" ROAD	24" 26 mm	220 g	8-15 bar (115-220 p.s.i.)	210 / 375	■
S3 22" ROAD	22" 26 mm	210 g	8-15 bar (115-220 p.s.i.)	210 / 375	■
S3 20" ROAD	20" 26 mm	200 g	8-15 bar (115-220 p.s.i.)	210 / 375	■

Due to the use of natural materials, the tyre weight can fluctuate ±5 %. For tyres with the weight specified on the tyre label, this weight is guaranteed as the highest.
We reserve the right to carry out changes.

» MS3



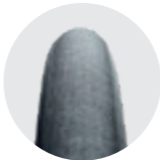
Colours ■



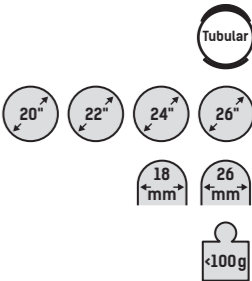
Tubular tyre for clincher rim of specific dimensions. The tyre has specially constructed sidewall and after inflation it holds against the rim lips and will not slip on the rim. The tyre sits mostly inside of the rim, protecting it from a side impact damage. No need to glue on the rim.

TUBULARS	SIZE	WEIGHT	PRESSURE	TPI Count Sidewall area / Under the tread
MS3 28"	28" 22 mm	330 g	12-16 bar (175-230 p.s.i.)	60 / 120
Rim size 28" E.T.R.T.O. 622x21 mm				
MS3 26"	26" 22 mm	315 g	12-16 bar (175-230 p.s.i.)	60 / 120
Rim size 26" E.T.R.T.O. 590x21 mm				
MS3 25"	25" 22 mm	315 g	12-16 bar (175-230 p.s.i.)	60 / 120
Rim size 25" E.T.R.T.O. 559x21 mm				
MS3 24"	24" 22 mm	300 g	12-16 bar (175-230 p.s.i.)	60 / 120
Rim size 24" E.T.R.T.O. 540x21 mm				

» S3



Colours ■



Guaranteed specified weight for LITE model - intended for a front wheel of racing wheelchairs. ROAD models are for wheelchairs and kick scooters.

TUBULARS	SIZE	WEIGHT	PRESSURE	TPI Count Sidewall area / Under the tread
S3 20" LITE <100 g	20" 18 mm	<100 g	10-15 bar (145-220 p.s.i.)	210 / 315
S3 26" ROAD	26" 26 mm	230 g	8-15 bar (115-220 p.s.i.)	210 / 375
S3 24" ROAD	24" 26 mm	220 g	8-15 bar (115-220 p.s.i.)	210 / 375
S3 22" ROAD	22" 26 mm	210 g	8-15 bar (115-220 p.s.i.)	210 / 375
S3 20" ROAD	20" 26 mm	200 g	8-15 bar (115-220 p.s.i.)	210 / 375



Martina STEPANKOVA
3-times Artistic Cycling World
Champion in the years 1998, 1999 and 2002.
Trojnásobná mistryně světa v krasojždě
v letech 1998, 1999 a 2002.

Peter JIRICEK
3-times Cycle Ball World Champion
in the years 1999, 2002 and 2009.
Trojnásobný mistr světa v kolové v letech 1999, 2002 a 2009.

MATERIALS & TECHNOLOGY

CARBON BLACK
TREAD COMPOUND

SPC SILICA
TREAD COMPOUND

BIC SILICA
TREAD COMPOUND

CRCA

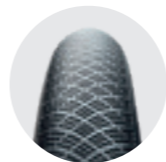
PUNCTURE
PROOF PLY

PROTECTIVE
RUBBER PLY

ARTISTIC
CYCLING
CYCLE-BALL

TUBULARS	Size	Weight	Pressure	TPI Count Sidewall area / Under the tread	Colours
ARTISTIC CYCLING 26×1	26×1"	260 g	8-16 bar (115-230 p.s.i.)	210 / 315	■
ARTISTIC CYCLING 26×1 ^{1/8}	26×1 ^{1/8} "	300 g	8-16 bar (115-230 p.s.i.)	210 / 315	■
B3 26×1"	26×1"	350 g	8-16 bar (115-230 p.s.i.)	60 / 120	■ ■ ■ ■ ■
B3 24×1"	24×1"	320 g	8-16 bar (115-230 p.s.i.)	60 / 120	■ ■ ■ ■ ■
B3 22×1"	22×1"	290 g	8-16 bar (115-230 p.s.i.)	60 / 120	■ ■ ■ ■ ■
B3 20×1"	20×1"	260 g	8-16 bar (115-230 p.s.i.)	60 / 120	■ ■ ■ ■ ■
B33 26×1 ^{1/8}	26×1 ^{1/8} "	430 g	8-16 bar (115-230 p.s.i.)	60 / 120	■ ■ ■ ■ ■

» ARTISTIC CYCLING



Colours ■



Tubular

26"

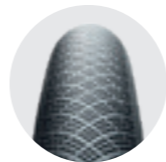
1"

1 1/8"

Specially developed tubular model for artistic cycling. The bicycle is very easy and smoothly to maneuver due to the round tread profile. The optimal tread compound provides excellent adhesion on all types of surfaces. This tubular will help you to master the most difficult exercises.

TUBULARS	SIZE	WEIGHT	PRESSURE	TPI Count Sidewall area / Under the tread
ARTISTIC CYCLING 26×1	26×1"	260 g	8-16 bar (115-230 p.s.i.)	210 / 315
ARTISTIC CYCLING 26×1 ^{1/8}	26×1 ^{1/8} "	300 g	8-16 bar (115-230 p.s.i.)	210 / 315

» B



Colours ■ ■ ■ ■ ■



Tubular

20"

22"

24"

26"

1"

1 1/8"

Optimally dimensioned tread compound together with ideal tread pattern guarantee excellent adhesion on all types of surfaces. Matter of course is long tubular life and exceptional riding properties. Thanks to a special textile protection of the sidewall and reinforcement of the tread part, these tubulars are exceptionally resistant to punctures and damages. Proven Cycle-Ball champion.

TUBULARS	SIZE	WEIGHT	PRESSURE	TPI Count Sidewall area / Under the tread
B3 26×1"	26×1"	350 g	8-16 bar (115-230 p.s.i.)	60 / 120
B3 24×1"	24×1"	320 g	8-16 bar (115-230 p.s.i.)	60 / 120
B3 22×1"	22×1"	290 g	8-16 bar (115-230 p.s.i.)	60 / 120
B3 20×1"	20×1"	260 g	8-16 bar (115-230 p.s.i.)	60 / 120
B33 26×1 ^{1/8} "	26×1 ^{1/8} "	430 g	8-16 bar (115-230 p.s.i.)	60 / 120

*These models are with original tread pattern - not pictured here.



Dan THOW

I live and ride in the cycling epicenter of America with most all the local pros and serious cyclists in southern California just north of L.A. I have placed top 10 in the Hillclimb World Championships and won the California State 2 man TTT.

I push my tires to their edge and have become familiar with many different tires. The Gravel Thunders are at the top of my list for offroad speed, control, style, and fun!

Žiji a jezdím v cyklistickém epicentru Ameriky, se všemi místními profesionály a seriózními cyklisty v Jižní Kalifornii severně od L.A. Umístil jsem se v top 10 na mistrovství světa Hillclimb a vyhrál jsem TTT státu Kalifornie. S pneumatikami se dostávám na jejich skutečnou hranu a mám jich vyzkoušených velké množství. Gravel Thundero je na prvním místě mého seznamu pro jejich rychlost, ovládání, styl a zábavu v terénu!

MATERIALS & TECHNOLOGY



GRAVEL

TYRES	Size	Weight	Pressure	TPI Count Sidewall area / Under the tread	Colours
GRAVEL THUNDERO	40-622 (700x40C)	430 g	2-5 bar (30-70 p.s.i.)	210 / 375	
GRAVEL SPEEDERO	40-622 (700x40C)	430 g	2-5 bar (30-70 p.s.i.)	210 / 375	
GRAVEL SWAMPERO	40-622 (700x40C)	430 g	2-5 bar (30-70 p.s.i.)	210 / 375	

» GRAVEL THUNDERO



A UNIVERSAL TYRE FOR THOSE WHO DON'T WANT TO THINK ABOUT WHERE TO GO.

The Thundero can do it all. The middle part of the tread, composed of tightly packed cubes, creates speed and surprisingly quiet rolling with three indented rows of knobs on the outer tread, which bite literally into any surface. This provides excellent grip even on unpaved surfaces and allows you to turn sharply. The wide tread and the durable flexible Jubena layer covering the sidewalls protect the tyre from receiving damage from stones. A Puncture proof ply under the tread minimizes the risk of punctures and contributes to the overall reliability of the tyre. The high TPI casing construction, together with the soft tread compound, smoothes out any surface and prevents the tyre from bouncing on uneven surfaces. The Thundero is also made to be long lasting and guarantees high mileage.



TYRES	SIZE	WEIGHT	PRESSURE	TPI Count Sidewall area / Under the tread
GRAVEL THUNDERO	40-622 (700x40C)	430 g	2-5 bar (30-70 p.s.i.)	210/375

» GRAVEL SPEEDERO



MADE FOR SPEED. IT DOESN'T MATTER IF YOU RIDE ON ASPHALT, COBBLES, FOREST PATHS, SAND, GRASS OR GRAVEL.

The Speedero always provides uncompromising acceleration and ease of riding with plenty of grip and cornering safety. The wide tread and the durable flexible Jubena layer covering the sidewalls, protect the tyre from receiving damage from stones. A Puncture proof ply under the tread minimizes the risk of punctures and contributes to the overall reliability of the tyre. The high TPI casing construction, together with the soft tread compound, smoothes out any surface and prevents the tyre from bouncing on uneven surfaces. The Speedero is also made to be long lasting and guarantees high mileage.



TYRES	SIZE	WEIGHT	PRESSURE	TPI Count Sidewall area / Under the tread
GRAVEL SPEEDERO	40-622 (700x40C)	430 g	2-5 bar (30-70 p.s.i.)	210/375

» GRAVEL SWAMPERO



Colours

NEW



THE PERFECT TYRE FOR THE MOST CHALLENGING CONDITIONS. NO NEED TO WORRY ABOUT THE WEATHER.

A directional arrow-shaped tread pattern with overlapping central knobs guarantees fast rolling, exceptional grip and self-cleaning properties. The wide tread and the durable flexible Jubena layer covering the sidewalls protect the tyre from receiving damage from stones. A Puncture proof ply under the tread minimizes the risk of punctures and contributes to the overall reliability of the tyre. The high TPI casing construction, together with the soft tread compound, smoothes out any surface and prevents the tyre from bouncing on uneven surfaces. The Swampero is also made to be long lasting and guarantees high mileage.

TYRES	SIZE	WEIGHT	PRESSURE	TPI Count <small>Sidewall area / Under the tread</small>
GRAVEL SWAMPERO	40-622 (700x40C)	430 g	2-5 bar (30-70 p.s.i.)	210/375

Dan THOW
Tufo Ambassador in Ventura
in Southern California.
Tufo Ambassador ve Ventura
v Jižní Kalifornii.





MTB



Tomas PAPRSTKA
Junior World Champion in cyclocross Tabor 2010.
Successful also in MTB, he won several medals at the Czech national championships.

Juniorský mistr světa v cyklokrosu z roku 2010 v Táboře. Úspěšný i v MTB, získal několik medailí na mistrovství ČR.

MTB

TYRES	Size	Weight	Pressure	TPI Count Sidewall area / Under the tread	Colours
XC11 TR 27.5"	27.5×2.25"	610 g	2-3.5 bar (30-50 p.s.i.)	210 / 375	
XC11 TR 29"	29×2.25"	650 g	2-3.5 bar (30-50 p.s.i.)	210 / 375	
XC12 TR 29"	29×2.25"	650 g	2-3.5 bar (30-50 p.s.i.)	210 / 375	
XC13 TR 29"	29×2.25"	650 g	2-3.5 bar (30-50 p.s.i.)	210 / 375	
XC14 TR 29"	29×2.25"	650 g	2-3.5 bar (30-50 p.s.i.)	210 / 375	

NEW

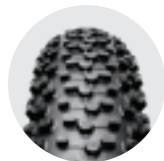
TUBULARS	Size	Weight	Pressure	TPI Count Sidewall area / Under the tread	Colours
XC2 29" PLUS	29×2.00"	515 g	max. 3 bar (45 p.s.i.)	210 / 375	
XC2 29" PLUS SP	29×2.00"	545 g	max. 3 bar (45 p.s.i.)	210 / 375	
XC2 27.5" PLUS	27.5×2.00"	480 g	max. 3 bar (45 p.s.i.)	210 / 375	
XC2 27.5" PLUS SP	27.5×2.00"	510 g	max. 3 bar (45 p.s.i.)	210 / 375	
XC2 26" PLUS	26×2.00"	465 g	max. 3 bar (45 p.s.i.)	210 / 375	
XC2 26" PLUS SP	26×2.00"	495 g	max. 3 bar (45 p.s.i.)	210 / 375	
XC4 29" SP	29×2.20"	610 g	max. 3 bar (45 p.s.i.)	210 / 375	
XC4 26" SP	26×2.20"	560 g	max. 3 bar (45 p.s.i.)	210 / 375	
XC5 29"	29×2.00"	595 g	max. 3 bar (45 p.s.i.)	120 / 180	
XC5 27.5"	27.5×2.00"	560 g	max. 3 bar (45 p.s.i.)	120 / 180	
XC6 29" SP	29×2.20"	610 g	max. 3 bar (45 p.s.i.)	210 / 375	
XC6 27.5" SP	27.5×2.20"	580 g	max. 3 bar (45 p.s.i.)	210 / 375	

Due to the use of natural materials, the tyre weight can fluctuate ±5 %. For tyres with the weight specified on the tyre label, this weight is guaranteed as the highest. We reserve the right to carry out changes.

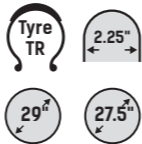
MATERIALS & TECHNOLOGY



» XC11 TR



Colours  



Tubeless ready all purpose MTB tyre intended for XC and marathons. Thanks to the VECTRAN™ PUNCTURE BARRIER, the tyre has excellent puncture protection under the tread and more importantly at the most vulnerable part – the sidewalls. Very sturdy tyre in terms of XC and marathons provides excellent protection on rocky terrain.

VECTRAN™ for
PUNCTURE BARRIER

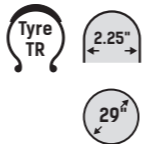
OIL SILICA
TREAD COMPOUND

TYRES	SIZE	WEIGHT	PRESSURE	TPI Count <small>Sidewall area / Under the tread</small>
XC11 TR 29"	29×2.25"	650 g	2-3.5 bar (30-50 p.s.i.)	210 / 375
XC11 TR 27.5"	27.5×2.25"	610 g	2-3.5 bar (30-50 p.s.i.)	210 / 375

» XC12 TR



Colours  



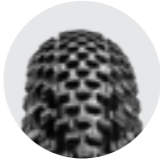
Tubeless ready tyre intended for XC and marathons. Thanks to the VECTRAN™ PUNCTURE BARRIER, the tyre has excellent puncture protection especially at the most vulnerable part – the sidewalls. The tread pattern is designed for speed and excellent cornering in mixed conditions except deep and sticky mud. Very good shock absorbance provided by this tyre makes this model ideal for using on the roots and bumpy terrain. True XC champion tyre. Design based on our highly appreciated MTB tubular tyres.

VECTRAN™ for
PUNCTURE BARRIER

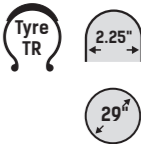
OIL SILICA
TREAD COMPOUND

TYRES	SIZE	WEIGHT	PRESSURE	TPI Count <small>Sidewall area / Under the tread</small>
XC12 TR 29"	29×2.25"	650 g	2-3.5 bar (30-50 p.s.i.)	210 / 375

» XC13 TR



Colours  



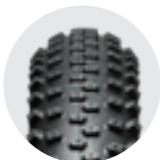
Tubeless ready MTB tyre intended for XC and marathons. Thanks to the VECTRAN™ PUNCTURE BARRIER, the tyre has excellent puncture protection at the most vulnerable part – the sidewalls. The tread pattern of the XC13 TR tyre provides low rolling resistance and good grip. Designed for speed and comfort. For dry conditions and not very demanding terrain. Tyre construction based on our highly appreciated MTB tubular tyres.

VECTRAN™ for
PUNCTURE BARRIER

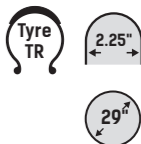
OIL SILICA
TREAD COMPOUND

TYRES	SIZE	WEIGHT	PRESSURE	TPI Count <small>Sidewall area / Under the tread</small>
XC13 TR 29"	29×2.25"	650 g	2-3.5 bar (30-50 p.s.i.)	210 / 375

» XC14 TR



Colours  



A TUBELESS READY TYRE INTENDED ESPECIALLY FOR XC RACES WITH MIXED TERRAIN CONDITIONS.

Thanks to the VECTRAN™ PUNCTURE BARRIER, the tyre has excellent puncture protection especially at the most vulnerable part – the sidewalls. A directional arrow-shaped tread pattern provides outstanding grip and fast cornering. Even wet roots and stones won't slow you down. A proven tyre at the World Cup.

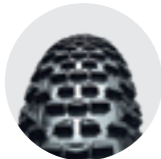
VECTRAN™ for
PUNCTURE BARRIER

OIL SILICA
TREAD COMPOUND

NEW

TYRES	SIZE	WEIGHT	PRESSURE	TPI Count <small>Sidewall area / Under the tread</small>
XC14 TR 29"	29×2.25"	650 g	2-3.5 bar (30-50 p.s.i.)	210 / 375

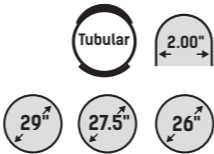
» XC2



Colours ■



TUBULARS	SIZE	WEIGHT	PRESSURE	TPI Count <small>Sidewall area / Under the tread</small>
XC2 29" PLUS	29×2.00"	515 g	max. 3 bar (45 p.s.i.)	210 / 375
XC2 29" PLUS SP	29×2.00"	545 g	max. 3 bar (45 p.s.i.)	210 / 375
XC2 27.5" PLUS	27.5×2.00"	480 g	max. 3 bar (45 p.s.i.)	210 / 375
XC2 27.5" PLUS SP	27.5×2.00"	510 g	max. 3 bar (45 p.s.i.)	210 / 375
XC2 26" PLUS	26×2.00"	465 g	max. 3 bar (45 p.s.i.)	210 / 375
XC2 26" PLUS SP	26×2.00"	495 g	max. 3 bar (45 p.s.i.)	210 / 375



Super high end racing model for cross country. Tubular construction and extremely low weight give your ride speed, acceleration, dynamics and lightness so far not experienced. Universal tread pattern for all types of terrain except very deep mud. Placement of the tread blocks provides for effective traction when climbing and accelerating.

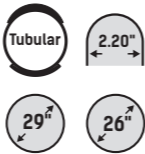
» XC4



Colours ■



TUBULARS	SIZE	WEIGHT	PRESSURE	TPI Count <small>Sidewall area / Under the tread</small>
XC4 29" SP	29×2.20"	610 g	max. 3 bar (45 p.s.i.)	210 / 375
XC4 26" SP	26×2.20"	560 g	max. 3 bar (45 p.s.i.)	210 / 375



Wider tubular with universal tread pattern for hard pack and rocky terrain. Very good shock absorption, sure ride and high puncture resistance even at very low pressures. This tubular makes "ride on the edge" possible. For cross country and marathon.

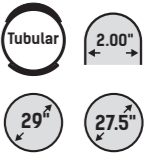
» XC5



Colours ■



TUBULARS	SIZE	WEIGHT	PRESSURE	TPI Count <small>Sidewall area / Under the tread</small>
XC5 29"	29×2.00"	595 g	max. 3 bar (45 p.s.i.)	120 / 180
XC5 27.5"	27.5×2.00"	560 g	max. 3 bar (45 p.s.i.)	120 / 180



This tubular is constructed for all types of terrain – especially for mud. Suitable for highly demanding and aggressive terrain. Unique self cleaning tread pattern ensures excellent traction, special side knobs provide for stable cornering. Coarse tread makes the ride confident, tubular has very good shock absorbency and high puncture resistance.

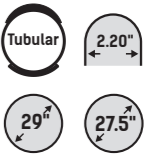
» XC6



Colours ■



TUBULARS	SIZE	WEIGHT	PRESSURE	TPI Count <small>Sidewall area / Under the tread</small>
XC6 29" SP	29×2.20"	610 g	max. 3 bar (45 p.s.i.)	210 / 375
XC6 27.5" SP	27.5×2.20"	580 g	max. 3 bar (45 p.s.i.)	210 / 375



Tubular tyre for dry and hard pack surfaces. Specially designed low profile knobs make the ride dynamic, fast and light at the same time. The knobs layout will perfectly holds you either on pavement or dirt and will not let you down while cornering. Advanced and technically skilled riders can use this tyre in rougher terrain conditions.



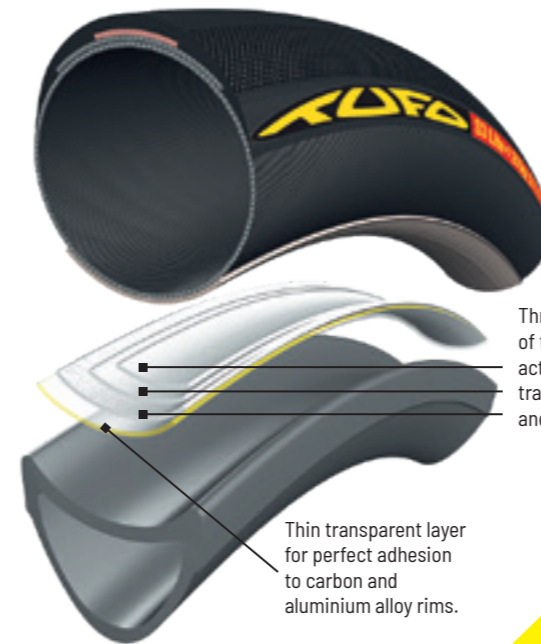
PETER SAGAN

A young Peter Sagan after winning a gold medal at the MTB World Championship in Val di Sole on Tufo's in 2008.

Peter Sagan získal na Tufo galuskách zlatou medaili na Mistrovství světa v horských kolech ve Val di Sole v roce 2008.

ACCESSORIES

We have developed special two sided tubular gluing tape for installing our tubulars on carbon or aluminium alloy rim. This tape is very different from all the similar products on the market. It has never been easier and faster to glue a tubular tyre. No waiting time for glue to dry, activated surface of the gluing tape facilitates perfect adhesion of a tubular to a rim after a few meters of riding. No messy glue on rims, tubulars or hands, no harmful vapors. Removable red backing strip makes centering of a tubular very easy.



Three stepped off layers of the gluing tape with active surface make perfect transition between the rim and tubular profiles.

Thin transparent layer for perfect adhesion to carbon and aluminium alloy rims.



TUFO TUBELESS RIM TAPE

25 mm × 9.4 m / for 2 wheels
25 mm × 66 m / for 14 wheels



TUBELESS VALVE SET

2 × tubeless valve 40 or 60mm
2 × replaceable square o-ring
1 × valve key



ALUMINUM ALLOY VALVE EXTENSIONS

For high profile rims. An advantage of this extension is given by its position between the valve body and the valve itself. Protruding from the rim is the valve, not the extension thus making inflation, tyre pressure adjustment or complete deflation very easy. As the extension is provided with an o ring seal, no self deflation is possible. Valve extension 21 / 28 / 31mm.



VALVE CORE

Replacement valve core with o-ring seal.



VALVE TOOL

For valve extensions (cut out).
For valve cores (opening).



Just

TUFO is putting all my bikes into the fastest and safest rubber imaginable :-). I would never switch!

TUFO obouvá má kola do rychla, bezpečna a nekonečna :-). Neměnil bych!

ACCESSORIES



FLAT TYRE PREVENTION SEALANT

Product for repair of flats of all TUFO tubulars. It can be used preventively when applied to the inside of the tyre before use.

When a flat occurs the sealant seals the puncture so the rider does not even detect getting a flat. It increases safety considerably, since fast loss of air does not occur and, consequently, rider's stability is not affected. Application through the valve stem.

ACCESSORIES: valve tool, 50 ml, for 1 to 3 repairs.



CARBON SEALANT

New highly effective product for instant repair of flats of all TUFO tubulars and TUFO tubeless ready tyres. It can be used after getting a flat ONLY. Application through the valve stem.

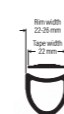
ACCESSORIES: valve tool, 50ml, for 1 to 2 repairs



TUBELESS READY SEALANT

New product for TUFO tubeless ready tyres installation and prevention of flats. It can be used with TUFO TR tyres ONLY.

ACCESSORIES: valve tool, 50ml, 220ml



GLUING TAPE 22mm FOR TUBULAR ROAD TYRES

For one tubular tyre.



GLUING TAPE 19mm FOR TUBULAR ROAD TYRES

For one tubular tyre.



GLUING TAPE 25mm FOR TUBULAR MTB TYRES

For tubular MTB tyres.

TUFO AROUND THE WORLD

We very much appreciate the hard work of all our active distributors across the globe. Most of them have been with us more than decade and already have become our friends. Without all these people Tufo hardly be riding AROUND THE WORLD.

THANK YOU!

Velmi si vážíme tvrdé práce všech našich aktivních distributorů po celém světě. Většina z nich je s námi více než desetiletí a již se stali našimi přáteli. Bez všech těchto lidí by Tufo stěžejí jezdilo NA VŠECH KONTINENTECH.

DĚKUJEME!



- | | | | | |
|----------------------------|-------------------------|-----------------------------------|---------------------------|--|
| 1 ARG SPORTS | 5 KAV Cycling | 9 Radsport TUFO Components | 13 Petal-Grass Art | 17 Positive Sports Solutions |
| 2 PROVISION CYCLING | 6 chimpancé | 10 APORERA | 14 TSA BELTRAMI | 18 TRI SPORTS |
| 3 D'Bike | 7 VELOX | 11 GS RIDE AHEAD | 15 POOLATO.BU | 19 LEGEND CYCLING |
| 4 CTME | 8 KCK CYCLOSPORT | 12 Radsport Hoffmann | 16 WOLFI'S | 20 Pro Cycling Imports Pty Ltd. |

AND MANY MORE ...

ACCESSORIES



TUFO CYCLING JERSEY

TOP Goffrato and Carbon X fabric
Made by Kalas



TUFO FLOOR PUMP

max. pressure 260 psi/18 bar



TUFO BACKPACK

10 Litres volume, 450 g



TUFO
U letiste 1857
765 02 Otrokovice
The Czech Republic
Tel.: +420 577 112 750
Fax: +420 577 112 760
E-mail: info@tufo.com
facebook.com/tufotyres

www.tufo.com