



TUFO CATALOGUE



CONTENTS

04	FOREWORD	12	PRODUCT RANGE
07	TECHNOLOGY	53	ACCESSORIES
09	TUBULAR AND TUBULAR CLINCHER DESCRIPTION	56	TUFO AROUND THE WORLD
11	CLINCHER TYRE AND TUBELESS READY TYRE DESCRIPTION		

FOREWORD

After 1989, free enterprise was allowed in our country. As a former cycling racer, I was very close to the tubulars and during 1990 I started thinking about the possibility of changing the design of the tubulars so that their useful properties could be improved. It happened on January 13, 1991, I made the first ugly but functional tubular tyre on a very primitive device. After a few modifications and the expansion of production equipment, which I placed in my garden house, I employed the first 5 employees. This was enough for us to sell the products first in the immediate vicinity and then in the whole of what was then Czechoslovakia. A year later, in 1992, we started exporting our tubulars to the USA. The American market was crucial for the real launch of the TUFO brand. From the very beginning, we paid special attention to the quality of our products, using strict checks of each manufactured piece and also by testing the tubulars in our own dynamic testing laboratory. In 1993, we could already afford to rent a larger production and office space in Otrokovice. We then expanded the range with the TUFO sealant, which we developed and the Tufo adhesive tape for gluing tubulars to the rim. In the same year, we launched and patented a world first in bicycle tyres, namely a tubular for a clincher rim – the so-called tubular clincher. In 1994, we managed to enter into the Australian and Japanese markets, and we gradually gained distributors in other Asian countries. We were still doing well in America and we were already able to cover all branches of cycling with our tubulars. We bought the leased premises in Otrokovice and in 1996 we started to build a new Tufo headquarters with production, storage and office space. In 2006, we were forced to further expand the production part of the building and that's how TUFO headquarters got its present appearance. In 2008, we invested in the purchase of an old production building in the original Baťa plant in Zlín and by 2011 we began to develop and produce bicycle tyres there. Gradually, we acquired production for mixing rubber compounds and set up a modern physical and mechanical laboratory. Because of our extensive research and product development, we were able to add tubeless ready tyres to our production in 2018. In 2022 we expanded and modernized the production of bicycle tyres. In the same year, thanks to EU co-funding, we succeed in reducing the building's energy consumption. For 2023 we have planned to renovate the staff sanitary facilities. All these investments will enable us to increase the necessary production capacity for bicycle tyres in the coming years.

PŘEDMLUVA

Po roce 1989 bylo v naší zemi umožněno svobodné podnikání. Jako bývalý cyklistický závodník jsem měl velmi blízko ke galuskám a v průběhu roku 1990 jsem začal uvažovat o možnosti změnit konstrukci galusek tak, aby byly zlepšeny jejich užité vlastnosti. Na velmi primitivním zařízení jsem vyrobil první nevzhlednou, ale funkční galusku. Stalo se tak dne 13.1.1991. Po úpravách a rozšíření výrobního zařízení, které jsem umístil do zahradního domku a kde posléze začalo pracovat prvních 5 spolupracovníků, nám tohle postačovalo k prodeji výrobků nejprve v nejbližším okolí a poté v celém tehdejší Československu. O rok později, v roce 1992, jsme již vyváželi naše galusky i do USA. Americký trh byl pro skutečný rozjezd značky TUFO zcela zásadní. Od samého počátku jsme věnovali mimořádnou pozornost kvalitě našich výrobků, jednak přísnou kontrolou každého vyrobeného kusu a také testováním galusek na vlastní dynamické zkušebně. V roce 1993 jsme si již mohli dovolit pronajmout větší výrobní a kancelářské prostory v Otrokovících. Sortiment jsme rozšířili o námi vyvinutý opravný prostředek TUFO tmel a o lepicí pásku Tufo na lepení galusky na ráfek. V téže roce jsme uvedli na trh a patentovali světovou novinku v obouvání kol a to galusku na plášťový klinčrový ráfek – tzv. plášťovku. V roce 1994 se nám podařilo dostat i na australský a japonský trh, postupně jsme získávali distributory i v dalších asijských zemích. V Americe se nám stále dobře dařilo a již jsme byli schopni pokrýt našimi galuskami a plášťovkami všechna odvětví cyklistiky. Pronajaté prostory jsme koupili a v roce 1996 jsme začali stavět nové sídlo TUFO s výrobními, skladovými a kancelářskými prostory. V roce 2006 jsme byli nuceni výrobní část budovy dále rozšířit a tak sídlo Tufo dostalo dnešní podobu. V roce 2008 investujeme do koupi staré výrobní budovy v původních Baťových závodech ve Zlíně, kde zahajujeme vývoj a výrobu veloplášťů v roce 2011. Postupně zde pořizujeme linky na míchání kaučukových směsí a zřizujeme moderní fyzikálně mechanickou laboratoř. To nám kromě rozsáhlého základního výzkumu a vývoje výrobků umožnilo v roce 2018 přidat do výroby bezdušové pláště. V roce 2022 rozšiřujeme a modernizujeme výrobu veloplášťů. V téže roce se nám díky spolufinancování Evropské unie daří snížit energetickou náročnost budovy. Pro rok 2023 máme naplánovanou opravu sociálního zázemí pro zaměstnance. Všechny tyto investice nám umožní zvýšit potřebnou kapacitu výroby veloplášťů do dalších let.



Founder of TUFO / Zakladatel firmy TUFO
Ing. MILOSLAV KLABAL



TUFO tyres and tubulars not only guarantee a perfect ride in races, but also in training.

"I really appreciate the connection with our team," says František Trkal, coach of the Dukla Praha junior road team.

Dokonalou jízdu nejen v závodech, ale i při trénincích, nám zaručují pláště a galusky od firmy TUFO. Moc si spojení s naším týmem vážím, říká trenér silničního týmu juniorů Dukly Praha František Trkal.

TECHNOLOGY

CARBON BLACK TREAD COMPOUND

A durable tread compound that has proven its quality for years. This standard compound with a high content of Carbon black guarantees very good mileage for road tubulars, durability and puncture resistance in certain cyclo-cross tubulars and low weight for selected track tubulars.

SPC SILICA TREAD COMPOUND

We use this high performance road racing tread compound in the majority of our road tubulars and road tyres. With 66 Shore A hardness this well-balanced blend of synthetic and natural rubbers with Activated Silica filler provides tubulars with excellent wet grip and low rolling resistance.

NAN SILICA TREAD COMPOUND

This is an indoor wooden track specific compound for extra speed, grip and quick handling. Not suitable for wet conditions.

OIL SILICA TREAD COMPOUND

A soft compound (55 Shore A) developed for MTB cross country and marathon tubulars. Adding a reasonable amount of oil to a polymer blend with Activated Silica improves traction and reduces rolling resistance. Reasonable tread wear.

BIC SILICA TREAD COMPOUND

A compound for indoor sports on wooden or plastic floors. Used in Cycle-ball, Artistic cycling and wheelchairs sports tubulars for excellent traction and quick handling. Manufactured in many colours including black, this compound doesn't leave any colour marks on floors. Not suitable for wet conditions.



A very light rubber/polyester composite antipuncture layer. This is used in Calibra tyres to enhance sidewall durability.

VECTRAN™ for PUNCTURE BARRIER

This most effective anti-puncture system is placed directly under the tread area. A core of the anti-puncture system is made from VECTRANTM – liquid crystal polymer (LCP) fibres which are five times stronger than steel. VECTRANTM offers also outstanding cut resistance and high impact resistance at a low weight – highly demanding properties for high-end bicycle tyres. VECTRANTM for PUNCTURE BARRIER not only provides the best possible puncture protection but also ensures cornering and stability.



A specially formulated slippery sidewall strip protects the most vulnerable part of certain MTB tubulars and road tyres. This special sidewall strip allows the tyre to slide off sharp edges without damaging the tyre carcass.

CRCA

CRCA (CARCASS RUBBER COMPOUND WITH LONG ARAMID FIBRES) is a special composite material, by means of which the high modulus long aramid fibres are introduced into the tyre carcass during the technological process.

CRCA increases the puncture resistance and total carcass strength.

CRCA improves riding comfort and decreases vibrations. In all models.





I have used TUFO tires since 2003 and personally I have to say that for me it's the best tire on the track. Tires are very light and it settles very well on many kind of surfaces! Couldn't be more happier with them !

TUFO používám od roku 2003 a osobně musím říci, že pro mě jsou to nejlepší pneumatiky na trati. Jsou velmi lehké a velmi dobře sedí na mnoha druzích povrchů! Nemůžu být spokojenější!

TUBULAR AND TUBULAR CLINCHER DESCRIPTION

The Construction of both types is essentially the same, consisting of closed tubular toroid. The difference is only in the installation of the tyre on the rim.

Tubular



- 1 The bead profile reinforcement of tubular clincher tyres provides easy tyre installation and prevents the tyre from unseating in extreme situations.
- 2 The bead profile itself copies the shape of the rim and after inflation provides a perfect joint between them. Also protects the rim lips from damage.
- 3 The base tape is made of cotton. It absorbs the glue evenly, resulting in optimal bond between the rim and the tyre.
- 4 Inside airtight layer is made of a special butyl-rubber compound. Very low air permeability of this layer means long intervals between tyre inflations. Solid bond between the airtight layer and the tyre carcass means lower rolling resistance.
- 5 The carcass consists of two layers of rubber cord composite with reverse bearing cord orientation in each layer, joined and strengthened with CRCA. The carcass TPI varies from 60 to 210 for different tyre models.
- 6 The carcass plies are overlapped and joined underneath the tread, creating increased TPI (threads per inch) value and better tyre puncture resistance.
- 7 Puncture proof ply – made of rubber cord composite strengthened with CRCA.
- 8 Protective rubber ply – located underneath the tread, indicates also tyre wear and higher possibility of punctures when showing through the tread (only in specified models).
- 9 Tread – produced either with rubber compound of activated silica, silica or carbon black (specified for each model).



Tubular Clincher



I have been using TUFO tyres for more than a year, I have them on all my bikes. From gravel to mountain bike. My favourite combination is an XC12 on the rear and an XC11 on the front. With the XC11 on the front I found the grip I need in the corners and the XC12 on the rear is fast as hell, a tyre that also has the capacity to absorb shock on a track that had a lot of roots is a plus. I'm very happy with the performance of the TUFO tyres that have allowed me to reach the podium in races.

TUFO používám už přes rok a mám je na všech svých kolech. Od gravelu po horské kolo. Moje oblíbená kombinace je XC12 vzadu a XC11 vpředu. XC11 vpředu má výbornou přilnavost, kterou potřebuji v zatáčkách a XC12 vzadu je velice rychlá, její plus je také to, že má schopnost absorbovat nárazy i na trati s velkým množstvím kořenů. Jsem velmi spokojený s výkonem pneumatik TUFO, které mi umožnily dosáhnout v závodech na stupně vítězů.

CLINCHER TYRE AND TUBELESS READY TYRE DESCRIPTION

Tubeless Ready Tyres have an airtight rubber compound incorporated directly into the tyre carcass which holds the air pressure whereas conventional Clincher Tyres use a separate inner tube. Our Tyres have a Vectran Puncture Barrier to increase puncture resistance.

Clincher Tyre



1 Separate inner tube

2 VECTRAN™ for PUNCTURE BARRIER Under the tread protection

3 Tread – produced with rubber compound of activated silica

4 Protective rubber ply – located underneath the tread, indicates also tyre wear and higher possibility of punctures when showing through the tread (only in specified models).

5 The carcass plies are overlapped and joined underneath the tread, creating increased TPI (threads per inch) value and better tyre puncture resistance.

6 The carcass consists of two layers of rubber cord composite with reverse bearing cord orientation in each layer, joined and strengthened with CRCA.

7 Bead protection

8 Foldable aramid beads

9 Airtight rubber compound



Tubeless Ready Tyre

PRODUCT RANGE

/CLINCHER TYRES
/TUBELESS READY TYRES
/TUBULARS
/TUBULAR CLINCHERS



14

ROAD
CYCLING



36

WHEELCHAIR
SPORTS



26

TRIATHLON



28

TRACK
CYCLING



38

ASTRISTIC CYCLING
CYCLE-BALL



40

GRAVEL



32

CYCLO
-CROSS



44

MTB





MATYÁŠ KOBLÍŽEK
European Junior Championships:
Madison European Champion
European Elimination Champion
World Junior Championship:
Madison 2.place
Elimination 2x 3.place

ROAD CYCLING

MATERIALS & TECHNOLOGY

CARBON BLACK
TREAD COMPOUND

SPC SILICA
TREAD COMPOUND

CRCA

PUNCTURE
PROOF PLY

PROTECTIVE
RUBBER PLY

VECTRAN™ for
PUNCTURE BARRIER

SIDE
SKIN
PROTECTION

SP

ARAMID BEADS
FOLDABLE

CLINCHER TYRES	Size	Weight	Pressure	TPI Count Sidewall area / Under the tread	Colours
CALIBRA PLUS 25	25-622 700×25C	210 g	6-9 bar (90-130 p.s.i.)	120 / 240	
CALIBRA PLUS 28	28-622 700×28C	235 g	6-8 bar (90-115 p.s.i.)	120 / 240	
COMTURA DUO 25	25-622 700×25C	225 g	6-9 bar (90-130 p.s.i.)	120 / 240	
COMTURA DUO 28	28-622 700×28C	250 g	6-8 bar (90-115 p.s.i.)	120 / 240	
COMTURA AERO 25	25-622 700×25C	215 g	6-9 bar (90-130 p.s.i.)	120 / 240	
COMTURA AERO 28	28-622 700×28C	240 g	6-8 bar (90-115 p.s.i.)	120 / 240	

TUBELESS READY TYRES	Size	Weight	Pressure	TPI Count Sidewall area / Under the tread	Colours
COMTURA PRIMA 25	25-622 700×25C	220 g	4-6.5 bar (60-95 p.s.i.)	210 / 375	
COMTURA PRIMA 28	28-622 700×28C	240 g	3.4 - 6.5 bar (45-95 p.s.i.)	210 / 375	
COMTURA PRIMA 30	30-622 700×30C	260 g	2.5-5.5 bar (35-80 p.s.i.)	210 / 375	
COMTURA 4 TR 25	25-622 700×25C	260 g	5-7 bar (75-100 p.s.i.)	210 / 375	
COMTURA 4 TR 28	28-622 700×28C	280 g	4-6 bar (60-90 p.s.i.)	210 / 375	
COMTURA 4 TR 30	30-622 700×30C	300 g	2.5-5.5 bar (35-80 p.s.i.)	210 / 375	
COMTURA 5 TR 25	25-622 700×25C	280 g	5-7 bar (75-100 p.s.i.)	210 / 375	
COMTURA 5 TR 28	28-622 700×28C	300 g	4-6 bar (60-90 p.s.i.)	210 / 375	

TUBULARS	Size	Weight	Pressure	TPI Count Sidewall area / Under the tread	Colours
S33 PRO	28" 21 mm	260 g	8-12 bar (115-175 p.s.i.)	60 / 90	
S33 PRO 24	28" 24 mm	310 g	6-8 bar (90-115 p.s.i.)	60 / 90	
HI-COMPOSITE CARBON	28" 23 mm	260 g	8-12 bar (115-175 p.s.i.)	120 / 240	
HI-COMPOSITE CARBON 25	28" 25 mm	300 g	6-8 bar (90-115 p.s.i.)	120 / 240	
HI-COMPOSITE CARBON 28	28" 28 mm	320 g	5-8 bar (70-115 p.s.i.)	120 / 240	
ELITE RIDE	28" 23 mm	250 g	8-15 bar (115-220 p.s.i.)	210 / 375	
ELITE RIDE 25	28" 25 mm	290 g	6-10 bar (90-145 p.s.i.)	210 / 375	
ELITE JET <160 g	28" 20 mm	<160 g	10-15 bar (145-220 p.s.i.)	210 / 375	
ELITE S3 <225 g	28" 23 mm	<225 g	8-15 bar (115-220 p.s.i.)	210 / 375	
ELITE S3 25 <265 g	28" 25 mm	<265 g	6-10 bar (90-145 p.s.i.)	210 / 375	

TUBULAR CLINCHERS	Size	Weight	Pressure	TPI Count Sidewall area / Under the tread	Colours
C S33 PRO	28" 21 mm	335 g	8-12 bar (115-175 p.s.i.)	60 / 90	
C S33 PRO 24	28" 24 mm	385 g	6-8 bar (90-115 p.s.i.)	60 / 90	
C ELITE RIDE	28" 23 mm	315 g	8-15 bar (115-220 p.s.i.)	210 / 375	
C ELITE RIDE 25	28" 25 mm	355 g	6-10 bar (90-145 p.s.i.)	210 / 375	
C HI-COMPOSITE CARBON	28" 23 mm	335 g	8-12 bar (115-175 p.s.i.)	120 / 240	
C HI-COMPOSITE CARBON 25	28" 25 mm	375 g	6-8 bar (90-115 p.s.i.)	120 / 240	

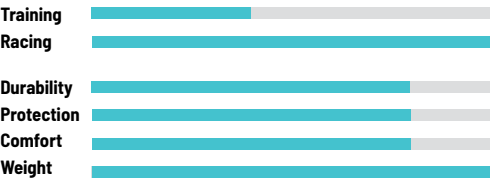
Due to the use of natural materials, the tyre weight can fluctuate ±5 %. For tyres with the weight specified on the tyre label, this weight is guaranteed as the highest. We reserve the right to carry out changes.

» COMTURA PRIMA



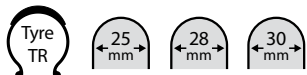
Tubeless ready road tyre for best the performance. Hookless compatible.

The new COMTURA PRIMA TR is an extension of our range of road tubeless tyres. We have developed completely new compounds for this model. The tread compound provides an excellent grip in all conditions, especially in wet weather. Hard to find competition in wet weather. Thanks to additional compounds, this tyre is able to achieve low rolling resistance and weight. The COMTURA PRIMA TR is the ideal choice for racing and performance cycling.



TUBELESS READY TYRES	SIZE	WEIGHT	PRESSURE	TPI Count <small>Sidewall area / Under the tread</small>
NEW COMTURA PRIMA 25	25-622 700×25C	220 g	4-6.5 bar (60-95 p.s.i.)	210 / 375
NEW COMTURA PRIMA 28	28-622 700×28C	240 g	3 - 6.5 bar (45-95 p.s.i.)	210 / 375
NEW COMTURA PRIMA 30	30-622 700×30C	260 g	2.5 - 5.5 bar (35-80 p.s.i.)	210 / 375

» COMTURA 4 TR



Tubeless ready road tyre for those who cannot be bothered with inner tubes anymore. Hookless compatible.

Comtura 4 TR is protected very well against flats by VECTRAN™ for PUNCTURE BARRIER under the tread area. Great ride comfort and excellent mileage provided by this tyre should be a holy grail for each tubeless fan.



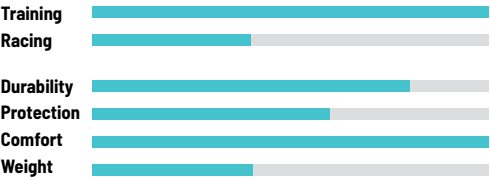
TUBELESS READY TYRES	SIZE	WEIGHT	PRESSURE	TPI Count <small>Sidewall area / Under the tread</small>
COMTURA 4 TR 25	25-622 700×25C	260 g	5-7 bar (75-100 p.s.i.)	210 / 375
COMTURA 4 TR 28	28-622 700×28C	280 g	4-6 bar (60-90 p.s.i.)	210 / 375
NEW COMTURA 4 TR 30	30-622 700×30C	300 g	2.5-5.5 bar (30-80 p.s.i.)	210 / 375

» COMTURA 5 TR



Tubeless ready road tyre for those who cannot be bothered with inner tubes anymore. Hookless compatible.

Comtura 5 TR was designed to provide tubeless fans with very reliable tyre, reasonable milage and good price. Although this model is our entry level tubeless tyre it is definitely pleasure to ride this tyre.

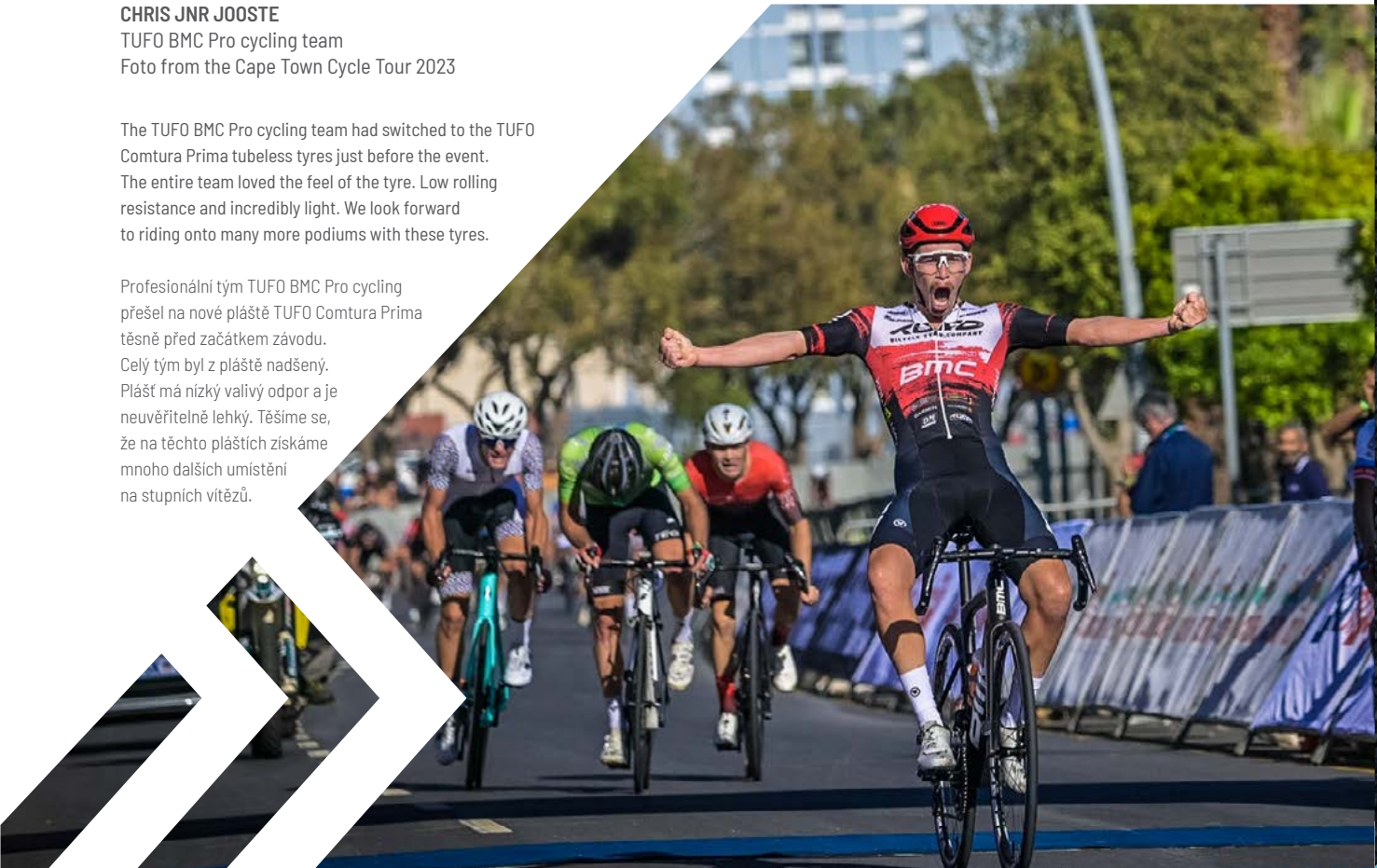


TUBELESS READY TYRES	SIZE	WEIGHT	PRESSURE	TPI Count <small>Sidewall area / Under the tread</small>
COMTURA 5 TR 25	25-622 700×25C	280 g	5-7 bar (75-100 p.s.i.)	210 / 375
COMTURA 5 TR 28	28-622 700×28C	300 g	4-6 bar (60-90 p.s.i.)	210 / 375

CHRIS JNR JOOSTE
TUFO BMC Pro cycling team
Foto from the Cape Town Cycle Tour 2023

The TUFO BMC Pro cycling team had switched to the TUFO Comtura Prima tubeless tyres just before the event. The entire team loved the feel of the tyre. Low rolling resistance and incredibly light. We look forward to riding onto many more podiums with these tyres.

Profesionální tým TUFO BMC Pro cycling přešel na nové pláště TUFO Comtura Prima těsně před začátkem závodu. Celý tým byl z pláště nadšený. Plášť má nízký valivý odpor a je neuvěřitelně lehký. Těšíme se, že na těchto pláštích získáme mnoho dalších umístění na stupních vítězů.



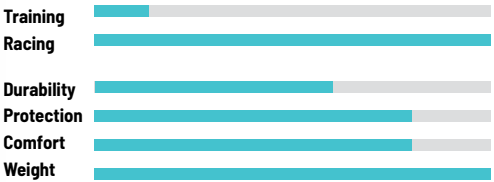
» CALIBRA PLUS



Colours ■

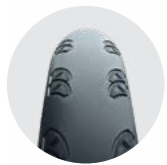


A very lightweight road racing clincher tyre. Slick tread centre with side grip pattern for extra speed and excellent riding properties on wet or dry pavement. Good puncture resistance.



CLINCHER TYRES	SIZE	WEIGHT	PRESSURE	TPI Count <small>Sidewall area / Under the tread</small>
CALIBRA PLUS 25	25-622 700×25C	210 g	6-9 bar (90-130 p.s.i.)	120 / 240
CALIBRA PLUS 28	28-622 700×28C	235 g	6-8 bar (90-115 p.s.i.)	120 / 240

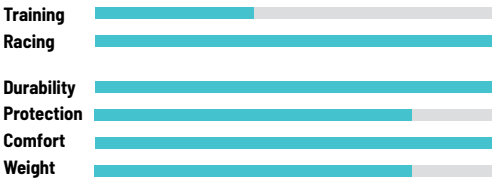
» COMTURA DUO



Colours ■ ■ ■ ■

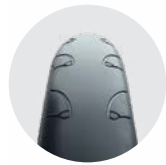
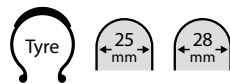


The most universal clincher tyre model in the Comtura line. Comtura Duo is a racing performance tyre with excellent puncture resistance over additional mileage. Performs wherever, whenever to your highest expectations. VECTRAN™ for PUNCTURE BARRIER under the tyre tread not only provides the best possible puncture protection but also ensures cornering and stability.



CLINCHER TYRES	SIZE	WEIGHT	PRESSURE	TPI Count <small>Sidewall area / Under the tread</small>
COMTURA DUO 25	25-622 700×25C	225 g	6-9 bar (90-130 p.s.i.)	120 / 240
COMTURA DUO 28	28-622 700×28C	250 g	6-8 bar (90-115 p.s.i.)	120 / 240

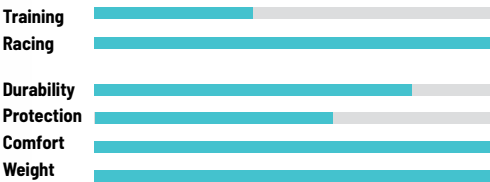
» COMTURA AERO



Colours ■

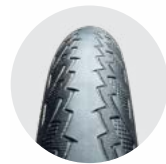
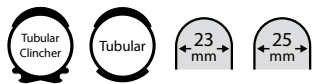


The lightest and fastest clincher tyre model in the Comtura line. Besides being one of the lightest tyres on the market, it still offers great mileage and great puncture protection. Comtura Aero is a racing performance tyre with amazing reliability. VECTRAN™ for PUNCTURE BARRIER under the tyre tread not only provides the best possible puncture protection but also ensures cornering and stability.



CLINCHER TYRES	SIZE	WEIGHT	PRESSURE	TPI Count <small>Sidewall area / Under the tread</small>
COMTURA AERO 25	25-622 700×25C	215 g	6-9 bar (90-130 p.s.i.)	120 / 240
COMTURA AERO 28	28-622 700×28C	240 g	6-8 bar (90-115 p.s.i.)	120 / 240

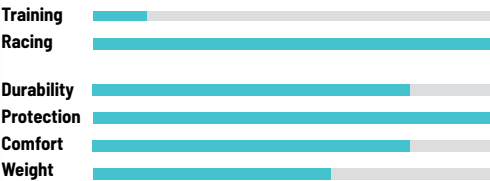
» ELITE RIDE



Colours ■ ■ ■ ■

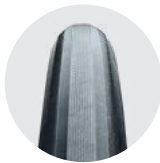


This tubular tyre model provides comfortable, smooth and fast ride with minimum of vibrations even in the most demanding conditions of road cycling. Wide tyre tread overlapping the sidewall and the puncture proof ply in the middle of the tread effectively decrease the possibility of flats.



TUBULARS	SIZE	WEIGHT	PRESSURE	TPI Count <small>Sidewall area / Under the tread</small>
ELITE RIDE	28" 23 mm	250 g	8-15 bar (115-220 p.s.i.)	210 / 375
ELITE RIDE 25	28" 25 mm	290 g	6-10 bar (90-145 p.s.i.)	210 / 375
TUBULAR CLINCHERS				
C ELITE RIDE	28" 23 mm	315 g	8-15 bar (115-220 p.s.i.)	210 / 375
C ELITE RIDE 25	28" 25 mm	355 g	6-10 bar (90-145 p.s.i.)	210 / 375

» S33 PRO



Colours



**CARBON BLACK
TREAD COMPOUND**



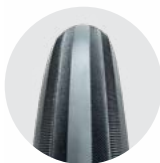
Very popular training tyre for all around use with higher inflation pressure.



TUBULARS	SIZE	WEIGHT	PRESSURE	TPI Count <small>Sidewall area / Under the tread</small>
S33 PRO	28" 21mm	260 g	8-12 bar (115-175 p.s.i.)	60 / 90
S33 PRO 24	28" 24 mm	310 g	6-8 bar (90-115 p.s.i.)	60 / 90
TUBULAR CLINCHERS				
C S33 PRO	28" 21mm	335 g	8-12 bar (115-175 p.s.i.)	60 / 90
C S33 PRO 24	28" 24 mm	385 g	6-8 bar (90-115 p.s.i.)	60 / 90

Rim size 28" 700 C E.T.R.T.O. 622-(13-15) mm

» HI-COMPOSITE CARBON

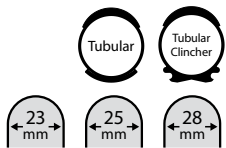


Colours

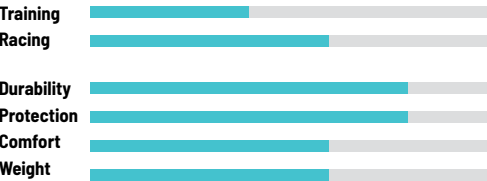


**PUNCTURE
PROOF PLY**

**SPC SILICA
TREAD COMPOUND**



Application of composite puncture proof ply and high composite carbon tread compound made possible to use thinner tread and still maintain high mileage. Thinner tread also lowers rolling resistance while the tyre is maintaining ideal shock absorption properties and high puncture resistance.



TUBULARS	SIZE	WEIGHT	PRESSURE	TPI Count <small>Sidewall area / Under the tread</small>
HI-COMPOSITE CARBON	28" 23 mm	260 g	8-12 bar (115-175 p.s.i.)	120 / 240
HI-COMPOSITE CARBON 25	28" 25 mm	300 g	6-8 bar (90-115 p.s.i.)	120 / 240
HI-COMPOSITE CARBON 28	28" 28 mm	320 g	5-8 bar (70-115 p.s.i.)	120 / 240
TUBULAR CLINCHERS				
C HI-COMPOSITE CARBON	28" 23 mm	335 g	8-12 bar (115-175 p.s.i.)	120 / 240
C HI-COMPOSITE CARBON 25	28" 25 mm	375 g	6-8 bar (90-115 p.s.i.)	120 / 240

Rim size 28" 700 C E.T.R.T.O. 622-(13-15) mm

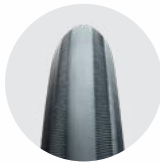


ŠIMON MATĚJEK
TJ Favorit Brno

Winner of the international race
Grand Prix West Bohemia, category U17.

Vítěz po samostatném úniku mezinárodního
závodu Grand Prix West Bohemia, kategorie U17.

» ELITE JET



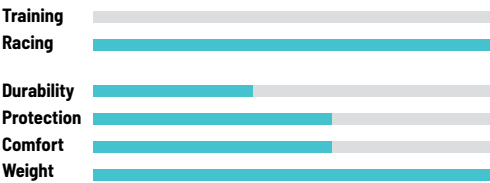
Colours



VECTRAN™ for PUNCTURE BARRIER
PROTECTIVE RUBBER PLY
SPC SILICA TREAD COMPOUND



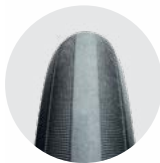
Guaranteed specified weight. Intended for time trials and road races with good surface. In spite of super low weight, this tyre has reasonable puncture resistance and mileage. Possibility of very high inflation pressure, resulting in absolute minimum rolling resistance. VECTRAN™ for PUNCTURE BARRIER under the tyre tread not only provides the best possible puncture protection but also ensures cornering and stability.



TUBULARS	SIZE	WEIGHT	PRESSURE	TPI Count <small>Sidewall area / Under the tread</small>
ELITE JET <160 g	28" 20 mm	<160 g	10–15 bar (145–220 p.s.i.)	210 / 375

*For tyres with weight specified on the tyre label, this weight is guaranteed as the highest.

» ELITE S3



Colours



VECTRAN™ for PUNCTURE BARRIER
PROTECTIVE RUBBER PLY
SPC SILICA TREAD COMPOUND



Guaranteed specified weight. In spite of low weight, this tyre has very good puncture resistance and mileage. Elite S3 <225 g is an enhanced successor of the Tufo's best-seller S3 Lite <215 g. In addition to improved tread pattern, it has a new carcass with higher 210/375 TPI count and wider base tape. The result is a supple ride and excellent handling. VECTRAN™ for PUNCTURE BARRIER under the tyre tread not only provides the best possible puncture protection but also ensures cornering and stability.



TUBULARS	SIZE	WEIGHT	PRESSURE	TPI Count <small>Sidewall area / Under the tread</small>
ELITE S3 <225 g	28" 23 mm	<225 g	8–15 bar (115–220 p.s.i.)	210 / 375
ELITE S3 25 <265 g	28" 25 mm	<265 g	6–10 bar (90–145 p.s.i.)	210 / 375

*For tyres with weight specified on the tyre label, this weight is guaranteed as the highest.



JAN VONEŠ

Multiple Champion of the Czech Republic.

Elite Czech athlete currently fighting for a qualification place at the Olympic Games in Paris.

Elitní český atlet aktuálně bojuje o kvalifikaci na olympijské hry v Paříži.



PETR VABROUŠEK
2 × World Cup Winner in long distance Triathlon (2006 a 2011)
81 × TOP 10 in IRONMAN WTC races (world record)
21 × TOP 10 in CHALLENGE races (world record)
15 × in series professional participation in Hawaii
52 × wins in Ironman races
13 × National Champion in long distance Triathlon
227 × finished Ironman races
Winner of HimalayanXtri (2023)
Winner of Marathon and 100 km ultra in Antarctica in record times (2013)
Winner of North Pole Marathon 2015
Participated on Marathon Des Sables 2016 (21st place)
Winner of Ultraman Florida 2018 and Ultra 515 Czech (2019, 2020)
World record holder Ultraman distance: 20:56
3rd place Ultraman World Championships Hawaii 2018
2 × second place at World Marathon Challenge (2017, 2019)

MATERIALS & TECHNOLOGY



TUBULARS	Size	Weight	Pressure	TPI Count Sidewall area / Under the tread	Colours
ELITE PULSE	28" 22 mm	230 g	8-15 bar (115-220 p.s.i.)	210 / 375	■
ELITE PULSE 25	28" 25 mm	280 g	6-10 bar (90-145 p.s.i.)	210 / 375	■
S3 26" LITE <200 g	26" 21 mm	<200 g	8-15 bar (115-220 p.s.i.)	120 / 240	■
S3 LITE <215 g	28" 21 mm	<215 g	8-15 bar (115-220 p.s.i.)	120 / 240	■

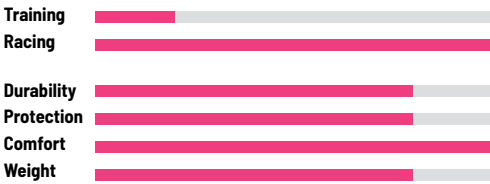
» ELITE PULSE



The top of the line model for wide range of uses. Featuring ideal round tread profile and smooth tread-sidewall transition, this model has minimal aerodynamic head-on resistance. Fine tread pattern together with specially formulated tread compound provide excellent adhesion on wet or dry pavement and low rolling resistance.



Colours ■



TUBULARS	SIZE	WEIGHT	PRESSURE	TPI Count Sidewall area / Under the tread
ELITE PULSE	28" 22 mm	230 g	8-15 bar (115-220 p.s.i.)	210 / 375
ELITE PULSE 25	28" 25 mm	280 g	6-10 bar (90-145 p.s.i.)	210 / 375

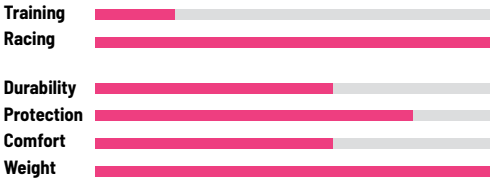
» S3 LITE



Guaranteed specified weight. For use on smooth pavement. Narrow tyre profile minimizes head on aerodynamic resistance. High inflation pressure decreases the rolling resistance significantly.



Colours ■



TUBULARS	SIZE	WEIGHT	PRESSURE	TPI Count Sidewall area / Under the tread
S3 26" LITE <200 g	26" 21 mm	<200 g	8-15 bar (115-220 p.s.i.)	120 / 240
S3 LITE <215 g	28" 21 mm	<215 g	8-15 bar (115-220 p.s.i.)	120 / 240

*For tyres with weight specified on the tyre label, this weight is guaranteed as the highest.



WOJCIECH PSZCZOLARSKI
3x European Champion in the points race
3rd place World Championship points race
3rd place European Championship Madison

MATERIALS & TECHNOLOGY

CARBON BLACK
TREAD COMPOUND

CRCA

PROTECTIVE
RUBBER PLY

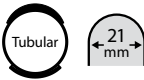
NAN SILICA
TREAD COMPOUND

TRACK
CYCLING

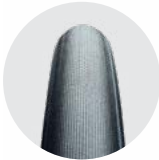
TUBULARS	Size	Weight	Pressure	TPI Count <small>Sidewall area / Under the tread</small>	Colours
S3 PRO	28" 21mm	195 g	8-15 bar (115-220 p.s.i.)	60 / 90	■ ■
ELITE <125 g	28" 19 mm	<125 g	10-15 bar (145-220 p.s.i.)	210 / 315	■
ELITE <135 g	28" 22 mm	<135 g	10-15 bar (145-220 p.s.i.)	210 / 315	■
ELITE <150 g	28" 19 mm	<150 g	10-15 bar (145-220 p.s.i.)	210 / 315	■
ELITE <160 g	28" 22 mm	<160 g	10-15 bar (145-220 p.s.i.)	210 / 315	■
NEW TRACK PULSE	28" 22 mm	130 g	10-15 bar (145-220 p.s.i.)	400 / 600	■

Due to the use of natural materials, the tyre weight can fluctuate ±5 %. For tyres with the weight specified on the tyre label, this weight is guaranteed as the highest. We reserve the right to carry out changes.

» S3 PRO



Ideal track training tyre. High inflation pressures, excellent traction on all types of surfaces and good mileage.



Colours ■ ■

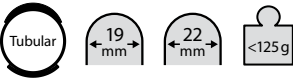


CARBON BLACK
TREAD COMPOUND

TUBULARS	SIZE	WEIGHT	PRESSURE	TPI Count <small>Sidewall area / Under the tread</small>
S3 PRO	28" 21mm	195 g	8-15 bar (115-220 p.s.i.)	60 / 90



» ELITE



Guaranteed specified weight. Excellent traction on all track surfaces. Sufficient mileage for intensive racing. Suitable for all track disciplines.



Colours ■



ELITE <125 g, ELITE <135 g

CARBON BLACK
TREAD COMPOUND

ELITE <150 g, ELITE <160 g

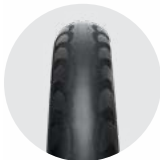
NAN SILICA
TREAD COMPOUND

TUBULARS	SIZE	WEIGHT	PRESSURE	TPI Count <small>Sidewall area / Under the tread</small>
ELITE <125 g	28" 19 mm	<125 g	10-15 bar (145-220 p.s.i.)	210 / 315
ELITE <135 g	28" 22 mm	<135 g	10-15 bar (145-220 p.s.i.)	210 / 315
ELITE <150 g	28" 19 mm	<150 g	10-15 bar (145-220 p.s.i.)	210 / 315
ELITE <160 g	28" 22 mm	<160 g	10-15 bar (145-220 p.s.i.)	210 / 315



*For tyres with weight specified on the tyre label, this weight is guaranteed as the highest.

» TRACK PULSE



Colours

NEW



CRCA

PROTECTIVE
RUBBER PLY

NAN SILICA
TREAD COMPOUND



22
mm

For our new track tubular, we have used a high TPI carcass (200 TPI) for the first time. We have achieved very low rolling resistance by combining this cord with the new compound. The tread compound was developed primarily for good adhesion and low rolling resistance. Tubular is designed exclusively for racing purposes due to its high inflation and excellent performance. Designed for dry surfaces only!

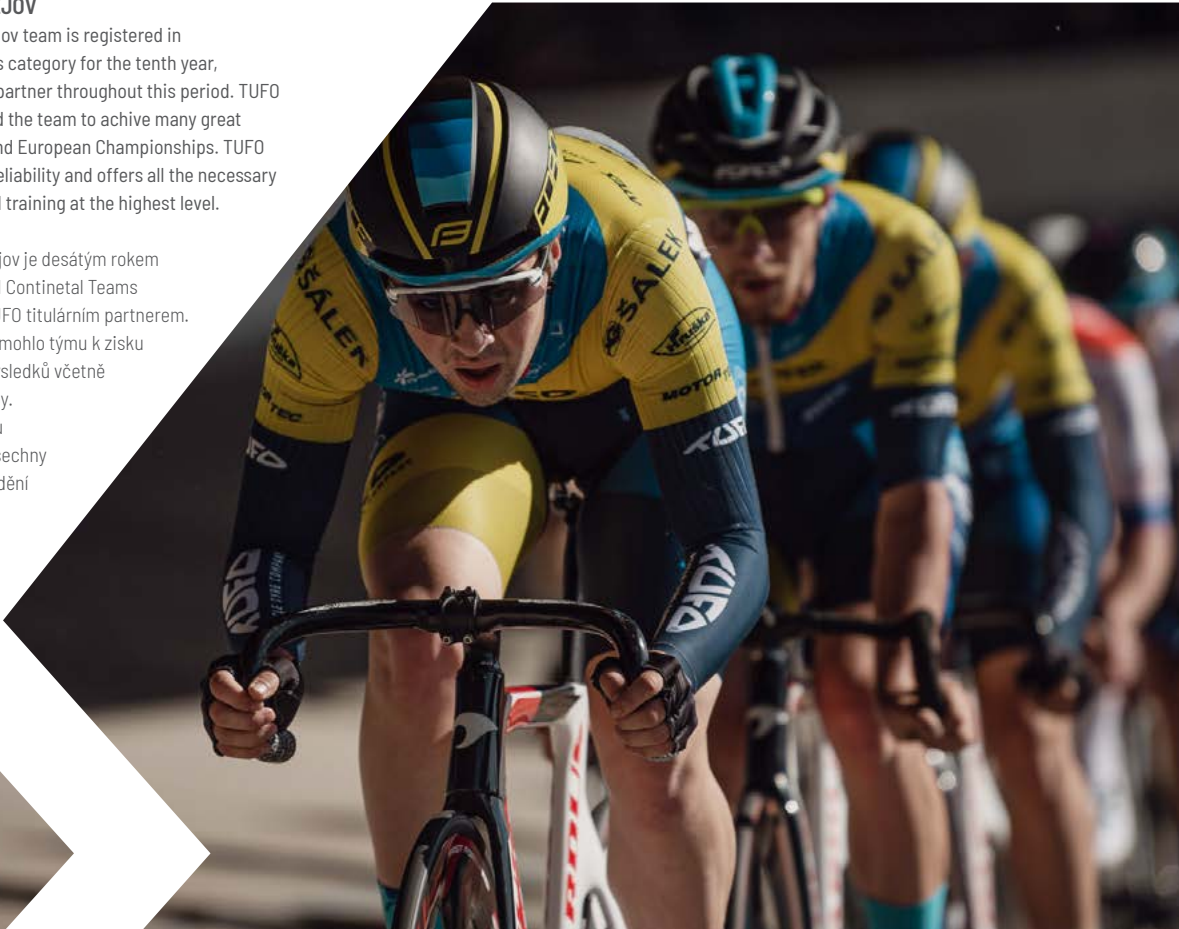
Training
Racing

TUBULARS	SIZE	WEIGHT	PRESSURE	TPI Count <small>Sidewall area / Under the tread</small>
NEW TRACK PULSE	28" 22 mm	130 g	10-15 bar (145-220 p.s.i.)	400 / 600

TUFO PARDUS PROSTĚJOV

The TUFO PARDUS Prostějov team is registered in the UCI Continental Teams category for the tenth year, TUFO has been their title partner throughout this period. TUFO branded tyres have helped the team to achieve many great results, including World and European Championships. TUFO is characterised by high reliability and offers all the necessary parameters for racing and training at the highest level.

Tým TUFO PARDUS Prostějov je desátým rokem registrován v kategorii UCI Continental Teams a po celé toto období je TUFO titulárním partnerem. Obutí se značkou TUFO pomohlo týmu k získu velkého počtu skvělých výsledků včetně titulů mistrů světa a Evropy. TUFO se vyznačují vysokou spolehlivostí a poskytují všechny nutné parametry pro závodění a trénink na špičkové úrovni.





CYCLO-CROSS

MATERIALS & TECHNOLOGY

CARBON BLACK
TREAD COMPOUND

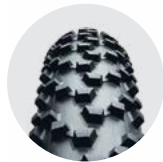
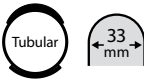
OIL SILICA
TREAD COMPOUND

CRCA

TUBULARS	Size	Weight	Pressure	TPI Count <small>Sidewall area / Under the tread</small>	Colours
CUBUS 33 SG	28" 33 mm	400 g	max. 4.5 bar (65 p.s.i.)	60 / 90	■
FLEXUS CUBUS 33 SG	28" 33 mm	350 g	max. 3 bar (45 p.s.i.)	210 / 315	■
PRIMUS 33 SG	28" 33 mm	400 g	max. 4.5 bar (65 p.s.i.)	60 / 90	■
FLEXUS PRIMUS 33 SG	28" 33 mm	350 g	max. 3 bar (45 p.s.i.)	210 / 315	■
DRY PLUS	28" 32 mm	370 g	max. 4.5 bar (65 p.s.i.)	60 / 90	■
FLEXUS DRY PLUS	28" 32 mm	340 g	max. 4.5 bar (65 p.s.i.)	210 / 315	■

Due to the use of natural materials, the tyre weight can fluctuate ±5 %. For tyres with the weight specified on the tyre label, this weight is guaranteed as the highest. We reserve the right to carry out changes.

» CUBUS SG



Colours ■



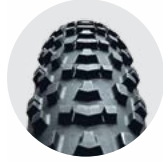
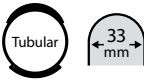
CUBUS 33 SG
CARBON BLACK
TREAD COMPOUND

FLEXUS CUBUS 33 SG
OIL SILICA
TREAD COMPOUND

TUBULARS	SIZE	WEIGHT	PRESSURE	TPI Count <small>Sidewall area / Under the tread</small>
CUBUS 33 SG	28" 33 mm	400 g	max. 4.5 bar (65 p.s.i.)	60 / 90
FLEXUS CUBUS 33 SG	28" 33 mm	350 g	max. 3 bar (45 p.s.i.)	210 / 315

Flexus Cubus 33 SG is the universal model suitable for most conditions including the most difficult cyclocross terrains. In spite of the aggressive tread pattern, this model has very low rolling resistance and can be used also on dry terrain and hard pack. Specially formulated soft tread compound enhances the tyre shock absorption.

» PRIMUS SG



Colours ■



PRIMUS 33 SG
CARBON BLACK
TREAD COMPOUND

FLEXUS PRIMUS 33 SG
OIL SILICA
TREAD COMPOUND

TUBULARS	SIZE	WEIGHT	PRESSURE	TPI Count <small>Sidewall area / Under the tread</small>
PRIMUS 33 SG	28" 33 mm	400 g	max. 4.5 bar (65 p.s.i.)	60 / 90
FLEXUS PRIMUS 33 SG	28" 33 mm	350 g	max. 3 bar (45 p.s.i.)	210 / 315

Flexus Primus 33 SG is the top of the line model suitable for most conditions except deep mud. Unique new self cleaning tread pattern ensures excellent traction, special side knobs provide for stable cornering. Specially formulated soft tread compound enhances the tyre shock absorption.

» DRY PLUS



Flexus Dry Plus is model suitable specially for dry and sandy, also for snow and frozen terrain. Fine tread pattern with special side knobs make the ride light, with sure handling in corners. Specially formulated soft tread compound enhances the tyre shock absorption. Extremely low weight, high TPI count, good resistance against flats.

TUBULARS	SIZE	WEIGHT	PRESSURE	TPI Count <small>Sidewall area / Under the tread</small>
DRY PLUS	28" 32 mm	370 g	max. 4.5 bar (65 p.s.i.)	60 / 90
FLEXUS DRY PLUS	28" 32 mm	340 g	max. 4.5 bar (65 p.s.i.)	210 / 315

MARTIN BINA

Junior World Champion, World Cup winner, multiple Czech Cup winner and Czech National Champion.

Juniorský mistr světa, vítěz Světového poháru, několikanásobný vítěz Českého poháru a mistr České republiky.





LEO PEKKA TAHTI
The world's fastest wheelchair
racer, record holder in 100 m event.

Nejrychlejší závodník na invalidním
vozíku na světě, držitel rekordu na 100 m.

MATERIALS & TECHNOLOGY

CARBON BLACK
TREAD COMPOUND

SPC SILICA
TREAD COMPOUND

BIC SILICA
TREAD COMPOUND

CRCA

PUNCTURE
PROOF PLY

PROTECTIVE
RUBBER PLY

WHEELCHAIR SPORTS

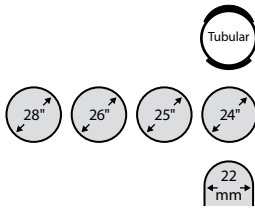
TUBULARS	Size	Weight	Pressure	TPI Count Sidewall area / Under the tread	Colours
MS3 28"	28" 22 mm	330 g	12-16 bar (175-230 p.s.i.)	60 / 120	■
MS3 26"	26" 22 mm	315 g	12-16 bar (175-230 p.s.i.)	60 / 120	■
MS3 25"	25" 22 mm	315 g	12-16 bar (175-230 p.s.i.)	60 / 120	■
MS3 24"	24" 22 mm	300 g	12-16 bar (175-230 p.s.i.)	60 / 120	■
S3 20" LITE <100 g	20" 18 mm	<100 g	10-15 bar (145-220 p.s.i.)	210 / 315	■
S3 26" ROAD	26" 26 mm	230 g	8-15 bar (115-220 p.s.i.)	210 / 375	■
S3 24" ROAD	24" 26 mm	220 g	8-15 bar (115-220 p.s.i.)	210 / 375	■
S3 22" ROAD	22" 26 mm	210 g	8-15 bar (115-220 p.s.i.)	210 / 375	■
S3 20" ROAD	20" 26 mm	200 g	8-15 bar (115-220 p.s.i.)	210 / 375	■

Due to the use of natural materials, the tyre weight can fluctuate ±5 %. For tyres with the weight specified on the tyre label, this weight is guaranteed as the highest.
We reserve the right to carry out changes.

» MS3



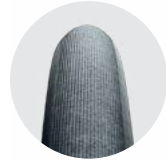
Colours ■



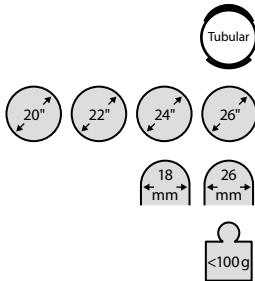
Tubular tyre for clincher rim of specific dimensions. The tyre has specially constructed sidewall and after inflation it holds against the rim lips and will not slip on the rim. The tyre sits mostly inside of the rim, protecting it from a side impact damage. No need to glue on the rim.

TUBULARS	SIZE	WEIGHT	PRESSURE	TPI Count Sidewall area / Under the tread
MS3 28"	28" 22 mm	330 g	12-16 bar (175-230 p.s.i.)	60 / 120
Rim size 28" E.T.R.T.O. 622x21 mm				
MS3 26"	26" 22 mm	315 g	12-16 bar (175-230 p.s.i.)	60 / 120
Rim size 26" E.T.R.T.O. 590x21 mm				
MS3 25"	25" 22 mm	315 g	12-16 bar (175-230 p.s.i.)	60 / 120
Rim size 25" E.T.R.T.O. 559x21 mm				
MS3 24"	24" 22 mm	300 g	12-16 bar (175-230 p.s.i.)	60 / 120
Rim size 24" E.T.R.T.O. 540x21 mm				

» S3



Colours ■



Guaranteed specified weight for LITE model - intended for a front wheel of racing wheelchairs. ROAD models are for wheelchairs and kick scooters.

S3 20" LITE <100 g				
CARBON BLACK TREAD COMPOUND				
S3 ROAD				
PUNCTURE PROOF PLY				
PROTECTIVE RUBBER PLY				
SPC SILICA TREAD COMPOUND				
TUBULARS	SIZE	WEIGHT	PRESSURE	TPI Count Sidewall area / Under the tread
S3 20" LITE <100 g	20" 18 mm	<100 g	10-15 bar (145-220 p.s.i.)	210 / 315
S3 26" ROAD	26" 26 mm	230 g	8-15 bar (115-220 p.s.i.)	210 / 375
S3 24" ROAD	24" 26 mm	220 g	8-15 bar (115-220 p.s.i.)	210 / 375
S3 22" ROAD	22" 26 mm	210 g	8-15 bar (115-220 p.s.i.)	210 / 375
S3 20" ROAD	20" 26 mm	200 g	8-15 bar (115-220 p.s.i.)	210 / 375



JÁCHYM BAXA
A TADEÁŠ ČERVÍK
Champions of Czech republic
in Cycle-Ball (2023)

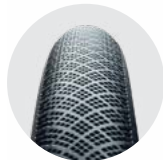
MATERIALS & TECHNOLOGY



ARTISTIC
CYCLING
CYCLE-BALL

TUBULARS	Size	Weight	Pressure	TPI Count <small>Sidewall area / Under the tread</small>	Colours
ARTISTIC CYCLING 26×1	26×1"	260 g	8-16 bar (115-230 p.s.i.)	210 / 315	■
ARTISTIC CYCLING 26×1 ^{1/8}	26×1 ^{1/8} "	300 g	8-16 bar (115-230 p.s.i.)	210 / 315	■
B3 26×1"	26×1"	350 g	8-16 bar (115-230 p.s.i.)	60 / 120	■ ■ ■ ■ ■
B3 24×1"	24×1"	320 g	8-16 bar (115-230 p.s.i.)	60 / 120	■ ■ ■ ■ ■
B3 22×1"	22×1"	290 g	8-16 bar (115-230 p.s.i.)	60 / 120	■ ■ ■ ■ ■
B3 20×1"	20×1"	260 g	8-16 bar (115-230 p.s.i.)	60 / 120	■ ■ ■ ■ ■
B33 26×1 ^{1/8}	26×1 ^{1/8} "	430 g	8-16 bar (115-230 p.s.i.)	60 / 120	■ ■ ■ ■ ■

» ARTISTIC CYCLING



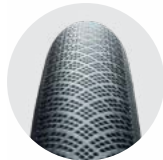
Colours ■



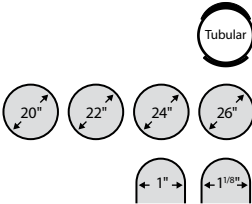
Specially developed tubular model for artistic cycling. The bicycle is very easy and smoothly to maneuver due to the round tread profile. The optimal tread compound provides excellent adhesion on all types of surfaces. This tubular will help you to master the most difficult exercises.

TUBULARS	SIZE	WEIGHT	PRESSURE	TPI Count <small>Sidewall area / Under the tread</small>
ARTISTIC CYCLING 26×1	26×1"	260 g	8-16 bar (115-230 p.s.i.)	210 / 315
ARTISTIC CYCLING 26×1 ^{1/8}	26×1 ^{1/8} "	300 g	8-16 bar (115-230 p.s.i.)	210 / 315

» B



Colours ■ ■ ■ ■ ■



Optimally dimensioned tread compound together with ideal tread pattern guarantee excellent adhesion on all types of surfaces. Matter of course is long tubular life and exceptional riding properties. Thanks to a special textile protection of the sidewall and reinforcement of the tread part, these tubulars are exceptionally resistant to punctures and damages. Proven Cycle-Ball champion.

TUBULARS	SIZE	WEIGHT	PRESSURE	TPI Count <small>Sidewall area / Under the tread</small>
B3 26×1"	26×1"	350 g	8-16 bar (115-230 p.s.i.)	60 / 120
B3 24×1"	24×1"	320 g	8-16 bar (115-230 p.s.i.)	60 / 120
B3 22×1"	22×1"	290 g	8-16 bar (115-230 p.s.i.)	60 / 120
B3 20×1"	20×1"	260 g	8-16 bar (115-230 p.s.i.)	60 / 120
B33 26×1 ^{1/8}	26×1 ^{1/8} "	430 g	8-16 bar (115-230 p.s.i.)	60 / 120

*These models are with original tread pattern - not pictured here.



JIRÍ PAFKA
TUFO Sales Manager

I have a passion for all kinds of sports. I never miss an opportunity to get on a bike. A gravel bike is the ideal choice for me. It is the perfect option for a combination of roads, bike paths and forest trails.

Mám vášeň pro všechny druhy sportů. Nevynechám příležitost sednout na kolo. Gravel kolo je pro mě perfektní možnost. Je ideální variantou pro kombinaci silnic, cyklostezek a lesních cest.

MATERIALS & TECHNOLOGY



GRAVEL

TUBELESS READY TYRES	Size	Weight	Pressure	TPI Count Sidewall area / Under the tread	Colours
GRAVEL THUNDERO	36-622 (700x36C)	390 g	2-5 bar (30-70 p.s.i.)	210 / 375	
GRAVEL THUNDERO	40-622 (700x40C)	430 g	2-5 bar (30-70 p.s.i.)	210 / 375	
GRAVEL THUNDERO	44-622 (700x44C)	450 g	1.7-4 bar (24.7-58 p.s.i.)	210 / 375	
NEW GRAVEL THUNDERO	48-622 (700x48C)	470 g	1.4-3.2 bar (20-45 p.s.i.)	210 / 375	
GRAVEL SPEEDERO	36-622 (700x36C)	390 g	2-5 bar (30-70 p.s.i.)	210 / 375	
GRAVEL SPEEDERO	40-622 (700x40C)	430 g	2-5 bar (30-70 p.s.i.)	210 / 375	
GRAVEL SPEEDERO	44-622 (700x44C)	450 g	1.7-4 bar (24.7-58 p.s.i.)	210 / 375	
GRAVEL SWAMPERO	36-622 (700x36C)	390 g	2-5 bar (30-70 p.s.i.)	210 / 375	
GRAVEL SWAMPERO	40-622 (700x40C)	430 g	2-5 bar (30-70 p.s.i.)	210 / 375	
GRAVEL SWAMPERO	44-622 (700x44C)	450 g	1.7-4 bar (24.7-58 p.s.i.)	210 / 375	
NEW GRAVEL THUNDERO HD	40-622 (700x40C)	460 g	2-5 bar (30-70 p.s.i.)	130 / 255	
NEW GRAVEL SPEEDERO HD	40-622 (700x40C)	460 g	2-5 bar (30-70 p.s.i.)	130 / 255	
NEW GRAVEL SWAMPERO HD	40-622 (700x40C)	460 g	2-5 bar (30-70 p.s.i.)	130 / 255	

» GRAVEL THUNDERO



A UNIVERSAL TREAD PATTERN FOR THOSE WHO DON'T WANT TO THINK ABOUT WHERE TO GO. HOOKLESS COMPATIBLE.

The tubeless ready Thundero can do it all. The middle part of the tread, composed of tightly packed cubes, creates speed and surprisingly quiet rolling with three indented rows of knobs on the outer tread, which bite literally into any surface. This provides excellent grip even on unpaved surfaces and allows you to turn sharply. The wide tread and the durable flexible Jubena layer covering the sidewalls protect the tyre from receiving damage from stones. A Puncture proof ply under the tread minimizes the risk of punctures and contributes to the overall reliability of the tyre. The high TPI casing construction, together with the soft tread compound, smoothes out any surface and prevents the tyre from bouncing on uneven surfaces. The Thundero is also made to be long lasting and guarantees high mileage.

TUBELESS READY TYRES	SIZE	WEIGHT	PRESSURE	TPI Count Sidewall area / Under the tread
GRAVEL THUNDERO	36-622 (700x36C)	390 g	2-5 bar (30-70 p.s.i.)	210/375
GRAVEL THUNDERO	40-622 (700x40C)	430 g	2-5 bar (30-70 p.s.i.)	210/375
GRAVEL THUNDERO	44-622 (700x44C)	450 g	1.7-4 bar (24.7-58 p.s.i.)	210/375
NEW GRAVEL THUNDERO	48-622 (700x48C)	470 g	1.4-3.2 bar (20-45 p.s.i.)	210/375

» GRAVEL THUNDERO HD



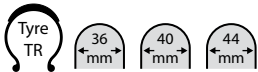
A UNIVERSAL TREAD PATTERN FOR THOSE WHO DON'T WANT TO THINK ABOUT WHERE TO GO. HOOKLESS COMPATIBLE.

The tubeless ready Thundero can do it all. The middle part of the tread, composed of tightly packed cubes, creates speed and surprisingly quiet rolling with three indented rows of knobs on the outer tread, which bite literally into any surface. This provides excellent grip even on unpaved surfaces and allows you to turn sharply. The wide tread and the durable flexible Jubena layer covering the sidewalls protect the tyre from receiving damage from stones. A Puncture proof ply under the tread minimizes the risk of punctures and contributes to the overall reliability of the tyre. The Thundero is also made to be long lasting and guarantees high mileage.

This HD version extends the existing gravel range with focus on higher loads and operating pressures. Modified construction with stronger warp threads achieves higher durability with only a 30 grams weight increase.

TUBELESS READY TYRES	SIZE	WEIGHT	PRESSURE	TPI Count Sidewall area / Under the tread
NEW GRAVEL THUNDERO HD	40-622 (700x40C)	460 g	2-5 bar (30-70 p.s.i.)	130/255

» GRAVEL SWAMPERO



Colours



THE PERFECT TUBELESS READY TYRE FOR THE MOST CHALLENGING CONDITIONS. NO NEED TO WORRY ABOUT THE WEATHER. HOOKLESS COMPATIBLE.

A directional arrow-shaped tread pattern with overlapping central knobs guarantees fast rolling, exceptional grip and self-cleaning properties. The wide tread and the durable flexible Jubena layer covering the sidewalls protect the tyre from receiving damage from stones. A Puncture proof ply under the tread minimizes the risk of punctures and contributes to the overall reliability of the tyre. The high TPI casing construction, together with the soft tread compound, smoothes out any surface and prevents the tyre from bouncing on uneven surfaces. The Swampero is also made to be long lasting and guarantees high mileage.

TUBELESS READY TYRES	SIZE	WEIGHT	PRESSURE	TPI Count <small>Sidewall area / Under the tread</small>
GRAVEL SWAMPERO	36-622 (700x36C)	390 g	2-5 bar (30-70 p.s.i.)	210/375
GRAVEL SWAMPERO	40-622 (700x40C)	430 g	2-5 bar (30-70 p.s.i.)	210/375
GRAVEL SWAMPERO	44-622 (700x44C)	450 g	1.7-4 bar (24.7-58 p.s.i.)	210/375

» GRAVEL SWAMPERO HD



Colours



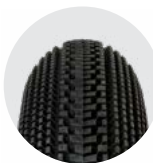
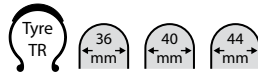
THE PERFECT TUBELESS READY TYRE FOR THE MOST CHALLENGING CONDITIONS. NO NEED TO WORRY ABOUT THE WEATHER. HOOKLESS COMPATIBLE.

A directional arrow-shaped tread pattern with overlapping central knobs guarantees fast rolling, exceptional grip and self-cleaning properties. The wide tread and the durable flexible Jubena layer covering the sidewalls protect the tyre from receiving damage from stones. A Puncture proof ply under the tread minimizes the risk of punctures and contributes to the overall reliability of the tyre. The Swampero is also made to be long lasting and guarantees high mileage.

This HD version extends the existing gravel range with focus on higher loads and operating pressures. Modified construction with stronger warp threads achieves higher durability with only a 30 grams weight increase.

TUBELESS READY TYRES	SIZE	WEIGHT	PRESSURE	TPI Count <small>Sidewall area / Under the tread</small>
NEW GRAVEL SWAMPERO HD	40-622 (700x40C)	460 g	2-5 bar (30-70 p.s.i.)	130/255

» GRAVEL SPEEDERO



Colours

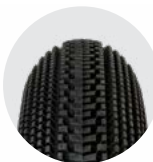


MADE FOR SPEED. IT DOESN'T MATTER IF YOU RIDE ON ASPHALT, COBBLES, FOREST PATHS, SAND, GRASS OR GRAVEL. TUBELESS READY. HOOKLESS COMPATIBLE.

The tubeless ready Speedero always provides uncompromising acceleration and ease of riding with plenty of grip and cornering safety. The wide tread and the durable flexible Jubena layer covering the sidewalls, protect the tyre from receiving damage from stones. A Puncture proof ply under the tread minimizes the risk of punctures and contributes to the overall reliability of the tyre. The high TPI casing construction, together with the soft tread compound, smoothes out any surface and prevents the tyre from bouncing on uneven surfaces. The Speedero is also made to be long lasting and guarantees high mileage.

TUBELESS READY TYRES	SIZE	WEIGHT	PRESSURE	TPI Count <small>Sidewall area / Under the tread</small>
GRAVEL SPEEDERO	36-622 (700x36C)	390 g	2-5 bar (30-70 p.s.i.)	210/375
GRAVEL SPEEDERO	40-622 (700x40C)	430 g	2-5 bar (30-70 p.s.i.)	210/375
GRAVEL SPEEDERO	44-622 (700x44C)	450 g	1.7-4 bar (24.7-58 p.s.i.)	210/375

» GRAVEL SPEEDERO HD



Colours



MADE FOR SPEED. IT DOESN'T MATTER IF YOU RIDE ON ASPHALT, COBBLES, FOREST PATHS, SAND, GRASS OR GRAVEL. TUBELESS READY, HOOKLESS COMPATIBLE.

The tubeless ready Speedero always provides uncompromising acceleration and ease of riding with plenty of grip and cornering safety. The wide tread and the durable flexible Jubena layer covering the sidewalls, protect the tyre from receiving damage from stones. A Puncture proof ply under the tread minimizes the risk of punctures and contributes to the overall reliability of the tyre. The Speedero is also made to be long lasting and guarantees high mileage.

This HD version extends the existing gravel range with focus on higher loads and operating pressures. Modified construction with stronger warp threads achieves higher durability with only a 30 grams weight increase.

TUBELESS READY TYRES	SIZE	WEIGHT	PRESSURE	TPI Count <small>Sidewall area / Under the tread</small>
NEW GRAVEL SPEEDERO HD	40-622 (700x40C)	460 g	2-5 bar (30-70 p.s.i.)	130/255



Paprstka

TOMÁŠ PAPRSTKA


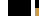



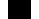




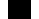



Junior World Champion in cyclocross Tabor 2010.
Successful also in MTB, he won several
medals at the Czech national championships.

Juniorský mistr světa v cyklokrosu
z roku 2010 v Táboře. Úspěšný i v MTB,
získal několik medailí na mistrovství ČR.

MTB



MTB

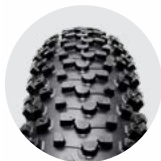
TUBELESS READY TYRES	Size	Weight	Pressure	TPI Count <small>Sidewall area / Under the tread</small>	Colours
XC11 TR 29"	29×2.25"	650 g	2-3.5 bar (30-50 p.s.i.)	210 / 375	
XC12 TR 29"	29×2.25"	650 g	2-3.5 bar (30-50 p.s.i.)	210 / 375	
XC13 TR 29"	29×2.25"	650 g	2-3.5 bar (30-50 p.s.i.)	210 / 375	
XC14 TR 29"	29×2.25"	650 g	2-3.5 bar (30-50 p.s.i.)	210 / 375	
TUBULARS	Size	Weight	Pressure	TPI Count <small>Sidewall area / Under the tread</small>	Colours
XC2 29" PLUS	29×2.00"	515 g	max. 3 bar (45 p.s.i.)	210 / 375	
XC2 29" PLUS SP	29×2.00"	545 g	max. 3 bar (45 p.s.i.)	210 / 375	
XC2 27.5" PLUS	27.5×2.00"	480 g	max. 3 bar (45 p.s.i.)	210 / 375	
XC2 27.5" PLUS SP	27.5×2.00"	510 g	max. 3 bar (45 p.s.i.)	210 / 375	
XC2 26" PLUS	26×2.00"	465 g	max. 3 bar (45 p.s.i.)	210 / 375	
XC2 26" PLUS SP	26×2.00"	495 g	max. 3 bar (45 p.s.i.)	210 / 375	
XC4 29" SP	29×2.20"	610 g	max. 3 bar (45 p.s.i.)	210 / 375	
XC4 26" SP	26×2.20"	560 g	max. 3 bar (45 p.s.i.)	210 / 375	
XC5 29"	29×2.00"	595 g	max. 3 bar (45 p.s.i.)	120 / 180	
XC5 27.5"	27.5×2.00"	560 g	max. 3 bar (45 p.s.i.)	120 / 180	
XC6 29" SP	29×2.20"	610 g	max. 3 bar (45 p.s.i.)	210 / 375	
XC6 27.5" SP	27.5×2.20"	580 g	max. 3 bar (45 p.s.i.)	210 / 375	

Due to the use of natural materials, the tyre weight can fluctuate ±5 %. For tyres with the weight specified on the tyre label, this weight is guaranteed as the highest. We reserve the right to carry out changes.

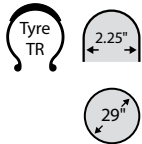
MATERIALS & TECHNOLOGY



» XC11 TR



Colours 



Tubeless ready all purpose MTB tyre intended for XC and marathons. The tread pattern of the XC11 TR tyre provides low rolling resistance, self cleaning and good grip. Hookless compatible.

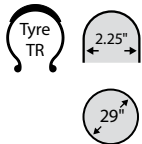


TUBELESS READY TYRES	SIZE	WEIGHT	PRESSURE	TPI Count <small>Sidewall area / Under the tread</small>
XC11 TR 29"	29x2.25"	650 g	2-3.5 bar (30-50 p.s.i.)	210 / 375

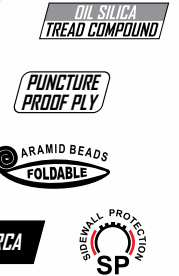
» XC12 TR



Colours 

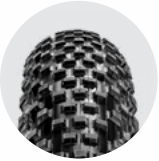


Tubeless ready tyre intended for XC and marathons. The tread pattern is designed for speed and excellent cornering in mixed conditions except deep and sticky mud. Very good shock absorbance provided by this tyre makes this model ideal for using on the roots and bumpy terrain. True XC champion tyre. Design based on our highly appreciated MTB tubular tyres. Hookless compatible.

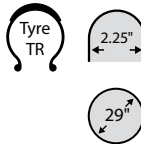


TUBELESS READY TYRES	SIZE	WEIGHT	PRESSURE	TPI Count <small>Sidewall area / Under the tread</small>
XC12 TR 29"	29x2.25"	650 g	2-3.5 bar (30-50 p.s.i.)	210 / 375

» XC13 TR



Colours 

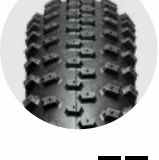


Tubeless ready MTB tyre intended for XC and marathons. The tread pattern of the XC13 TR tyre provides low rolling resistance and good grip. Designed for speed and comfort. For dry conditions and not very demanding terrain. Tyre construction based on our highly appreciated MTB tubular tyres. Hookless compatible.

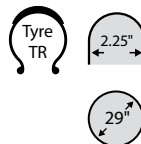


TUBELESS READY TYRES	SIZE	WEIGHT	PRESSURE	TPI Count <small>Sidewall area / Under the tread</small>
XC13 TR 29"	29x2.25"	650 g	2-3.5 bar (30-50 p.s.i.)	210 / 375

» XC14 TR



Colours 

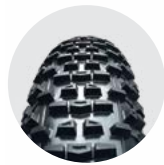


A tubeless ready tyre intended especially for XC races with mixed terrain conditions. A directional arrow-shaped tread pattern provides outstanding grip and fast cornering. Even wet roots and stones won't slow you down. A proven tyre at the World Cup. Hookless compatible.

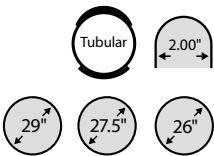


TUBELESS READY TYRES	SIZE	WEIGHT	PRESSURE	TPI Count <small>Sidewall area / Under the tread</small>
XC14 TR 29"	29x2.25"	650 g	2-3.5 bar (30-50 p.s.i.)	210 / 375

» XC2



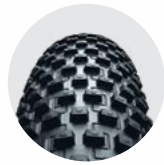
Colours ■



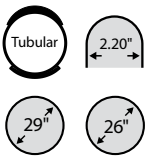
Super high end racing model for cross country. Tubular construction and extremely low weight give your ride speed, acceleration, dynamics and lightness so far not experienced. Universal tread pattern for all types of terrain except very deep mud. Placement of the tread blocks provides for effective traction when climbing and accelerating.

TUBULARS	SIZE	WEIGHT	PRESSURE	TPI Count <small>Sidewall area / Under the tread</small>
XC2 29" PLUS	29×2.00"	515 g	max. 3 bar (45 p.s.i.)	210 / 375
XC2 29" PLUS SP	29×2.00"	545 g	max. 3 bar (45 p.s.i.)	210 / 375
XC2 27.5" PLUS	27.5×2.00"	480 g	max. 3 bar (45 p.s.i.)	210 / 375
XC2 27.5" PLUS SP	27.5×2.00"	510 g	max. 3 bar (45 p.s.i.)	210 / 375
XC2 26" PLUS	26×2.00"	465 g	max. 3 bar (45 p.s.i.)	210 / 375
XC2 26" PLUS SP	26×2.00"	495 g	max. 3 bar (45 p.s.i.)	210 / 375

» XC4



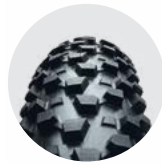
Colours ■



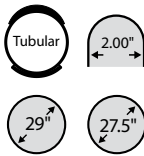
Wider tubular with universal tread pattern for hard pack and rocky terrain. Very good shock absorption, sure ride and high puncture resistance even at very low pressures. This tubular makes "ride on the edge" possible. For cross country and marathon.

SIZE	WEIGHT	PRESSURE	TPI Count <small>Sidewall area / Under the tread</small>
29×2.20"	610 g	max. 3 bar (45 p.s.i.)	210 / 375
26×2.20"	560 g	max. 3 bar (45 p.s.i.)	210 / 375

» XC5



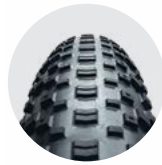
Colours ■



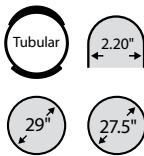
This tubular is constructed for all types of terrain – especially for mud. Suitable for highly demanding and aggressive terrain. Unique self cleaning tread pattern ensures excellent traction, special side knobs provide for stable cornering. Coarse tread makes the ride confident, tubular has very good shock absorbercy and high puncture resistance.

TUBULARS	SIZE	WEIGHT	PRESSURE	TPI Count <small>Sidewall area / Under the tread</small>
XC5 29"	29×2.00"	595 g	max. 3 bar (45 p.s.i.)	120 / 180
XC5 27.5"	27.5×2.00"	560 g	max. 3 bar (45 p.s.i.)	120 / 180

» XC6



Colours ■



Tubular tyre for dry and hard pack surfaces. Specially designed low profile knobs make the ride dynamic, fast and light at the same time. The knobs layout will perfectly holds you either on pavement or dirt and will not let you down while cornering. Advanced and technically skilled riders can use this tyre in rougher terrain conditions.

TUBULARS	SIZE	WEIGHT	PRESSURE	TPI Count <small>Sidewall area / Under the tread</small>
XC6 29" SP	29×2.20"	610 g	max. 3 bar (45 p.s.i.)	210 / 375
XC6 27.5" SP	27.5×2.20"	580 g	max. 3 bar (45 p.s.i.)	210 / 375



Sagan

A young Peter Sagan after winning a gold medal at the MTB World Championship in Val di Sole on TUFO's in 2008.

Peter Sagan získal na TUFO galuskách zlatou medailu na Mistrovství světa v horských kolech ve Val di Sole v roce 2008.

ACCESSORIES

We have developed special two sided tubular gluing tape for installing our tubulars on carbon or aluminium alloy rim. This tape is very different from all the similar products on the market. It has never been easier and faster to glue a tubular tyre. No waiting time for glue to dry, activated surface of the gluing tape facilitates perfect adhesion of a tubular to a rim after a few meters of riding. No messy glue on rims, tubulars or hands, no harmful vapors. Removable red backing strip makes centering of a tubular very easy.



Three stepped off layers of the gluing tape with active surface make perfect transition between the rim and tubular profiles.

Thin transparent layer for perfect adhesion to carbon and aluminium alloy rims.



TUFO TUBELESS RIM TAPE

25 mm × 9.4 m
25 mm × 66 m



TUBELESS VALVE SET

2 × tubeless valve 40 or 60mm, 2 × replaceable square o-ring
1 × valve key, 2x valve core, 2x valve cap



VALVE CORE

Replacement valve core with o-ring seal.



VALVE TOOL

For valve extensions (cut out).
For valve cores (opening).



ALUMINUM ALLOY VALVE EXTENSIONS

For high profile rims. An advantage of this extension is given by its position between the valve body and the valve itself. Protruding from the rim is the valve, not the extension thus making inflation, tyre pressure adjustment or complete deflation very easy.
As the extension is provided with an o ring seal, no self deflation is possible. Valve extension 21 / 28 / 31mm.





DANIEL POLMAN

I have relied on TUFO tyres and tubulars for 11 years. I set the current Czech record for 24-hour riding on the Elite Ride 23 tubulars (911.68 km). I have completed many successful races with TUFO MTB XC11 and XC12 tyres including, for example, winning the 400 Ultra race twice.

O pláště a galusky TUFO se nejen v zatáčkách opírám už 11 let. Na galuskách Elite Ride 23 jsem zajel dosavadní český rekord v jízdě na 24 hodin (911,68 km). Mnoho úspěšných závodů jsem zajel i s TUFO MTB pláští XC11 a XC12. Vyhral jsem na nich například již dvakrát závod 400 Ultra.

ACCESSORIES



FLAT TYRE PREVENTION SEALANT

Product for repair of flats of all TUFO tubulars. It can be used preventively when applied to the inside of the tyre before use.

When a flat occurs the sealant seals the puncture so the rider does not even detect getting a flat. It increases safety considerably, since fast loss of air does not occur and, consequently, rider's stability is not affected. Application through the valve stem.

ACCESSORIES: valve tool, 50 ml, for 1 to 3 repairs.



CARBON SEALANT

Proven highly effective product for instant repair of flats of all TUFO tubulars and TUFO tubeless ready tyres. It can be used after getting a flat ONLY. Application through the valve stem.

ACCESSORIES: valve tool, 50ml, for 1 to 2 repairs



TUBELESS READY SEALANT

Our product for TUFO tubeless ready tyres installation and prevention of flats. Tufo Tubeless Ready Sealant has been developed especially for TUFO tubeless ready tyres. Tubeless Ready Sealant can also be used for other brands of tyres.

ACCESSORIES: valve tool, 50ml, 220ml, 1 liter **NEW**



GLUING TAPE 22mm FOR TUBULAR ROAD TYRES

For one tubular tyre.



GLUING TAPE 19mm FOR TUBULAR ROAD TYRES

For one tubular tyre.



GLUING TAPE 25mm FOR TUBULAR MTB TYRES

For tubular MTB tyre.

TUFO AROUND THE WORLD

We very much appreciate the hard work of all our active distributors across the globe. Most of them have been with us more than decade and already have become our friends. Without all these people TUFO hardly be riding AROUND THE WORLD.

THANK YOU!

Velmi si vážime tvrdé práce všech našich aktivních distributorů po celém světě. Většina z nich je s námi více než desetiletí a již se stali našimi přáteli. Bez všech těchto lidí by TUFO stěží jezdilo NA VŠECH KONTINENTECH.

DĚKUJEME!



1 **ARG sports**

2 **VELO STAR**

3 **D'Bike**

4 **CYCLING PRO**

5 **K&V Cycling**

6 **chimpancé SRL**

7 **VELOX**

8 **KCK CYKLOSPORT**

9 **Rodsport Components**

10 **POREBA**

11 **GS RIDE AHEAD**

12 **sgrafit**

13 **Petaj-Szabó Kft.**

14 **TSA BELTRAMI**

15 **PODILATO.EU**

16 **WOLFI'S**

17 **Positive SPORTS SOLUTIONS**

18 **TRI SPORTS**

19 **LEGEND CYCLING**

20 **Pro Cycling Imports Pty Ltd.**

AND MANY MORE ...

ACCESSORIES



TUFO BACKPACK
10 Litres volume, 450 g



TUFO FLOOR PUMP

Max. pressure 260 psi/18 bar.

Built-in air tank for easy tubeless tyres set up.



TUFO COTTON CAP

Digital catalogue here:



TUFO
U letiste 1857
765 02 Otrokovice
The Czech Republic

Tel.: +420 577 112 750
Fax: +420 577 112 760
E-mail: info@tufo.com
facebook.com/tufotyres

www.tufo.com